

## **INTRODUCTION TO SECTION 4 – YACHTS**

This section also includes information drawn from all three volumes and so information in this section is inconsistently presented. The contents of this section are drawn from four chapters of the 1903-1965 Annals, one chapter of the supplement and two chapters of the 1971-1985 Annals. Most of the information is presented in what one would consider a reasonable format for doing so but the information from Chapter 3 of the 1971-1985 Annals is very odd. This list combines sail and power vessels alphabetically, names the type of vessel and lists the years in which the respective names appeared in Yearbooks, without reference to who owned the vessels. Most curious...

Again, the file is “bookmarked” and “searchable”. You should find an icon near the upper left corner that resembles a piece of blue ribbon. Clicking on this will display the list of bookmarks and clicking on any of the bookmarks will take you to the relevant page in the file. To search the document, type in an appropriate word in the box near the middle of the top line of the display and then click on the magnifying glass icon. If the word exists in the file, you will be taken to the first instance of it. Using the down arrow, you can move to subsequent instances. Occasionally, information has been inserted on document pages to show the location of pages referred to in the text of the annals. When this is done, reference is made to the PDF page, not the page as numbered in the books. The PDF page is shown as 64/164, for example, in a window on the top line of the display. You can overwrite the leftmost number with another and then jump to that page.

## CHAPTER 4

# *Early Yachts*

IN THE R.V.Y.C.

FROM 1903 TO ABOUT 1933

THE FOLLOWING LIST of the first sail yachts in the Club cannot be said to be complete, nevertheless it provides a record of the better known vessels and was compiled from newspaper files of The Province, News-Advertiser, The World and The Sun during the first three decades of the Club activities. Vancouver newspapers gave very complete coverage of sailing events in that period when yacht racing commanded wide public interest.

**ABEGWEIT**—32 ft. aux. Columbia River centerboard cruising sloop built at Steveston in 1912 for H. C. Shaw, who joined the Club in 1911.

**ADANAC**—18 ft. sloop designed and built by Horace Stone in 1910.

**ADDIE**—27 ft. open catboat sloop built in 1902 for Bert Austin at Vancouver Shipyard by William Watt, the first yacht constructed at the yard. Addie was in the original R.V.Y.C. fleet.

**ADELPHI**—44 ft. schooner designed by E. B. Schock for Thicke brothers. Built 1912, sailed by the Thicke brothers till 1919 when sold to Bert Austin, who sold it in 1922 to Seattle.

**AILS A I**—28.5 ft. D class aux. yawl, Mower design. Built 1907 by Bob Granger, originally named Ta-Meri. Subsequent owners included Ron Maitland, Tom Ramsay, Alan Leckie, Bill Ball and N. S. McDonald.

**AILS A II**—22.5 ft. D class aux. yawl built 1911 by Bob Granger. Owners included J. H. Willard and Joe Wilkinson.

**ALEXANDRA**—45 ft. sloop designed for R.V.Y.C. syndicate by William Fyfe of Fairlie, Scotland and built 1907 by Wm. Watts of Vancouver Shipyard. Won on raffle by A. J. Kapelle and purchased from him by E. B. Deane who raced her keenly for years against Spirit I and Spirit II. During First World War her lead keel was commandeered and she was beached. Capt. B. L. Johnson and two other returned naval officers, R. Rowe Holland and Fred G. T. Lucas re-conditioned her. Subsequently Capt. Johnson was sole owner and he later traded her to Walter Cline, who sailed her for some years. In 1938 she

was practically completely rebuilt by Don Sinclair at Coal Harbour Shipyards for Temple H. Wright who sailed her in active competition till the war years and again till 1951 when she was sold to Seattle. The original tiller of Alexandra was donated to the Club as a perpetual trophy for Frostbite Dinghy competition by Temple H. Wright in 1955.

**ALOHA**—B class sloop brought from Victoria in 1906 by W. E. and C. L. Norris. Both were drowned off the yacht near Deep Cove, North Arm, Burrard Inlet. The yacht was found drifting and it was presumed that either both brothers were knocked overboard or that one fell overboard and the other jumped in to help, and that the ship sailed on. The bodies were never found. Aloha was owned in 1908 by Bill Templeton and was destroyed in the fire which razed the Stanley Park Clubhouse, December, 1909.

**AMORITA** ex **IMP**—A class sloop built by Johnson Bros., Seattle. Brought to Vancouver by George Beveridge in 1910. In 1912 she was owned by Bill Templeton who sailed her with some success till he built the Tamahnowus in 1921. Amorita was sold to Seattle.

**ANDI LAILEY** ex **DAWN**—49 ft. yawl built 1917 at New York. Brought from Chicago to Victoria 1925 and purchased 1926 by E. T. Rogers, who, in 1927, re-named her Andi Lailey. Sold to Tacoma in 1941.

**ANYWHERE**—45 ft. yawl built 1929 by H. C. Elliott and his sons Clint and Harry at the foot of Angus on North Arm, Fraser River, to design by Gerald Seaton. "Sticks" of yellow cedar were selected, cut and trimmed from standing timber at Deep Cove, North Arm, Burrard Inlet by the Elliotts. Clint Elliott still sails Anywhere after 35 years in commission—an outstanding record locally.

**ARDRIE**—B class sloop built at Prince Rupert in 1915 by George Askew. Owned by Harry Marshall in 1921 and by Walter Thicke 1923-26.

**ARMIDA**—36 ft. yawl designed by Halliday, built by Don Sinclair at Coal Harbour Shipyards for Tom Ramsay in 1935. Was record winner of all eight races entered in 1939. Sold 1944 to Seattle and later to California.

**ASTHORE**—32 ft. B class sloop built 1913 at Vancouver Shipyard for Wm. McDougal who raced her for some years. Other owners were Oliphant Bell and Reg Purves. Sold 1926 to Victoria.

**ASHIGAMIK**—36 ft. schooner built 1894 at Seattle. Purchased 1923 by Oswald Moseley who sailed her till the early forties.

**ATLANTA**—26 ft. cutter built in U.K. Owned by W. L. (Bill) Hunt from about 1926 to 1961.

**BANSHEE**—Known as "French" Banshee, sloop in the original fleet 1903 owned by Albert French, in 1905-6 by Norman Sawers.

**BANSHEE**—Known as "Irish" Banshee, sloop also in the first fleet, owned 1903-06 by Robert and George Cassidy, K.C. The latter became Justice of the Admiralty Court, Supreme Court of Canada.

- BELLA E**—29 ft. yawl, raised deck cruiser. Built 1921 at Beach Avenue Shipyard, foot of Burrard St., by H. C. and Clint Elliott to design by Gerald Seaton. Owned 1949 by E. B. Shearman who re-named her Free Lance.
- BERTHA**—34 ft. aux. centreboard yawl was in the original fleet. Reputed to be the first yacht in the Club to have an aux. gasoline engine. Owners included P. N. Thompson, C. S. V. Branch, W. A. Bauer, and A. E. White. Was originally designed for duck shooting on the Fraser River.
- BLUE GROUSE**—Sloop owned by Fred Lucas in 1903. Was first winner of the Graveley Cup.
- BLUE MIST**—46 ft. cruising cutter built 1932 by C. G. Crebbin.
- BOSUN**—Aux. sloop owned 1904-05 by George Bushby.
- BRITANNIA**—36 ft. centreboard sloop, was a "sandbagger". Owners included F. G. N. Seaton and Fred Sterling, in 1905 and 1906. In 1913 S. R. Smith and in 1919 R. A. Bindley.
- CANUCK**—32 ft. C class sloop built 1913 by R. K. Scarlett to give competition to Ted Geary's "Empress" sloops from Seattle.
- CHEEMAUN**—Centreboard sloop owned 1904-06 by Fred G. T. Lucas.
- CHINOOK**—Aux. schooner built in 1900. Owned in 1906 by Max Macgowan and in 1913 by Capt. A. W. Davidson.
- COLUMBIA**—Aux. schooner owned 1904 by Rev. John Antle. It became a British Columbia Coast Mission vessel.
- COOLBAWN**—Columbia River sloop owned 1904-06 by D. Cambie.
- COPPER QUEEN**—Centreboard sloop from Crofton, V.I., owned in 1906 by James Sterling and later by Ron Maitland.
- CRESSET**—40 ft. cutter, designed and owned by Douglas P. and F. Wavell Urry, built by George Askew and launched from his False Creek Yard near Burrard Bridge in June, 1929. Originally rigged as a gaff head club topsail, three headsail cutter, she passed through the usual stages of rig modernization. Carrying a crew of 15, she won her first English Bay Regatta in the year of her launching. She was sold to H. St. Claire Jellett in 1953 and in 1958 to her present owner, Gerry Palmer.
- DAWENDENNA**—37 ft. former Nanaimo pilot cutter. Purchased by Oswald Moseley 1903 and in the first fleet. Owned by Fred Schooley in 1905.
- DAWN**—See Andi Lailey.
- DELORES**—Sloop from Victoria, owned 1904 by C. O. Julian.
- DIONE**—26 ft. B class sloop from Victoria. Won Graveley Cup in 1907. Owners included Henry Bell-Irving, W. G. McKenzie, Fred Foster, Ron Maitland, Bob Marshall, Allan Leckie.
- DOLPHIN**—Schooner owned in 1905 by William Stark.
- DORIS**—32 ft. aux. centreboard sloop built in 1924 by George Askew.



- EALASAIID**—32 ft. B class cruising sloop designed by Tom Halliday, built by Ken MacKenzie and launched 1930. Owned and sailed in active competition by Mr. Mackenzie for thirty-five years, Ealasaid has a unique record of racing victories. In 1952 she won the coveted Lipton Cup in International competition at Cowichan Bay, a frequent winner at English Bay Regattas, and has won the Ballenas Island and Fraser Lightship Races. Originally a gaff-rigged sloop she was changed to Marconi rig in 1936 and had a new mast and modern mast-headed rig fitted in 1955. Still winning races with Ken at the tiller, this trim sloop is one of the best maintained vessels and is a credit to the fleet.
- EILEEN**—33 ft. yawl built 1904 for Commodore W. E. Graveley. Later owners included Phil Whitehead, Reg Purves, Bill Roedde, H. St. Claire Jellett, Tom Halliday.
- ELMARSH**—Yawl owned 1912 by Alex Marshall, sold 1923 to Victoria.
- ELSA MAY**—40 ft. aux. sloop built at Johnson & Walkers Shipyard in 1907 for Curtis Davidson. Later owners included Ernestine Smith (Mrs. A. H. Jefferd), Commodore G. F. Gyles, Noel Jones. Her name is engraved on many Club Trophies for the early day long distance races. Wrecked May, 1931, at North Entrance to Silva Bay, Flat Top Islands.
- FOUR WINDS**—36 ft. yawl, double-ender, built 1906 for J. E. Macrae who that year, when the Club became "Royal", presented the signal cannon which graces the front lawn of Jericho Clubhouse. Sold to Victoria. As recent as 1959 Art Jefferd saw Four Winds up coast, in commission and in apparent good shape.
- FREE LANCE**—See Bella E.
- FROLIC**—Open yawl. Was in original fleet 1903, owned by Wm. Hodson.
- GAMINE**—Sloop built 1925 by George Askew to John Alden design for L. T. Alden. Later owned by H. T. (Freddie) Frederickson. Sold to the U.S.
- GAZEKA**—40 ft. aux. yawl built for A. G. Thynne in 1906. Owners included Commodore C. B. Macneill, Ron Maitland, Walter Cline, F. Griffiths. Sold in 1926 to Seattle.
- GLENDUCHERT**—30 ft. flush deck sloop built 1897 to design by J. H. McNab. Was in the original fleet, owned by Alex Grant.
- GOLDEN ROD**—B class centreboard sloop owned 1905-06 by H. C. Clarke.
- GOLLIWOG**—36 ft. yawl built by V. M. Dafoe. Was in the first fleet, owned by A. G. Thynne. Other owners were C. B. Macneill and Tom Pattison.
- GLENDOLYN**—Sloop purchased in 1913 in Puget Sound. Was built by L. & D. Johnson, Seattle, as a trial horse for Spirit I. Owned here by Tom Pattison, Phil Whitehead, R. Rowe Holland. Sold 1924 to Seattle.

- HAIDEE**—40 ft. centreboard yawl built at Vancouver Shipyards. Owned by W. A. Bauer in 1906, later by C. B. Stahlschmidt in 1926-31.
- HALCYON**—30 ft. sloop built 1897 by V. M. Dafoe. Owned 1905 by Percy Charleson, in 1923 by Dr. Ernest Gillies and in 1925 by Claude Effinger. She was re-named Patteran in 1936.
- HAZEL**—32 ft. aux. sloop owned 1922-26 by Alex Marshall. Re-named Madeline.
- HEREANDTHERE**—40 ft. yawl built 1930 by George Askew. Sister ship to Nelmar. Sold to C. W. Clarke in 1953, who sold her to J. Boyd Gordon of Campbell River in 1963.
- HIAWATHA**—Sloop in first fleet, owned in 1903 by F. W. Fisher and in 1904-06 by Erl Macgowan.
- IMP**—See Amorita.
- INTREPID**—C class aux. sloop built in 1906 by Louis (Speck) Jewitt. Later owned by Ron Maitland. Sold to Seattle in 1921.
- IOLA** ex **SWIPE**—33 ft. centreboard sloop built 1906 from lumber and fittings "acquired" by the Cao brothers. Later fitted with keel. Owned 1912 by Dave Manley and later by R. Rowe Holland and A. Buckerfield.
- IVANHOE**—39 ft. sloop built 1906 by Johnson & Walker, Cedar Cove, for C. A. Godson. This sturdy vessel is now yawl rigged and is still in commission sailing out of West Vancouver Yacht Club, owned by Ralph Vittery.
- JABBERWOCK**—25 ft. sloop in the original fleet, owned 1903 by Wm. Hodson. Was owned 1904 by C. B. Macneill.
- KELPIE**—38 ft. heavy weather cruising cutter, built 1893 at Port Blakeley, Wash., as a pilot cutter. Owned by the Lucas brothers. In 1913 re-named Kyrielle.
- KYRIELLE**—See Kelpie.
- LADY PAT**—38 ft. R class sloop, John Alden design, built 1927 at North Vancouver for Ron Maitland—see chapter on Lipton Cup R Class Racing. Sold to Seattle.
- LADY VAN**—39 ft. R class sloop, 23 ft. waterline, C. E. Nicholson design. Built 1928 at North Vancouver for R.V.Y.C. syndicate headed by Tom Ramsay—see chapter on Lipton Cup R Class Racing. Owned 1931-34 by Commodore Hon. E. W. Hamber. Sold to Seattle. Still in commission and was at the 1964 P.I.Y.A. Regatta in English Bay.
- LAVEROCK**—Sloop owned in 1903 by Rev. John Antle, was in first fleet.
- LAVITA**—Aux. cutter built in Puget Sound. Purchased 1909 by E. W. Maclean. Later owners were C. O. Julian, Ron Maitland.
- MABEL DELL**—See Naden.
- MADELINE**—29 ft. B class sloop from Puget Sound. Owned in 1905-06 by Bert Austin, later owners were A. H. Smythe, J. Green, W. J. Thicke.
- MADELINE**—32 ft. aux. sloop, former Hazel (see Hazel).

- MAPLE LEAF**—Aux. ketch built and owned by Alex MacLaren, Barnet Saw-Mills.
- MARATEA**—40 ft. aux. yawl built 1927 at Linton's Yard for W. Oliphant Bell. Owned later by Commodore J. A. Longley. Now in W.V.Y.C. fleet.
- MARGOT**—20 ft. keel sloop owned 1903 by Commodore W. E. Graveley. Was the first flagship of the fleet. Owned in 1904 by C. O. Julian.
- MARIETTA**—B class sloop purchased in 1906 by Alex Marshall from Victoria. Owned in 1908 by Gordon Willis who sold her later to Bill Templeton.
- MARLOU**—26 ft. C Class sloop built 1935 at Stanley Park Shipyards for Temple H. Wright. Sold 1937 to Pat Field, who sold her in 1939 to H. J. Knight.
- MINERVA**—46 ft. yawl built at Kowloon Dockyard, Hong Kong, for James Adamson, chief engineer of the C.P.R. trans-Pacific liner Empress of India. Purchased 1908 by W. E. Graveley, P. N. Thompson, F. M. Chaldecott and Jack Scott, owned later by P. N. Thompson and sold 1927 to H. A. (Hubie) Wallace. This beautiful yacht had a very active racing and cruising career—see chapter on Beaver Cup and Other Races—coming to an untimely end with its accidental destruction by fire at Ganges Harbour in 1936.
- NADEN**—100 ft. aux. schooner built by Wallace Shipyard for the Dominion Government. Purchased in 1924 by Sir Joe W. Hobbs and re-named Mabel Dell. Was later sold to California.
- NAIVETTE**—26 ft. yawl built 1927 at Vancouver for C. G. Crebbin.
- NANCY**—31 ft. yawl built in Victoria 1900 and acquired in 1903 by C. S. V. Branch. Owned in 1905 by Oswald Moseley and in 1906 by A. T. Paddon.
- NANCY M**—32 ft. sloop owned 1914 by Oswald Moseley.
- NARBETHONG**—B class centreboard sloop owned 1904-05 by C. B. Wainwright. She was later sold to Prince Rupert.
- NELMAR**—38 ft. aux. yawl built for Alex Marshall by George Askew in 1930—see Beaver Cup Races. Mr. Marshall actively cruised Coast waters in Nelmar for over 10 years when she was sold to Vans MacDonald, who sold her in 1946 to the O'Hanlan brothers and sailed to Newport Beach, Calif.
- NYMPH**—50 ft. yawl built in Puget Sound. Brought to Vancouver by J. Edward Bird in 1920. Actively sailed by Mr. Bird and his son Harry J. Bird till sold in 1924 to movie actor Ken Maynard in Los Angeles.
- ONAWAY**—Sloop built 1905 by William McDougall. She won the Mackie Trophy in 1906 or 1907, the symbol at that time of International Championship.

**ONOMA**—40 ft. sloop built at Boston, Mass. Purchased in 1913 by a syndicate of J. P. Fell, John Nichol, Bill Billings, and the Hon. Ian McKenzie, M.P. Converted to yawl rig in 1930. Sold 1932 to Tom Usborne.

**ORPHAN**—Sloop owned in 1903 by C. S. V. Branch. There is some doubt if she was an original member of the fleet, but it is known that Mr. Branch owned the 31 ft. yawl Nancy in August of 1903.

**PATHFINDER**—25 ft. cruising yawl built from designs by Thomas Fleming Day, a "Seabird" similar to Tamerlane. Dr. Day was the Editor of "Rudder" and made the west to east crossing of the Atlantic on a ship of this design. Pathfinder was purchased from Victoria by Gordon Stuart.

**PATRICIA**—36 ft. R Class sloop, Nicholson design, built 1921 by R.V.Y.C. syndicate headed by Ron Maitland. First yacht in fleet with Marconi rig (see R Class Racing Chapter). Sold 1923 to Pierpoint Davis of Los Angeles.

**PATTERAN**—See Halcyon.

**PENGUIN**—33 ft. sloop built 1907 by Wallace Shipyard for Gordon Legg. Owned 1920-24 by Clarence Wallace, in 1924-28 by Harry J. Bird and in 1928-31 by Harry Eakins. Burned off Spanish Banks in 1931.

**PETREL**—25½ ft. sloop owned by Albert Hancock, in original fleet 1903.

**PIRATE**—27 ft. Columbia River sloop, also an original, owned 1903 by D. Cambie. Was owned by the Springer brothers in 1904.

**QUEENIE**—25 ft. centreboard sloop owned in 1906 by Ron Maitland.

**REDSKIN**—B class sloop, C. D. Mower design. Owned 1905-06 by Harry Frith. Thicke brothers won the Graveley Cup with her in 1906. Owned by George Beveridge in 1908 and Art Jefferd in 1912. Sold to Vince Ramsay who won the Rand Series and possession of the Rand Cup in 1913. Some years later, Mrs. Ramsay, mother of Vincent, donated the Cup to the Club in his memory—he was killed on active service in the First World War—and the cup is now known as the Redskin Trophy. Redskin sank in Howe Sound.

**RIOWNA**—R class sloop from the Great Lakes, designed by George Owen of Boston, Mass. Purchased by R.V.Y.C. syndicate 1925 to contest the Lipton Cup—see chapter on R Class Racing. Later purchased and sailed by Commodore G. F. Gyles and son Cedric. Sold to Seattle and renamed Svea.

**ROB ROY**—Centreboard sloop built for Wm. McDougall in 1902. Was in original fleet.

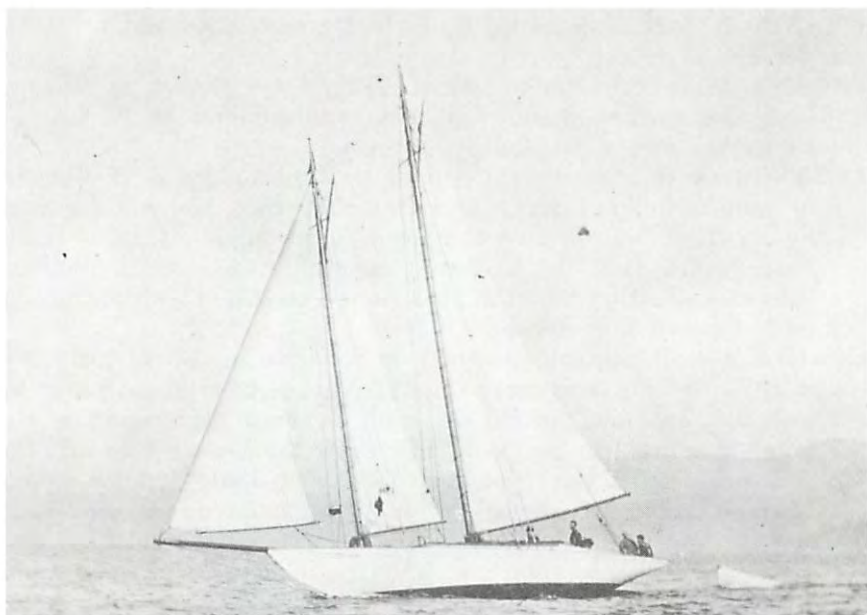
**SALLY LUNN**—40 ft. cruising yawl, purchased 1924 by Ernest Woodward from The Lake of the Woods. Wrecked at Kitsilano Beach 1924.

**SILVER SPRAY**—B class centreboard cruising sloop, owned and sailed by W. F. (Billy) Findlay 1906 to 1913.

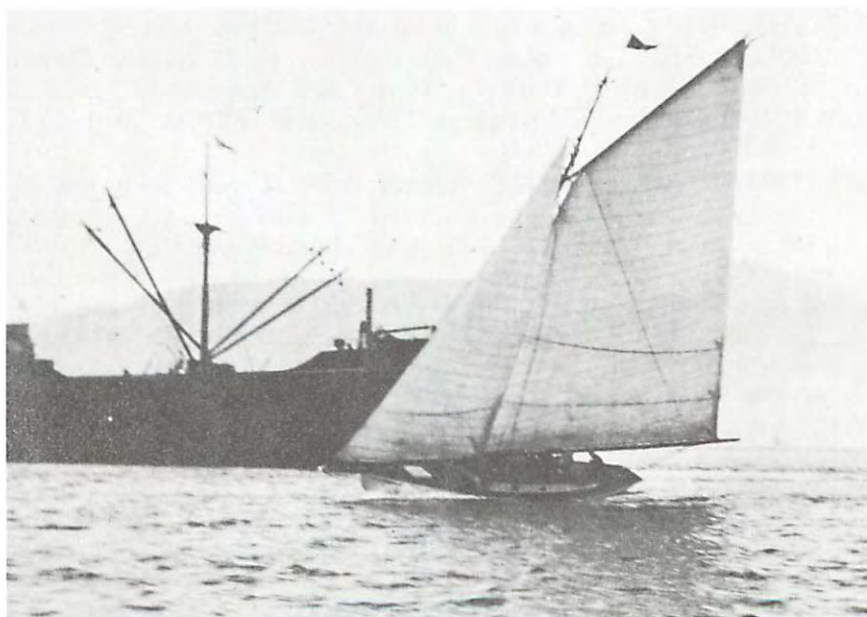


- SIREN**—30 ft. half-deck clinker built sloop from Vancouver Shipyard. In the original fleet, owned by Alex Grant. Was owned in 1905-06 by Capt. B. L. Johnson. It was a "sandbagger". Her bowsprit extended 6 feet over straight stem and main boom 6 feet over stern.
- SLANI**—46 ft., originally the pilot sloop Claymore. Converted to yawl rig in 1904 by R. H. Alexander and later converted to ketch rig.
- SNOOKY**—Sloop owned in 1924-26 by Stuart Dollar.
- SPENDRIFT**—See Spraydrift.
- SPIRIT I**—42 ft. sloop designed and built by E. L. "Ted" Geary in Seattle, 1906. (See chapter on Early International Races.) Purchased in 1913 by the Cao brothers and by E. A. Woodward in 1924. It was burned on Indian Arm in 1931.
- SPIRIT II**—48 ft. sloop also designed and built by Ted Geary, Seattle, in 1909. Owned in 1913 by Archie Selwood. (See Early Int. Races.) R. A. Bindley owned her in 1921-23 when she was acquired by Harold A. Jones who rebuilt and actively sailed this champion ship until 1947 when he built the new 66 ft. Spirit. Spirit II was sold to Jay Augustine in Seattle, 1947.
- SPRAYDRIFT** ex **SPENDRIFT**—30 ft. centreboard sloop built in 1912. Owned and sailed until the early thirties by Gordon B. Warren.
- SWIPE**—See Iola.
- TAMAHNOWUS**—34 ft. yawl built 1921 by Bill Templeton. Her distinctive red hull was a familiar sight on English Bay and long distance races for over two decades, winning the Beaver Cup in 1923 and twice winning the Julian Cup with lady skippers Mrs. E. W. Templeton in 1925 and Miss B. Pedlow in 1937. She was sold to Seattle.
- TAMERLANE**—25 ft. aux. yawl, a "Seabird" designed by T. F. Day, built 1910 at North Vancouver for W. G. (Billy) Breeze, who sailed her for several years before selling to C. W. Lauback.
- TA-MERI**—See Ailsa I.
- TENDERFOOT**—33 ft. schooner built 1910 by Harry Bird, boatbuilder, Victoria. Sailed by him and a crew of three to San Francisco and return in 1912. Bought 1913 by Fred O. Mills and sailed actively by him for twenty years. Sold to Seattle in 1933. Harry Bird took three years to build her and she was reputed to be one of the finest built yachts afloat—not a butt in any plank.
- THELMA**—28 ft. sloop built Vancouver Shipyard 1902. One of original fleet and owned 1903 by Oswald Moseley, in 1904-05 by J. P. Roberts, and in 1906 by J. Padden.
- TILlicum**—B class sloop, C. D. Mower design, sister ship to Redskin, Aloha and Marietta. Owned 1904-07 by E. B. Deane, and won the Graveley Cup in 1904 and 1905. Owned by Fred Lucas in 1908 and by Tom Ramsay in 1912. Owned by Capt. A. C. Crawford in 1931.

- TITANIA**—B class sloop owned by E. B. Deane in 1904 and by V. L. Venable in 1906.
- TRUANT**—38 ft. yawl built 1908 at Victoria for Walter E. Adams, later Commodore of Royal Victoria and Admiral of P.I.Y.A. in 1927. Was owned 1929-32 by Roy Ginn.
- TURENGA**—R class racing sloop built by Commodore B. T. Rogers to compete in first Lipton Cup race for this class. She was defeated by Sir Tom, Seattle (see chapter R Class Lipton Cup Racing). Subsequently sailed by E. T. Rogers, P. T. Rogers and F. Rogers. Sold to Frank Duff Stuart in 1935. Sank in collision with Steamship Lady Pam off Port Atkinson 1939.
- UWHILNA**—48 ft. all teak yawl built in Shanghai for R. H. Alexander in 1913, winning the Beaver Cup that year. Sold to Puget Sound in 1920 and brought back to the Club by Fred Mills in 1934. He sailed it actively in competition, winning the Beaver Cup in 1938 and was awarded the "Bird Rock Trophy" in 1941. Uwhilna, sailed by Fred Mills, was the first Club yacht to circumnavigate Vancouver Island. Sold in 1944 to Seattle, where she still sails.
- VALKYRIE II** ex **WANDERING LASSIE**—Schooner purchased from Victoria 1930 by S. R. Smith.
- VAMPIRE**—B class sloop brought from Halifax 1905 by W. B. Ferrie. Owners included R. W. Holland in 1909, Vincent Ramsay 1912, D. F. Morrison 1913, E. Shear 1919.
- VERADA**—40 ft. yawl built 1910 at Seattle. Sold 1926 to A. E. White.
- VERONA**—B class aux. sloop built 1906 for C. O. Julian. Owners were Ron Maitland, G. C. Van Horne, S. P. Judge and C. Smalley.
- VOLAGE**—Yawl built at Victoria in 1890's for H. F. Kirk. In R.V.Y.C. fleet 1907.
- WESTWARD HO** ex **WHITE WINGS II**—54 ft. yawl built 1927 by George Askew for Walter Cline who traded her to Capt. B. L. Johnson for Alexandra in 1930. Capt. Johnson fitted her with the first Genoa sail in local waters and sailed her very actively for over a decade, winning the Beaver Cup in 1930, 1937 and 1939, the Swiftsure Classic in 1931, and acquired the Bird Rock Trophy in 1936. (See chapters on Swiftsure Races, P.I.Y.A. Regattas.) Later became a missionary vessel in the South Seas.
- WIDEAWAKE**—32 ft. sloop purchased from Victoria 1904 by William Hodson. Owned in 1906 by E. B. Deane.
- WINONA**—27 ft. sloop designed and built by Ted Geary, Seattle, in 1910. Was a "trial-horse" for Spirit I. Purchased in 1913 by Ron Maitland. Owned in 1922 by Allan Leckie and in 1926 by G. M. Harris. Returned to Puget Sound.
- YELLOW KID**—18 ft. yawl, owned 1906 by W. G. (Billy) Breeze.
- YUNO**—Aux. cruising ketch acquired 1904 by E. W. Stark and Frank Wright, father of Temple H., later Commodore Wright.



*Schooner ADELPHI, 1912.*



*Sloop AMORITA ex IMP, 1912.*



## CHAPTER 10

# *Early Power Vessels*

IN THE R.V.Y.C.

FROM 1903 TO ABOUT 1935

**ADORIAM**—30 ft., built 1910, owner G. A. Roedde. Raised deck cabin cruiser.

**AGNELLY**—29.6 ft., built 1915, owner J. H. Willard.

**ALICE HASTINGS**—38.7 ft., built 1909, owner J. Hastings. Originally named Beulah, built by Matsumoto at Steveston. Powered with a 4 cyl. "Giant" truck engine, with engine room control, complete with bell system. Re-named Margaree and was owned 1936 by Wm. (Bill) Morrow. Owned 1941 to 1951 by F. Bryson Smith.

**ANDANTE**—31.6 ft., built 1911, owner Alex Marshall.

**AQUILO**—168 ft., built 1906 on east coast U.S. Brought to Vancouver 1912 via Cape Horn by Commodore B. T. Rogers. Originally coal burner, was converted to oil. Steam powered.

**ARIEL**—37.2 ft., built 1905, owner G. E. Bower.

**ARIEL III**—27.8 ft., built 1923, owner J. F. Malkin.

**ARRANMORE**—36.7 ft., built 1912, owner J. Emerson.

**ARRAWAC** ex **SUSIE W**—46 ft., built 1910, owner A. L. Bell.

**ARTFUL DODGER**—26 ft., built 1920, owner Harold A. Jones, later owned by W. H. Cotter.

**ATHERO** ex **SUTIL**—30.9 ft., built in Hong Kong 1912. Owned by J. H. Willard.

**ATLINTOO**—36.1 ft., built 1906, owner J. J. Deeks.

**ATSILAC** ex **SEA OTTER**—47.8 ft., built 1917, owner T. Yates.

**BEATRICE**—44.8 ft., built 1907, owner H. B. Bell-Irving.

**BEATRICE R.**—33 ft., built 1913, owner G. E. Gudewill.

**BELMONT**—64 ft., built 1917, owner R. M. Maitland.

**BILJON**—Built 1928, owner W. G. Ferguson.

**BOLD MARY**—44.5 ft., built 1911, owner J. A. Johnston.

**CANCOLIM**—71 ft., built 1928, owner Ray Phelps.

**CATHRINE I.**—33.5 ft., built 1922, re-built to 37.1 ft. in 1932, owned by T. E. (Tommy) Leigh.

**CATHERINE II**—Owned 1926 by H. E. Stafford.

**CAWARRA**—35.7 ft., built 1912, owned by A. L. Bell, later by E. C. B. Thompson.

**CHARMAIN**—Owned in 1926 by Carl Bingham.

**CHICORA**—30 ft., built 1921, owner J. S. Halse.

**CHLORIS II**—38.8 ft., built 1917, owner R. J. Sprott.

**CLEODOXA** ex **CORA MARIE** ex **YRREBEINNA**—49 ft., built 1913, re-built 1924. Owners included R. M. Maitland, W. C. Shelly, R. J. Sprott, Bruce Arundel and Stan Morton, who still maintains her in commission.

**COLIFER**—27.2 ft., built 1913, owner Colin C. Ferrie.

**CORA MARIE**—105 ft., built 1930, owner W. C. Shelly.

**CORA MAY** re-named **WANDERER**—56 ft., built 1926 by T. E. Leigh. Owned in 1961-62 by Commodore Temple H. Wright and J. D. Maitland who re-named the vessel Wanderer.

**CORESEUS** ex **REINDEER** re-named **EVELINA M.**, **XANADU**—94.5 ft., built 1917. A United States sub-chaser brought to the Club by W. P. Dewees and subsequently owned by H. Haskamp, F. D. Lundy, Doan M. Hartnell.

**CORSAIR I.**—32 ft., built 1929, owner Ken Sulley.

**DAPHRONA**—57.3 ft., built in Hong Kong 1912 for W. F. Brougham, later owned by Roy W. Ginn.

**DAVY JONES**—73 ft., built 1907 in Seattle. Imported 1910 by E. B. Deane. Re-named Neydla by B. Arundel.

**DEERLEAP** re-named **FIFER**, **KITTEN F.**—67.8 ft., built 1928, owners included A. W. McLimont and Col. Victor Spencer.

**DORSAL**—Owned by B. P. Weston in 1926.

**EILEEN**—23.1 ft., built 1904, owned by H. D. Hulme.

**ELGOMAR**—38 ft., built 1912, owned by H. M. Burrit.

**ELANE**—Owned by E. A. Sherman in 1931.

**ELAOITE**—31.7 ft., built 1908, owners W. Collister, F. H. Mountain.

**ELECTRA**—36 ft., built 1905, owned by R. H. Sperling.

**ELVIRA**—Owned by the Most Reverend A. U. dePencier.

**EMOH**—44 ft., built 1912, owners R. W. Holland, H. O. Bell-Irving.

**EPAULINE** re-named **SEWICKLEY**, **WALITHY**—69 ft., built 1911, owners F. L. Buckley, W. C. Shelly, S. L. Howe, Mrs. K. A. Easton, The Hon. Clarence Wallace, Les Simmers, who still maintains her in commission.

**ETHELDA**—35.4 ft., built 1908, owned by W. J. Taafe.

**EVELYN I.**—44.3 ft., built 1910, owned by S. C. Mortimer.

**EVELINA M.**—See Coreseus.

**FIFER** (original)—See Deerleap.

**FORBES W. F.**—Owned by I. A. Shaw.

**FOXHOUND II**—Owned by Hon. E. W. Hamber.

**FULL MOON**—48 ft., built 1912 by Knox Walkem.

**FUSILIER** ex **JEANEVA M.**—46 ft., built in Vancouver by Lind & Co.



in 1929 for Mr. Philip White. Sold in 1936 to Col. K. A. McLennan. Re-built and re-named Fusilier, sold to joint owners F. H. Clendenning, William Crawford, E. F. Riddell and Col. K. A. McLennan. In 1941 sold to R. J. Dawson and on loan to R.C.A.F. during the war, stationed at Victoria and Patricia Bay. In 1945 purchased by Dr. R. G. Large of Prince Rupert. Bought by Empire Shipping Co. Ltd. in 1948 and sold to F. S. Clendenning in 1953 who is the present owner.

**GENE**—40 ft., built 1912, owned by C. Wakeley.

**GLENIFFER**—40 ft., built in Hong Kong 1912 for Stuart Cameron, later owners were R. M. Maitland, J. C. McPherson and Ken F. Mair, who still maintains her in commission.

**GOGLU**—24.3 ft., built by Hoffar Beeching Ltd. in 1928 for Mrs. C. E. Swift.

**GOLLIWOG**—Owned 1926 by Capt. A. Millman.

**GRETA M.** re-named **THOMAS CROSBY IV.**—61.5 ft., built 1922 for S. D. Brooks. Later owned by A. E. McMaster.

**HAIDA PRINCESS** ex **CEDOLL**—30 ft., built 1925, owned by E. D. Judson.

**HALF MOON**—38.6 ft., built 1909 by Knox Walkem.

**HAZEL**—29 ft., built 1906, owned by W. S. Wilband.

**HELENA B.** ex **IHPIS**—Originally owned by Mr. Norman Lang. Owned in 1926 by W. C. Ditmars. Name changed by N. T. Burdick, later owned by George Lindsay.

**HERMIT**—42.9 ft., built 1927 for George Kidd. Owned 1938 by P. Locke.

**HOO HOO**—28.5 ft., built 1909 by B. W. Sinclair.

**ILLAWAY**—37 ft., built 1911 for W. A. Akhurst.

**INOMAR I.**—37.2 ft., built 1922 by Henry Hoffar.

**INOMAR II.**—37.4 ft., built 1924 by Henry Hoffar, subsequently owned by J. P. D. Malkin, Mrs. E. H. Moore.

**INOMAR III.**—48 ft., built 1925 by Henry Hoffar, J. P. D. Malkin and owned later by Wes. Highbie.

**IOLA**—32 ft., built in Great Britain 1908. Brought out by F. N. D. Robertson.

**IPHIS**—See Helena B.

**JOLLY MAC**—53.2 ft., built 1911 for E. J. McFeely. Later owned by W. J. Butt. Owned in 1938 by A. J. Knowland.

**KATHLEEN II**—Owned by G. E. Williamson.

**KENNET II.**—38 ft., built 1927 for E. D. Clarke. Subsequent owners were Jack Newell, Commodore G. F. Gyles, Temple H. (later Commodore) Wright, Miss Ruth Jones.

**KIM**—See Truant.

**KIORA**—37 ft., built 1906 for W. S. Chambers.

**KITTEN F.** ex **FIFER** ex **DEERLEAP** (see).

**KONOMIC**—57 ft., built 1910 for F. T. (later Commodore) Schooley.  
**KAGOME**—Former rum-runner converted to yacht by Philip Rogers in 1934. Was taken over by R.C.A.F. during the war.

**LANGARA**—56 ft., built for J. L. Northey. She ended up 38 years later as a chicken house on Lulu Island.

**LAMALCHI**—35 ft., owned by Roy W. Ginn in late thirties.

**LEOLA V.**—39 ft., built 1928 by Will Vivian.

**LIMIT**—46 ft., built 1908 by A. W. LePage, later owned by E. S. Deane, W. J. Massey.

**LITTLE JEAN**—Owned by C. H. Corkum.

**LOAFER**—Owned by J. J. Banfield in 1906.

**LO'OLBEE**—64 ft., built 1911 by R. P. McLennan, later re-named Palmarsyl.

**MACCARD** ex **LEILA R.**—49.3 ft., built 1913 by W. C. MacKenzie.

**MACUMBA**—Built in 1930 for R. M. Maitland.

**MAGNET V.**—21.7 ft., built 1924, owned by W. E. Shannon.

**MAKEHEWI** ex **CHARLOTTE S.**—35.1 ft., built in 1910. Owned by W. Sulley and sold 1917 to Coast Missions.

**MAULADAY**—Owned in 1926 by H. Holt.

**MAMITA**—48.2 ft. Owners include Frank Wilkinson, P. A. Woodward and Dr. R. E. (Bob) McKechnie, who still maintains this fine vessel in commission with an enviable record of wins in Predicted Log Racing.

**MANANA**—34.6 ft., built 1926 by R. H. Spurrier.

**MARGAREE** ex **ALICE HASTINGS** (see).

**MEANDER**—60.5 ft., built 1934 for George Kidd.

**MERRY MEADE**—36 ft., built 1922 for Jack Newell.

**MANDALAY B**—46.8 ft., built 1923 for G. Beeching, later owned by G. Harris, L. F. Worsley.

**MARDONBILL** re-named **ACRASIA**—44.8 ft., built 1927. Owners included R. Arbuthnot, T. W. (later Commodore) Ayres, R. W. R. Day.

**MI-PAL**—40 ft., built 1922 for Robert Cran.

**MOONLIGHT MAID** ex **LADY STIMSON** ex **STADACONA** ex **COLUMBIA**—168 ft., built 1898 at Philadelphia to be flagship for the Commodore of New York Yacht Club. Sold to Royal Canadian Navy and became accommodation ship at Halifax in World War I. Purchased by Capt. Joe Hobbs and operated as liquor supply vessel off the U.S. Pacific Coast. Purchased by W. P. Dewees and operated by him as a luxurious cruising yacht for many years. Was ultimately sold during World War II to become a tug between Seattle and Alaska.

**MOW PING**—90 ft., built at Hong Kong in 1901 for B. T. (later Commodore) Rogers. She was a steam yacht. Was later lengthened and given a clipper bow. Sold to Commodore C. B. Macneill in 1912. Many years later she ended her days as a tug on the Alberni Canal.

**NATURICH**—38.5 ft., built 1910 for S. J. Castleman.

**NEYDLA** ex **DAVY JONES** (see).

**NORSAL**—122.4 ft., built 1921 for Norman Lang of the Powell River Paper Company. Later owners, S. D. Brooks, W. P. Dewees and W. Clarke Gibson, who maintains her in excellent condition, generously making it available for Crippled Children's Day and for staff outings.

**NORTHERN LIGHT**—43 ft., built 1928 for W. S. (later Commodore) Day. Owned 1938 by C. P. Schwengers.

**OLIVE W**—Owned 1931 by E. P. McDermitt.

**OSOYOOS** re-named **ARIEL** (see).

**PHROSO**—41 ft., built 1913 for H. O. (ex-Commodore) Alexander.

**PHRYNE**—47.2 ft., built 1911 for J. B. Woodworth.

**PRIVATEER**—39.8 ft., built 1922 by Hoffar Motor Boat Co. Owners include: 1922, I. Claman; 1924, J. B. Hoffar; 1924, J. T. North; 1927, W. D. Grant; 1932, E. McL. Boyd; 1939-49, Frank Wilkinson; 1949-52, Joe Wilkinson; 1952, J. C. McPherson; 1952 to date, Graham R. Nightingale.

**PUDDLE DUCK**—42.5 ft., built 1910 for H. deW. King. Walter Sturdy later owned her.

**RAMBLER II**—30 ft., built 1914 for Robert Cran.

**REINDEER**—See *Coreseus*.

**RHINEGOLD**—36 ft., built 1911 at Vancouver Shipyard for T. M. Davies. Owned 1912 to 1919 by Dr. Ian Glen-Campbell, 1919 to 1923 by Allan D. DesBrisay, and from 1923 to date by Col. Colin C. Ferrie, who has consistently cruised in her every season with the exception of the war years. In this outstanding period of service, attending every Club function, Opening Days, Remembrance Days, as well as extensive Gulf of Georgia cruising, the original engine, a 25 H.P. Buffalo 5" bore, 6" stroke (hand started with bar), was only replaced in 1937 with a 75 H.P. Grey Marine "Lugger" which still gives efficient service with a cruising speed of 8½ knots at 2000 R.P.M.

**ROAMER**—Size unknown, owned by J. S. Gall.

**ROANOKE**—Size unknown, owned by N. G. Cull.

**RIO BONITA**—94.5 ft., built 1918, originally a sub-chaser, acquired in 1922 by A. Melville (later Commodore) Dollar.

**ROMANE**—45 ft., built about 1927 at New Westminster as a tow boat. Converted to yacht in 1930 at Vancouver Shipyard for Air Vice-Marshall K. G. Nairn. Had a Hall-Scott Marine Gasoline engine. In the club from 1931 to 1936. Sold to Mr. Cowdry who later sold her for up-coast Mission work.

**ROSCRANNA**—24.3 ft., built 1927 by C. G. Beeching.

**SAL LAL**—44 ft., built 1911. Owned later by Knox Walkem.

**SALTPETRE** re-named **HOPE POINT III**—29.4 ft., built 1930 for



- Ernest Rogers. Later owned by W. G. Dolmage. Now owned by Bob Fraser.
- SEA BEE**—34.4 ft., built 1911 for A. C. Brydone-Jack.
- SEA DREAM**—44 ft., built 1929. Owned by F. J. Whitcroft, Mrs. J. C. Abramson. Now owned by D. C. McPherson.
- SEA OTTER**—Later re-named Atsilac (see).
- SEA SNIPE**—Size unknown, owned by George Buscombe.
- SEAL COVE**—Owned 1926 by J. Emerson.
- SERENA**—40 ft., built 1926 for C. R. Sneyd.
- SHEILEENA** later **HEATHER M.**, then **PRIDE OF THE WEST**—52.8 ft., built at Hong Kong in 1911. Owners included Wm. Farrell, R. M. Maitland, L. A. Lewis.
- SHELMERDENE**—24.3 ft., built 1927 for H. McD. Ridley.
- SILVER HEELS**—34 ft., built 1922 for R. H. Merrick.
- SINBAD**—Size unknown, owned by R. A. Buchannan.
- SNEDDENS**—32 ft., built 1932 for Jack Storey.
- SONGEE**—49.6 ft., built 1911 for R. W. Holland.
- SPARTAN**—45 ft., built 1926 for Frank Barnes.
- SUEJA III**—117 ft., built 1926 in Seattle for Jas. Griffiths (U.S. Registry). but registered on Club roster.
- SULHAMAR**—35 ft., built 1924 at Benson's Shipyard for Art Benson. Later owned by J. B. Hoffar and by J. W. C. (Bud) Duck from 1945 to 1955. Now owned by L. L. Jamieson.
- SUSIE W.** re-named **ARRAWAC** (see).
- SUTIL** re-named **ATHERO** (see).
- SWIFTSURE**—35 ft., built 1905 for J. L. G. Abbott.
- SYRENE**—74.2 ft., built 1921 in Great Britain, brought out by Rev. John Antle. Bowsprit from Syrene, donated by Rev. Antle, graces our front balcony. The vessel is now in the B.C. Forest Service.
- TACITA**—34.6 ft., built 1921 for Andy Benyon.
- TACONITE**—116 ft., built 1930 for W. E. Boeing.
- TETTA I**—Owned 1906-1912 by Frank Parsons.
- TETTA II**—Owned 1912-1924 by Frank Parsons.
- THETIS**—Size unknown, owned by George Buscombe.
- THETYS II**—36.2 ft., built 1925 for Chas. Stringer. Re-built by R. A. Buchanan and re-named Mallard. Owned 1956 by B. Burnett. Still in Club.
- THORA**—33 ft., built 1925 for A. S. Bennett.
- TICOMA**—29.3 ft., built 1922 for A. E. Cox.
- TILLY**—Size unknown, registered in the Club 1906. Owner, G. A. Roedde.
- TIMREH**—28.8 ft., built 1929 for R. H. Tupper.
- TRUANT** ex **KIM**—30 ft. Columbia troller hull built 1929 at foot of Cardero Street. Owned by Dr. Scott Baxter, Doug McPherson,

and now by R. H. (Robbie) Brown, 1965 Commodore of West Vancouver Yacht Club and is his flagship.

**TUSCAN**—Owned 1926 by George Kidd.

**TUSITALA** ex **BARNIBEE**, ex **ELIZABETH**—53.6 ft., built 1908 for Fred Buscombe. Subsequently owned by A. W. LePage.

**UBIQUE I**—38 ft., built 1929 at Bidwell Boat Works for Capt. Gray. Owned 1936 by C. P. Schwengers and in 1937 by W. S. Day. Since 1937 she has been owned by Claude S. Thicke, who still operates her.

**URSILLA**—Owned 1926 by T. R. Nickson.

**VAQUERO**—31.8 ft., built 1910. In club, but no record of owner.

**VENCEDOR**—146.3 ft., built 1913 in Great Britain. Originally the training ship Exmouth II. Brought to the Pacific Coast by Capt. Joe Hobbs, who sold to Commodore The Hon. E. W. Hamber whose flagship it was during his term 1931 to 1935.

**VIREVE**—31.7 ft., built 1913 for Alex Marshall.

**VOYAGEUR III**—Owned by P. N. Pretty.

**WALITHY I**—62.8 ft., built at Wallace Shipyard for C. Wallace, later The Hon. Clarence Wallace, Lieut.-Governor of B.C. ....-.....

**WALRONDO**—60 ft., built at Hong Kong in 1912 for C. R. Gordon.

**WALRONDO II**—34.3 ft., built by C. R. Gordon.

**WHIPPETT, MISS**—Owned 1931 by J. G. MacClay.

**WHISTLE WING**—39.3 ft., built 1907 for F. W. Foster.

**WHITE IRIS**—30.4 ft., built 1911 for John Ashby.

**WILLENA F.**—35.5 ft., built 1925 for Gordon Farrell.

**WILLOWBEE G.**, later **AILEEN**—48.2 ft., built for G. E. Gudewill in 1927.

**WYRILL**—48.8 ft., built 1911 for W. A. Bauer.

**WYRILL**—62 ft., built 1931 for Pacific Mills Ltd. Owned 1950 to 1960 by Lol Killam.

**XANADU**—See Coreseus.

**YSIDRO**—39 ft., built 1910 for R. F. Marpole. Later owned by F. L. Hutching, Ron Maitland.

**YOLANDA**—31.5 ft., built 1914 for Bruce Arundel.



*Knox Walkem's FULL MOON, 1912.*



*Post War Sailing Yachts*

FROM 1938 ON

- AIDA**—26 ft. sloop, built 1958 at New Westminster. Owned by H. B. Vogel from 1958 on.
- ALANA**—36 ft. 6 Metre sloop, built in Great Britain. Imported by Sandy Martin 1952, owned by Ches Rickard 1954-56.
- ALCION**—47 ft. A Class sloop, built from Monk designs by Chappel Boat Works in 1947. Owned by Mr. McGregor 1947 to 1950, M. Young 1950 to 1953, L. A. Watts 1954 to 1959 and by Colin D. Campbell from 1959 to date.
- AMBERJACK**—32 ft. PC sloop, Kettenburg design, built Vancouver Shipyard 1946 for Temple H. Wright. Owned by Stu Foley 1948 to 1951, D. M. MacDonald 1951 to 1962; he circumnavigated Vancouver Island in her.
- AMITA**—48 ft. 8 Metre sloop, Fife of Fairlie design, built 1930 on Clyde. Imported by Stan Davies 1954, was flagship for Commodore Davies in 1961. Sold to F. K. Dennison and Sven Rasmussen 1961-65.
- ANN**—B Class sloop owned by J. H. Buchannan 1949-.
- APACE**—41 ft. BB Class sloop, owned by J. Bowron 1956 to 1958.
- AQUILLA** ex **WILDCAT**—26 ft. Hi-Ho Class sloop, Halliday design, built by Taylor Shipyard. Owned by W. J. Polglase 1958 to 1960.
- ARGONAUT**—30 ft. sloop. Owned by C. R. Fogal 1957 to 1960.
- ARIEL**—29 ft. B Class sloop, designed by J. Alden, built at Halifax, N.S. Brought out by Cedric Dill 1946, owned by Lorne Kyle 1948 to 1954, E. H. Killam and M. H. Moan 1963 to date.
- ARIKI**—30 ft. Spencer Class sloop, designed by Halliday, built at Boeing's Shipyards, Vancouver, in 1937 for R.V.Y.C. syndicate. Owned by C. J. Dill 1938 to 1941.
- AUDAX**—29 ft. Dragon Class sloop, Johann Anker design, built in Norway. Imported by Ken G. Clark 1961 and raced consistently to date.
- BARRACOUTA II**—35 ft. B Class sloop, design by Boyce, built Chappell Yards. Owned by Wright Chappell 1948-51, K. J. McRae 1951-53, H. Herlihy 1954-60.
- BALLERINA**—29 ft. Dragon Class sloop, Johann Anker design, built in Norway. Imported by J. S. Smith 1962.
- BENORA**—C Class sloop, built by Harry Herlihy in 1938, who sailed her till 1943 when sold to Gus Ortengren, who sailed her till 1947.
- BENORA II**—36 ft. L36 Class sloop, Lapworth design, built for H. Herlihy 1960.

- BLOWFLY** ex **MOLLIE BONN**, ex **OLE**, ex **TWO BITS**—J. Anker design, built by Aage Birch, Humblebaek, Denmark. Imported 1956 by Jorgen Baers of Victoria, owned by H. Horne 1957-62, A. W. Baker 1962-64, and now by H. J. (Johnnie) Burnett of Thetis Island, Gulf Islands, B.C.
- BLUE HERON**—47 ft. A Class sloop, W. G. Roue design, built 1929 at Shelbourne, N.S. Owned by Dr. S. L. Williams 1953-.
- BLUE WAVE**—33 ft. B Class yawl, built by Rodd & Sons, Victoria. Owned by Colin D. Campbell 1950-60.
- BUCCANEER III**—47 ft. A Class sloop, designed by W. G. Roue, built 1929 at Shelbourne, N.S. Brought to Pacific Coast by Bill Smith in 1946, who sold to H. A. Wallace 1948, owned by Russell K. Baker 1956-60, Vic Grimson 1961-.
- BUCCANEER V** ex **GWEN**—34 ft. yawl, built 1939 at East Boothbay, Maine. Brought to Pacific Coast by Mr. Bill Smith and sold by him to Fred O. Mills 1945, who sold to Vernon and Evelyn Kirkby 1951. Mr. Kirkby changed her name to Buccaneer V and still sails her.
- BRIS**—31 ft. sloop, designed by Von Hellesborg and built in Denmark. Brought to Pacific Coast by Sven Rasmussen in 1956, who sailed her till 1961 when sold to J. S. Motherwell in 1962, who still owns her.
- CAM** ex **LADY NAN**—29 ft. Dragon Class sloop (first Dragon in Canada, and numbered D KC1), designed by J. Anker, Norway. Imported by W. H. (Bud) Day in 1951. Owned by J. P. Leslie 1956 and from 1957 to date by Jack Shepherd.
- CAMBRIA**—30 ft. B Class sloop, designed, built and owned by W. E. (Bill) Cunningham 1948 to date.
- CA VA** now **TRIM**—38 ft. 6 Metre sloop, built 1938 in Denmark. Imported 1953 by Phil and Sid Miller.
- CAVALIER**—29 ft. sloop, designed by Roger de Quincy and built in St. George Yard, Walberswick, England, in 1953. Imported 1955 by Capt. B. L. Johnson and still sailed by him.
- CIRRUS**—34 ft. ketch, designed and built by Ray Delaplace 1961.
- COHO**—35 ft. sloop, designed by J. Brandlmayr Ltd., built by Spencer Boats Ltd. in 1962. Owned by J. Brandlmayr and sold in 1963 to Mr. R. Glube, Royal Nova Scotia Yacht Squadron, and re-named Rochelle II.
- COMTESSA**—32 ft. Seafair sloop, designed by Ben Seaborn. Owned by Stu Foley 1962 to date.
- CONCERTO**—48 ft. 8 Metre sloop, designed by Fife of Fairlie, built on the Clyde in 1937. Imported from Scotland by Cedric Gyles 1955. Owned by Bob Ross 1956 to 1963, A. R. Booth 1964-.
- CORAL REEF** now **PENELAKUT**—46 ft. sloop, designed by L. Ben Seaborn, built Vancouver for A. W. (Art) Way 1959, who sailed her till 1963. Bought by R. D. (Bob) Ross in 1964.

- CHERE AMIE**—28 ft. sloop, designed by T. Halliday and built at Taylor Boat Works for Dr. J. C. Grimson in 1939, who sailed her till 1950.
- CONDOR V**—30 ft. B Class sloop, designed by R. H. Richards and built at Pelagic Yard, Victoria. Owned by J. S. Motherwell in 1964.
- DELPHIN**—40 ft. cruiser 8 Metre sloop, designed by A. C. Robb and built 1952 at Shandon, Scotland. Imported by A. W. (Art) Way 1956. Owned by E. Chisholm 1958-1962, T. W. Donovan 1963-1965, sold to Capt. R. Oliver 1965.
- DIANA**—29 ft. Dragon Class sloop, designed by J. Anker, Norway. Owned 1956-57 by J. Vangolen.
- DOLPHIN II**—35 ft. sloop, designed by Boyce, built by Chappell Boat Works. Owned by Wright Chappell 1950, sold to Harry J. Bird in 1952, who sold to Cardo B. Smalley 1953. Owned by John Grubbe 1956 to 1963.
- DOROTHY**—B Class sloop, designer and builder unknown. Owned by G. W. Burnett 1948 to 1956.
- ELOMAR**—26 ft. Hi-Ho Class sloop, designed by T. Halliday, built at Taylor's Boat Yard 1940 for J. M. Kerr, who sold to L. A. Watts in 1945. Owned by Dr. Hugh Ross from 1948 to date.
- ELUSIVE**—34 ft. Roedde Class sloop, designed by Halliday, built by Taylor Boat Yard for W. R. Morrow in 1948, who sailed her till 1956. Owned by K. Y. Lochhead from 1957 to 1964.
- ERRANT I**—26 ft. Hi-Ho Class sloop, designed by Halliday, built by Tom Taylor Boat Yard. Owned by Keith C. Middleton from 1948 to 1961. Sold out of club.
- ESCAPEE**—39 ft. cutter, built by Talbot-Lehman, Sydney, N.S.W. in 1940. Owned by Phil (Phip) Brock 1948 to 1950, C. Patey 1950 to 1957, H. J. Burnett 1957 to 1963, R. Sykes 1963-.
- EVERYWHERE**—26 ft. Hi-Ho Class sloop, designed by Halliday, built at Taylor Boat Yard. Owned by R. Vittery 1948, C. Campbell 1956-.
- FAEM**—36 ft. L36 Class sloop, designed by Lapworth, built Vancouver for D. and M. Findlay in 1961.
- FAIR LADY II**—32 ft. Seafair Class sloop, designed by Seaborn, built Vancouver 1960 for A. C. Loach.
- FANTASIE II**—34 ft. Roedde Class sloop, designed by Halliday, built by T. Taylor for Jack G. Williamson in 1947. Owned and sailed continuously by Jack and Olive Williamson to date.
- FINTRA II**—34 ft. sloop, built in 1933 at Fairlie, Scotland. Owned by Ortengren and Granger 1954 to 1956.
- FISKA**—30 ft. schooner, built at Halifax, N.S. Owned 1946 by Miklos Senyi.
- FLEET FAIRY**—33 ft. sloop, designed by Uffa Fox, built at Cowes, Isle of Wight. Owned by E. D. Stone and Jack Cribb 1952, since then by E. D. (Doug) Stone.

- FLYING WALRUS**—26 ft. sloop, owned by I. J. Davidson 1951-53, R. D. Ross 1954-1955, and E. N. R. Elliott from 1956 to 1960.
- FOIL**—29 ft. Dragon Class sloop, designed by Anker, built in Norway. Owned by Mrs. Jill Sims (nee Biller) 1959 to date.
- FULMAR**—48 ft. 8 Metre sloop, designed by Fife of Fairlie, built 1930. Imported by Charles Bayne 1954, who sailed her till 1956 when sold to Dr. J. E. Balmer, who still sails her.
- FUNDY II** ex **SHANGRA-LA**—26 ft. Hi-Ho Class sloop, designed by Halliday, built and owned by Sid Humphries 1941. Sold to Ned Ashe, Victoria, 1948, who sold her to Walter Walsh, 1948. Owned by K. M. Lightbody 1952 to 1954, C. S. Walker 1956 to date.
- GANESSA**—28 ft. C Class sloop, designed by Halliday and built by J. A. Longley in 1934, who sold her to A. W. Nyblom in 1938. "Nye" sailed her actively till 1954. Owned 1955 by Stu Watts. Terry Towns owned her 1955 to 1957.
- GABRIELLE II**—48 ft. yawl re-rigged 1964 to sloop, designed by K. H. Reimers, built 1947 at Hastholmsvarvet, Sweden. Imported by P. R. Sandwell in 1958 and sailed by him to date.
- GEORGE KITAMIKE**—38 ft. sloop, built Vancouver. Owned by Hamish Davidson 1962-.
- GINI II**—32 ft. sloop, owned by Ian Ross 1962-.
- GOLDEN HIND III**—37 ft. 6 Metre sloop built by Morgan Giles Ltd. in 1948 at Teignmouth, Eng. Owned by Capt. M. G. Corbeil 1955, and from 1955 on by Lorne S. Kyle.
- GOMETRA**—43 ft. sloop, designed by Milne, built on Clyde. The famous "Gold Ship" (see story elsewhere in History). Brought to Pacific Coast by J. G. (Gus) Ortengren 1948. In 1950 Ken Glass and E. J. Palmer owned her, and in 1953 Elmer J. Palmer, who still sails her.
- GWEN** ex **BUCCANEER**, now **BUCCANEER V.** (see).
- HALCYON II**—35 ft. cutter, designed by Monk, built 1949 by Nicholson, Victoria. Owned by T. T. (Terry) Towns 1957 on.
- HAWK**—47 ft. Bird Class sloop, designed by W. G. Roue, designer of the famous Bluenose, built 1929 at Shelbourne, N.S. Brought to Pacific Coast 1946 by J. C. (Jim) McPherson who sailed her until 1956, when sold to Ralph Farris who still owns her.
- HAZEL MAID**—39 ft cutter, designed by Robt. Clark and built at Shoreham, Eng. Imported in 1957 by R. H. (Rollie) Ellison, who still sails her.
- HECATE**—36 ft. 6 Metre sloop, designed by Nicholson, built in Great Britain. Imported by Sandy Martin 1954 and sold to Seattle 1958.
- HI HO**—26 ft. C Class sloop after which the Hi-Ho Class was named. Designed by Halliday and built by Tom Taylor for George A. Cran in 1938. Sold to M. J. (Mike) Lucas in 1951, who sold her out of the club in 1957.

- HILMAR**—22 ft. D Class sloop, owned by Claude and Eileen Hill 1941, J. K. Sloan, S. Burke and D. A. Sloan 1946-51, H. W. Eckman 1951-53, Ted Suttle 1953-.
- HULDRA** ex **KAREN WELLS**—25 ft. sloop, built at Poole, Eng. Imported 1959 by Per T. Christoffersen, who still sails her.
- HYMAC**—34 ft. Roedde Class sloop, designed by Halliday, built by Tom Taylor for Dr. Robt. McCaffery in 1948, who sold her to Stan Davies in 1951. Sold to N. S. Vallance 1954, who sold her out of the club in 1958.
- HALF MOON**—26 ft. C Class sloop, owned by Hamish Davidson in 1946 and L. G. D. Fraser 1947-1955.
- IDYLOURS**—29 ft. C Class sloop. Owned by Dr. Jack MacMillan from 1952-55, Lloyd Campbell from 1956 to 1958.
- ISHBELL**—22 ft. sloop, owned and sailed by Justice Sidney Smith.
- JENETTA**—71.5 ft. 12 Metre sloop, designed by Alfred Mylne for Sir William Burton in 1938, built 1938-39 by Bute Slip Dock Co., Isle of Bute, Scotland. Bought in 1953 by D. P., F. W. and Victoria M. Urry when on a visit to the U.K. Converted to ketch rig by the Urrys in consultation with designer Robt. Clark and next season brought to Vancouver on deck of freighter. On the death of D. P. Urry in 1961 she has been owned and sailed by F. Wavell and Victoria M. Urry to date.
- JESTER** ex **HEATHER VI**—36 ft. L36, designed by Lapworth, built 1959 by Tom Taylor for J. Innes. Owned by S. B. Watts 1961 to date.
- JUNO II**—37.5 ft. 6 Metre sloop, designed by Nicholson, built at Gosport, Eng., in 1948. Imported by R. W. R. (Bob) Day in 1955, who sold her to D. F. (Denny) Wotherspoon 1956, who sold to the U.S. 1963.
- KRIS**—29 ft. Dragon Class sloop, designed by Anker, built in Norway. Owned by R. W. Butt, K. Downey and D. Skibbe 1964-.
- KANTAKI**—32 ft. cutter, owned by D. Barraclough 1964-.
- KAINUI**—25 ft. sloop, owned by B. S. Lowe 1961-.
- KAISUN II**—38 ft. sloop, built by Tom Taylor for Stan Davies in 1961.
- KALLISTE**—28 ft. sloop, designed by Laurent Giles & Partners Ltd., built 1938 at Lymington, Eng. Imported by H. Wrohan in 1947 and sold to Norm Park in 1954, who still sails her.
- KINI**—37.5 ft. 6 Metre sloop, designed by McGuier, built on the Clyde in 1937. Imported by J. D. Maitland, P. V. O. Evans, W. G. Dolmage and L. B. Culter in 1954. Bought by Walter Sturdy in 1958, who sold her out of the club in 1959.
- LEMOLO**—36 ft. Evergreen Class sloop, built in New Westminster 1963. Owned by Hugh P. Brady to date.
- LADY NAN**—See Cam.
- LALONGA**—30 ft. C Class sloop, designed by R. V. James, built by James for Cardo B. Smalley in 1958, who sailed her till 1960.



- LONG GONE**—36 ft. L36 sloop, designed by Lapworth. Owned by J. G. Innes 1961-.
- LADY LUCK**—30 ft. Spencer Class sloop, built at Boeings Shipyard 1937 for R.V.Y.C. syndicate, designed by Halliday. Ruffed to A. C. Taylor 1937.
- MARCELLE II**—32 ft. sloop, designed by Halliday, built by Frank E. Godwin in 1950 and owned by him to date.
- MARCHESA** ex **CAMIRAM**—32 ft. Seafair Class sloop, designed by L. Ben Seaborn, built for Mackenzie Bowell in 1956. Owned by G. A. Martin from 1957 to date.
- MAREDEA**—36 ft. L36 class sloop, designed by Lapworth, built for R. G. Lundy 1959 to 1963. Art Way 1964 to date.
- MARY BOWER**—49 ft. cutter, designed by Robt. Clark, built in Solent Shipyards, Eng. Imported by K. J. (Ken) McRae 1955 and sailed by him till 1962, when sold to J. V. Long.
- MASKEE**—29 ft. Dragon Class sloop, designed by Anker and built in Norway. Owned by G. Horder 1957 to 1960.
- MISS LEE**—34 ft. Roedde Class sloop, designed by Halliday, built by Tom Taylor for L. B. Culter 1948. Sold to T. L. Daniels 1952, who sold her out of the club in 1956.
- MOLLIE BONN**—See Blowfly.
- MARLIN I** now **VOGAD I**—30 ft. Spencer Class sloop, designed by Halliday, built at Boeing Shipyards by R.V.Y.C. syndicate. The winner of this ship was Bob E. Cromie in 1937. He sold to Jack MacDougall.
- NEPTUNE**—28 ft. C Class sloop, designed by Laurent Giles & Partners Ltd. of Lymington, Eng., and built in Kaj Christensen Yard, Vejle, Denmark, in 1960. Imported by J. V. and Alice Christensen 1961 and still sailed by them.
- NERITA**—C Class sloop owned by W. H. Alcock in 1938.
- NIKE**—29 ft. Dragon Class sloop, designed by Anker, built in Norway. Owned by R. J. Casson and S. Bowman 1960, and by R. J. Casson 1965.
- NOVARA**—28 ft. S28 sloop, owned by J. Brandlmayr 1959-60.
- NUTMEG**—36 ft. L36, designed by Lapworth, owned by W. L. Moore 1957-1959.
- NYON** ex **TRIMA**—36 ft. L36, designed by Lapworth, built by T. Taylor, Vancouver.
- OHO**—39 ft. sloop, designed by Olin Stevens, built New Westminster in 1948 for Percy R. Burr, who still owns her.
- ONNA**—33 ft. sloop, owned by P. R. Sandwell 1955 to 1957.
- OONAH**—34 ft. sloop, owned by Evans Wasson 1956 to 1962. Owned by Dr. Jack MacMillan since 1963.
- ORM**—29 ft. Dragon class sloop, designed by Anker, built in Norway. Owned by J. Fleming 1961 and in 1962 by C. Jukes.

- PALADIN**—29 ft. Dragon sloop, designed by Anker, built by Borensen of Denmark in 1938. Owned by T. I. Hughes 1961 to 1962 and by Dr. C. D. Helmer in 1964.
- PANDORA OF RHU**—48 ft. 8 Metre sloop, designed by Sir T. C. Glen Coats, built on the Clyde in 1938. Imported by E. R. R. Field in 1954, sold to D. P. Gray 1958, who sold to Jack Sloan 1961.
- PINK CLOUD**—40 ft. Newporter, cutter. Owned by Gwynne Austin, non-resident member in Seattle, 1963.
- PENELAKUT**—See Coral Reef.
- PUFF** ex **BALLOCHMYLE** ex **TWO BITS**—29 ft. Dragon Class sloop, designed by J. Anker, built by Aage Birch, Humblebaek, Denmark. Owned 1961-1963 by Dr. T. V. Jones, in 1964 by Rob Stewart, and in 1964 by John J. West.
- RESTLESS**—23 ft. yawl, designed by Foster, built in Vancouver. Owned 1946 by Dr. J. Scott Baxter, in 1947 by W. Campbell, 1948 to 1955 by D. C. B. Duff.
- REVERIE**—45 ft. cruising yawl, built at Assam, India. Sailed out from U.K. by Rev. John Antle in 1941, who owned her till 1948. Owned by C. Bayne in 1949, and by Dr. J. Balmer from 1951 to 1955.
- ROMAYNE**—53 ft. ketch, brought from Europe by Ed. Chisholm in 1956, who sailed her till 1959.
- RUNA**—30 ft. sloop, owned by R. F. B. Taylor 1957 to date.
- REBEL**—26 ft. C Class sloop, owned by Roy Anderson 1943 to 1958.
- RRIENA**—26 ft. Hi Ho Class sloop, designed by Halliday, built by Taylor for K. G. (Ken) McCandless in 1938.
- SANRONAN**—28 ft. sloop, owned 1960 by W. F. Kent. Ian Rogers owned in 1965.
- SARCEE** ex **KO NO MAURI**—32 ft. sloop, owned by C. Bailey 1961 to 1965.
- SERAPIS**—36 ft. L36 Class sloop, designed by Lapworth and built by T. Taylor and Pieter Rook in 1963 for A. J. F. Forsyth.
- SERENDIPITY**—28 ft. sloop, designed by Herreshof, built by Tom Taylor for Dr. W. J. Polglase in 1962.
- SIR RON**—30 ft. Spencer Class sloop, designed by Halliday, built at Boeing's Shipyards, Vancouver, in 1937 for R.V.Y.C. syndicate. Owned by J. D. Maitland 1938-1940.
- SKOAL**—26 ft. aux. sloop, designed by Aage Utzon, built in Denmark 1938. Owned by W. D. Kinsey 1965.
- SPIRIT**—66 ft. sloop, designed by Monk, modified by H. A. Jones, built Vancouver Shipyards in 1946 for Harold A. Jones, who sailed her till 1955. Now owned by Norman and Beverly McCarvill.
- SPRAY**—29 ft. Dragon Class sloop, designed by Anker, built in Norway. Owned 1960-1962 by John Fleming, by C. A. Jukes in 1963.
- STAGHOUND** ex **SHIRLEY JANE**—40 ft. motor sailer, built by E. F. (Jack) Cribb in 1954, who sold to J. M. (Ace) Lindsay in 1956,

who sold to George and Bunty Donaldson in 1958, who still own her.

**STROMBOLI**—29 ft. Dragon Class sloop, designed by Anker, built Vancouver Shipyards in 1961 for Temple H. Wright. Sold in 1963 to C. Bayne, sold to Seattle 1964.

**SWALLOW**—47 ft. Bird Class sloop, designed by W. G. Roue, built 1929 at Shelbourne, N.S. Brought to Pacific Coast by J. Vans MacDonald in 1946, who sailed her for several years before selling her to Honolulu.

**SERENA**—32 ft. PC sloop, designed by Kettenburg, built at Vancouver Shipyards 1946 for J. A. Longley and Dr. H. G. Baker, who owned her till 1949. Owned by Mrs. V. Fox in 1952 and C. (Chuck) Bayne 1953 and 1954.

**SUNDOWNER** ex **ANCHORITE**—40 ft. BB Class yawl, designed by Knud Riemers, built Posnam, Costa Rica, and Wilmington, Calif. in 1959. Owned by P. M. and D. L. Amcotts, non-resident members, Kaneohe, Hawaii.

**SANDERLING**—36 ft. L36, designed by Lapworth, built by Taylor for Art and Jean Meakin in 1964.

**SIKI**—24 ft. C Class sloop, owned by Chris Justice in 1964.

**TAHUNA**—C Class sloop owned in 1938 by Arthur Cox.

**TAI SHAN**—29 ft. sloop, owned by H. N. Ellis 1951-1957.

**TJEP**—29 ft. Dragon Class sloop, designed by Anker, built in Norway. Owned by J. Barltrop 1955-1957 and R. F. Burgess from 1958 to date.

**TOM BOY II**—34 ft. Roedde Class sloop, designed by Halliday, built by Taylor for T. W. Baird in 1948, who sailed her till 1950. Owned by H. G. Barks 1951-53, A. G. Shockley from 1954 to date.

**TOROA**—32 ft sloop, owned by Pete and Audrey Rees 1958 to date.

**TREVEDA**—34 ft. Roedde Class sloop, designed by Halliday, built by Taylor for Len Murrell in 1947. Sailed consistently by Len to date.

**TRICIA**—36 ft. L36 Class sloop, designed by Lapworth, built by Tom Taylor for J. Pat Leslie in 1958, who still sails her.

**TROUBADOUR** ex **THETIS**—65 ft. yawl, built by Abeking & Rasmussen in Bremen, Germany, 1924. Imported by Philip D. Graham in 1958, who sailed her actively till 1965, when sold to California.

**TWO BITS**—See Puff.

**TSOLUM**—28 ft. C Class sloop, designed by Mower, built by F. Thompson, who sailed her till 1947 when sold to H. J. Burnett, who sold to M. J. Lucas in 1957. Sold to Victoria in 1960.

**TIFFANY**—40 ft. BB Class yawl, owned by John Bowron 1964 on.

**TRAMONTANA**—28 ft. S28 sloop, owned by S. deKeserdy 1959-1961.

**TRIM** see **CA VA**

**VELADA**—36 ft. L36 Class sloop, designed by Lapworth, built by Taylor for John Grubbe 1963.

**VELARIS**—48 ft. A Class sloop, designed by Halliday, built at Crofton, V.I., by W. H. Alcock in 1953. Owned by L. H. (Lol) Killam 1960 on.

**VELEDA**—36 ft. L36 sloop designed by Lapworth. Built 1963 by Taylor for John Grubbe.

**VOGAD**—34 ft. Roedde Class sloop, designed by Halliday, built by Tom Taylor for H. R. (Bert) Tupper in 1947, sold to Dr. Jack MacMillan in 1956, who sold out of the club in 1962.

**VOGAD I** ex **MARLIN I**—30 ft. Spencer Class sloop, designed by Halliday, built at Boeing's 1937 for R.V.Y.C. syndicate and won by R. E. Cromie, sold to Jack MacDougal. Owned by Bert Tupper 1939.

**WAYFARER II** ex **MOSCA**—32 ft. sloop, designed by Rodd, built at Canoe Cove Shipyard for Dr. D. C. B. Duff in 1955, who still owns her.

**WESTWIND**—28 ft. C Class sloop, designed by P. Rhodes, built by Taylor in 1960 for Cardo and L. Smalley.

**WHEREAWAY**—37 ft. sloop, owned by Don Smith 1957.

**WHANI WHANI**—29 ft. motor sailer, owned by C. F. Harley 1962 on. Non-resident member.

**WINSOME III**—36 ft. L36 Class sloop, designed by Lapworth, built by Taylor for Ches. L. Rickard in 1958, who still sails her.

**WINSOME TWO**—28 ft. C Class sloop, owned by Stanley Davies 1938.

**WINSTON**—36 ft. Evergreen Class sloop, built at New Westminster in 1948 for Capt. B. L. Johnson, who sailed her till 1955.

**WADA**—32 ft. ketch, designed by G. F. Waddington, built in Sidney, V.I., in 1929. Owned by T. B. Edwards from 1939 to 1949. Sold to Acapulco.

**YAHDA**—30 ft. C Class sloop, designed by E. Monk of Seattle, built by Woodruff & Simmonds Ltd., Vancouver, for Chris McGregor in 1949. Owned by H. Hollick-Kenyon from 1953 to 1958.

#### **THUNDERBIRDS—26 ft. sloops**

**Jehara**—H. and J. Dye, 1962-.

**Kalara**—Larry Walters, 1962-.

**Gypsy**—A. R. Booth and C. Hood, 1962-.

**Qa-Yel**—Bob and Jo Jarvis, 1964-.

**Rota**—Dr. W. Otto, 1962-.

**Swahlee**—Jim and Liba Tyherst.

**Tiki III**—Russell and Marion Baker, 1964-.

#### **CAL 20s—20 ft. sloops**

**Blowhard**—Michael Power, 1963-.

**Cal-Tiki**—J. Don Black, 1963.

**Mary Hester**—Dr. Mac MacPherson, 1964-.

**Sinbad**—Sam and Margaret Toy, 1964-.

## R.V.Y.C. SAILBOATS

Name	Sail No.	Length	Rig Type	Owners
After Me			Sloop	D. Purdie
Ahmic		34'	Sloop	Doug & Anne Courtmanche
Alcion	415	46'	Sloop	Douglas Hall
Alii Nui		22'	Sloop	Victoria Cox
Allegra	241	42'	Sloop	John & Beverley Louie
Andante	9443	51'	Sloop	Art & Nora Way
Applecheeks		31'	Sloop	Dr. H. M. Bell
Aquarius		26'	Sloop	Alex & Ruth Chisholm
Aralon	768		Sloop	R. C. Nelson
Ariel	411	29'	Sloop	Mary Moan
Ariel V	175	39'	Sloop	Ken & Kathleen Lochhead
Artu		26'	Sloop	Ian G. Clements
Ashanti	441	25' 9"	Sloop	Vernon & Pam Forster
Avalon		30'	Sloop	Richard & Louise Nelson
Baron Rouge		37'	Sloop	John & Liz Armour
Beluga		25'	Sloop	Fenner & Stephanie Douglas
Benora II	461	36'	Sloop	Harry & Agnes Herlihy
Blue Heron	399	47'	Sloop	Dr. Seriol & Wilma Williams
Blue Mist		46'	Cutter	Gordon Crebbin
Bluey	97007		Sloop	D. Findlay
Bob-O-Link		28'	Sloop	E. Wasson
Cala		23'	Sloop	Bob & Mary Laird
Calabash		30'	Sloop	Claude & Sandra Cronhelm
Cal-Tiki	157	20'	Sloop	J. W. Gill
Cambria		31'	Sloop	Bill & Effie Cunningham
Cavalier	49	30'	Sloop	George H. Halls
Celeste		58'	Sloop	George Scrimshaw
Centaur	CR205	26'	Sloop	Foster K. Dennison
Cerce		34'	Cutter	Carl Kenning
Ceres		25'	Sloop	Dr. James M. Ritchie
Chico Viento	9423	32'	Sloop	Eric & Charlotte Sandberg
Cirrus	105	34'	Ketch	Ray & Hazel Delaplace
Claire d'Lune		45'		Dr. Wm. H. White
Cloudrace	239	32'	Sloop	Wm. Miles
Coho	711	51'	Sloop	John & Pat Brandlmayr
Comtessa	117	32'	Sloop	S. G. Foley
Copepod		21'	Sloop	Tom Killam
Cresset	3	40'	Cutter	Gerry & Dorina Palmer
Crusader	711	51'	Sloop	Ken & Eunice McRae
Diomedea		36'	Sloop	Dr. D. M. Warner
Doran II		37'	Sloop	Alvin & Eileen Narod
Driftwinds		38'	Sloop	D. H. Burnett
Driver	409	61'	Sloop	Philip & Joan Graham
Drummer Boy	439	34'	Sloop	John Dunfield
Ealasaid		32'	Sloop	R. F. Morris
Eiliah Mor	V24-12		Sloop	R. Mackay
Elsinore		30'	Sloop	David Goldie
Elusive	345	34' 6"	Sloop	Dr. Ronald & Marcia Boyd
Faem	571	36'	Sloop	Keith & Anne Thomson
Fantasie	9	34'	Sloop	Jack & Ollie Williamson
Flame		48'	Sloop	Warren & Patsy Nesbit
Fleet Fairy		33'	Sloop	Douglas & Alma Stone
Fulmar	23	48'	Sloop	Steve & Stephanie Vagvolgi
Furiant		40'	Yawl	Dave & Marie Moffet
Gabrielle III	401	53'	Sloop	Dick & Agnete Sandwell
George Kitamike	119	38'	Sloop	Hamish Davidson
Gini II	229	32'	Sloop	Ian & Joyce Ross
Glomerulus		31'	Sloop	J. D. Longley
Golden Hind III	13	37'	Sloop	Lorne Kyle
Gometra	5	43'	Sloop	R. W. Butt
Greybeard	9999	73'	Ketch	Lol & Rose Killam
Haida Raven	705	31'	Sloop	William Wagner
Hawk	9001	47'	Sloop	Bettie Farris
Huba		28'	Sloop	G. K. D. Stuart
Hyak	11	32'	Sloop	Bill Mahy & Bonar & Elaine Davis
Jenetta		71'	Ketch	Wavell & Victoria Urry
Jester	129	36'	Sloop	Stuart & Wendy Watts
Jeunesse	235	35'	Sloop	Paul & Bette Coté
Jivaro			Sloop	W. C. T. Edwards
Jolly Oily	303	28'	Sloop	Vern & Oily Ruskin
Kainui		25'	Sloop	Brian Lowe
Kala	15	28'	Sloop	Dr. Bill & Betty Alto
Kallista	35	28'	Sloop	Norm & Pat Park
Kana-O	413	26'	Sloop	P. H. White



## R.V.Y.C. SAILBOATS

Name	No. Sail	Length	Type Rig	Owners
Kandah	427	37'	Sloop	Chris & Helen McGregor
Kantaki		32'	Cutter	Denis & Rita Barraclough
Keewaydin II		41'	Sloop	H. O. Murphy
Kimchow		40'	Sloop	Douglas & Helen Gardiner
Kimje	177	42'	Sloop	Jim & Joy Eastman
Kotare		20'	Sloop	James & Gertrude Gardiner
Lara	125	30'	Sloop	Ken & Alice Clark
Larus		31'	Sloop	Gordon Tener
Lollipop	225	30'	Sloop	Hunter Vogel
Long Gone		42'	Sloop	Jim & Shirley Innes
Loon	445	34'	Sloop	Fank Hahn
Lur		30'	Sloop	John & Judy Burnett
Lutra		30'	Sloop	Harold Wrohan
Ma Coeur		28'	Sloop	R. J. Miller
Ma Coeur	501		Sloop	Bob & Marg Miller
Maid Silya	301	40'	Ketch	Elmer & Katharine Palmer
Mary Bower	7	49'	Sloop	John & Evelyn Long
Mary Hester	217	20'	Sloop	Dr. Mac MacPherson
Maverick III	567	32'	Sloop	Bas & Gillian Cobanli
Mintaka		30'	Sloop	Ted & Daisy MacDonald
Mir	9417	76'	Ketch	George W. O'Brien
Molly Hogan II		30'	Sloop	Dana & Norma Ramsay
Moomba	429	32'	Sloop	Doug & Joan Sudbury
Nantuk	179	35'	Sloop	Maury & Mary-Margaret Young
Neechiemose		47'	Ketch	Terry & Ann Towns
Neptune		28'	Cutter	Jack & Alice Christensen
Nighean Alvin		30'	Sloop	Thomas & Gladys Cartmill
Nona		25'	Sloop	Don & Jean Black
Ole II	223	35'	Sloop	Bill & Paula Locke
Olympus	359	30'	Sloop	A. J. F. Johnson
Oulja		26'	Sloop	Robert Jr. & Mary-Lou Gibson
Pandora of Rhu	431	49'	Sloop	John Klymak
Paniolo	51	36'	Sloop	Dr. Gordon & Ruth Westgate
Pelekan		26'	Sloop	R. A. Clarke
Penelakut	19	45'	Sloop	Bob & Sheila Ross
Plymouth Girl		25'	Sloop	James & Cynthia Sandilands
Poof		22'	Sloop	G. L. & Dorothy Cran
Porpoise III	397	47'	Sloop	Bill & Kay Killam
Puffin II	561	36'	Sloop	Harvey & Marion Carruthers
Quest III		28'	Sloop	Bob & Bubs Forrest
Rapid	421	37'	Sloop	Ian & Ken Kirkland
Rhubarb	75	30'	Sloop	Robbie & Barbara Brown
Running Shoe		30'	Sloop	John & Betty Jarman
Sabre II		37'	Sloop	Bill & Jill Armstrong
Saeter		30'	Sloop	Craig & Margaret Neylen
Santa Clara		30'	Sloop	Frank & Barbara Bunnell
Sanderling	169	36'	Sloop	Art & Jean Meakin
Saumure		30'	Sloop	Ralph & Marney Brine
Seata		26'	Sloop	T. Slaney
Seawyf	57	35'	Sloop	Peter & Shirley Vida
Second Chance		27'	Sloop	W. F. Dickson
Serapis	103	36'	Sloop	Alex & Margaret Forsyth
Seren		30'	Sloop	D. P. Jones
Serendipity	227	28'	Sloop	J. B. Alexander
Skana	703	31'	Sloop	Alan & Margaret Martin
Smilee		48'	Sloop	Ken McLean
Snow Goose		25'	Sloop	Mary Light
Standfast	437	31'	Sloop	Tony & Sue Liebert
Summer Winds	9777	47'	Sloop	Ed & Louise Prescesky
Sunbird	9447			
Sundance Kid	12		Sloop	B. R. Sibbald
Surfer	207		Sloop	Tony & Margaret Repard
Sweetpea	218	24'	Sloop	Tony & Tee Kingsmill
Sylvia	279	35'	Sloop	Roy F. Hooley
Tabasco		30'	Sloop	David & Bittie Jacox
Tae Ping	491	39'	Sloop	C. Paul Daniels
Tahn	37	26'	Sloop	George & Shirley Mason
Tahuna		33'	Sloop	R. Jerome
Tamar II		33'	Sloop	Stanley & Doreen Heaps
Tehani		24'	Sloop	James Magnall
Tekilome		47'	Ketch	D. E. Holland
Tekilome		37'	Ketch	Douglas & Phyllis Holland
The Roving Eye		28'	Sloop	Gordon & Doris Harris
Tom Boy		34'	Sloop	Alf Shockley
Treveda	405	34'	Sloop	Len & Edna Murrell
Tricia	123	36'	Sloop	Pat & Yvonne Leslie
Unnamed			Sloop	R. Gibson Jr.
Vogad		36'	Sloop	Hugh & Jocelyn MacNeil
Vogad	RI	35'	Sloop	Harry & Jean Fahrni
Westerly Twenty-Five		25'	Sloop	Foster K. Dennison
Whereaway	39	37'	Sloop	Don & Joyce Smith

## R.V.Y.C. SAILBOATS

Name	Sail No.	Length	Rig Type	Owners
Wickaninnish		30'	Sloop	Bill & Karen Kinsey
Windborne II	435	30'	Sloop	Glendon & June Hagerman
Wingsong		30'	Sloop	D. A. V. MacDonald
Winsome III	33	36'	Sloop	David E. Frisby
Winsome IV	701	37'	Sloop	Ches & Win Rickard
Wynsonaire	139	34'	Sloop	T. F. Horton
Yola	425	30'	Sloop	George & Vivian Parsons
Zuna II		37'	Sloop	George Scrimshaw

## MOTOR SAILERS

Dawn Star	42'			Stanley & Muriel Davies
Marcelle	32'	Sloop		Frank & Vera Godwin
Pink Cloud	40'			Gwynne & Yvnn Austin
Staghound	40'	Ketch		George & Bunty Donaldson

## 12 METRES

Endless Summer		Sloop		George O'Brien
----------------	--	-------	--	----------------

## 6 METRES

Ca-Va	KC12	36'	Sloop	Phil & Wynn Miller and Sid & Janet Miller
-------	------	-----	-------	--

## THUNDERBIRDS

Amphritrite	731	26'	Sloop	Sid & Sylvia Wilkinson
Minstrel		26'	Sloop	Tom & Ruby Cram
Orielle	T266	26'	Sloop	Bruce & Jane Sibbald
Qa Yel	211	26'	Sloop	Bob & Jo Jarvis
Scherzo		26'	Sloop	R. K. Glass
Tiki III		26'	Sloop	N. Donaldson
Tiny Bubbles	820	26'	Sloop	W. R. Emerton
Tolowa	67	26'	Sloop	Roger Ovens

## DRAGONS

Antigone	KC95	29'	Sloop	Steve & Anne Tupper
Baaz	KC72	29'	Sloop	Allan Goldsmith
Foil	KC81	29'	Sloop	Colin & Jill Sims
Puff	KC53	29'	Sloop	Fred & Bev Field
Scampie	KC83	29'	Sloop	Ray Casson
Tjep	KC32	29'	Sloop	Bob & Joan Burgess

## SOLING

Agnete	KC68	26'9"	Sloop	Esben Poulsson
Algerias	KC45	26'9"	Sloop	Fred Brodie
Andiamo	KC51	26'9"	Sloop	John Purdy, Adrian Thomson & John Yuill
Chance	KC57	26'9"	Sloop	Bill Dickinson & Claude Maurice
Chicanery	KC34	26'9"	Sloop	Bill & Margo Burgess & Alex Harrison
Highlife	KC35	26'9"	Sloop	Dave Miller, John Ekels & Paul Côté
Lady Meg II	KC70	26'9"	Sloop	Jack & Megan Balmer
Rainbow	KC63	26'9"	Sloop	Bob & Suzanne Brodie
Solan	KC71	26'9"	Sloop	Ron Maitland
Solong	KC32	26'9"	Sloop	Tec & Jacqueline Jones
Signe	KC77	26'9"	Sloop	Lloyd & Arlene Walker
Unnamed	KC81	26'9"	Sloop	C. Van Winckel

## STAR

April	4565	22'8"	Sloop	Vic Baker
Blackfish		22'8"	Sloop	Bruce Andrews
Cephei		22'8"	Sloop	R. N. P. Evans
Gypsy	4720	22'8"	Sloop	Ian & Ken Kirkland
Prudence		22'8"	Sloop	Dave Williams
Totem	2371	22'8"	Sloop	Barney Perry
Windor	913	22'8"	Sloop	Bill & Norma West
Unnamed	5505	22'8"	Sloop	Bruce & Gregory Cline

## LIGHTNINGS

Atrain	6917	19'	Sloop	Fred McMeans
Blue J	8882	19'	Sloop	Ted & Mary Lou Jefferys
Hawk	3253	19'	Sloop	A. Sturgess
Joker	10522	19'	Sloop	J. C. Gilley
Let-It-Be	5146	19'	Sloop	W. P. Wallace
Martini	11645	19'	Sloop	M. Scriabin
Skua	8066	19'	Sloop	Dr. Bill Acheson

## R.V.Y.C. SAILBOATS

Name	Sail No.	Length	Rig Type	Owners
<b>FLYING DUTCHMEN</b>				
Aries	KC56	20'	Sloop	Al Sturgess
Beta	KC72	20'	Sloop	Alan & Eric Drinkwater
Faszination		20'	Sloop	Doug & Jeanette Helmer
I.R.A.		20'	Sloop	Don & Louise Andrew
Qui Echappe		20'	Sloop	Hunt Gordon
Touche II	KC152	20'	Sloop	Bob & Anne Andrew

**GEARY 18's**

Catchup	1114	18'	Sloop	Bill & Alan Cullen
Kelly		18'	Sloop	Kerry Mulhern
Little John	1197	18'	Sloop	Jack & Merelyn McAllister
Stella G	1324	18'	Sloop	Lawrence M. Hall
Tom Jones	913	18'	Sloop	T. B. Anderson

**FLYING JUNIORS**

Anaham	1467	13'6"	Sloop	Mike Robinson
Casey Too	420	13'6"	Sloop	Leslie Rollins
Haida	1494	13'6"	Sloop	Chris Bernard
Havoc	417	13'6"	Sloop	Neil Iverson
Impunity	562	13'6"	Sloop	John & Kay Biller
John B	701	13'6"	Sloop	Peter Bull
Joker		13'6"	Sloop	Patrick Finnegan
Linus II	1488	13'6"	Sloop	Russell Jones
Miss Peach	702	13'6"	Sloop	Brad Reynolds
Pam	318	13'6"	Sloop	John Sloan
Pegasus	413	13'6"	Sloop	Gordon Main
Penny	561	13'6"	Sloop	Bob Ross
Sea Serfer	1570	13'6"	Sloop	Fred Long
Snark	KC1102	13'6"	Sloop	J. Swanson
Wee II	1691	13'6"	Sloop	Bill Kennedy
Wingding		13'6"	Sloop	T. Newmarch
Unnamed		13'6"	Sloop	Sean Donovan
Unnamed		13'6"	Sloop	James Miller
Unnamed		13'6"	Sloop	Colin Baker
Unnamed		13'6"	Sloop	Melanie Hartnell
Unnamed		13'6"	Sloop	Debby Evans
Unnamed		13'6"	Sloop	Bud Miller
Unnamed		13'6"	Sloop	Theo Anglin
Unnamed		13'6"	Sloop	John Yuill
Unnamed	1652	13'6"	Sloop	Roger Dower
Unnamed	KC1095	13'6"	Sloop	J. D. Little
Unnamed	KC230	13'6"	Sloop	T. Delaney
Unnamed	KC1585	13'6"	Sloop	P. D. Everett

**O.K. DINGHIES**

Chip	KC36	13'2"	Cat	Robbie Black
Unnamed	KC22	13'2"	Cat	W. Horner

**ENTERPRISE**

Ecliptic	E-12690	13'	Sloop	John & Diane Ross
Unnamed		13'	Sloop	G. Mann

**MISCELLANEOUS**

High Jinks		11'		Dave Nairn
Nan		12'	D12	Bud Day
Sandpiper		14'	Sloop	P. Fahrni
Sea Wizard		12'		E. B. Hall
Sidewinder			Aquacat-Cat	Peter & Sheila Shuley
Ta'ria		12'	D12	Steve Rendell
Tine		15'	Snipe	Ken & Justine Dakin
Whisper		19'		Norman Collingwood
Unnamed		13'4"		Sean Donovan
Unnamed	KC162		Shark-Cat	W. Edwards
Unnamed		13'3"	Blue Jay	Mary-Clare Chapman
Unnamed	6467		Aquacat-Cat	E. Chisholm
Unnamed	KC5139		Fireball	Don Boyle
Unnamed		16' F'ball	Sloop	R. C. H. Davidson
Unnamed		16' F'ball	Sloop	S. Bayley
Unnamed		16' F'ball	Sloop	D. Purdy
Unnamed		16' F'ball	Sloop	D. Pettigrew

## R.V.Y.C. SAILBOATS

Name	Sail No.	Length	Rig Type	Owners
<b>FROSTBITERS</b>				
Endless Winter	5	9'	Cat	David & Lynett Hendry and Vern Forster (Syndicate)
Unnamed	24	9'	Cat	Robert Burgess
Unnamed	111	9'	Cat	Hamish Davidson
Unnamed	1/2	9'	Cat	Bonar Davis
Unnamed	1	9'	Cat	Ralph Farris
Unnamed	17	9'	Cat	Alex Forsyth
Unnamed	143	9'	Cat	John Hutchinson
Unnamed	155	9'	Cat	F. R. Killam
Unnamed	11	9'	Cat	L. H. Killam
Unnamed	33	9'	Cat	Dr. Tec Jones
Unnamed		9'	Cat	Robert K. Lester
Unnamed	117	9'	Cat	Dr. J. A. McMillan
Unnamed	14	9'	Cat	Dr. M. M. McPherson
Unnamed	13	9'	Cat	Eric Marsden
Unnamed	101	9'	Cat	Phil Miller
Unnamed		9'	Cat	Sid Miller
Unnamed	22	9'	Cat	Len Murrell
Unnamed	102	9'	Cat	Gerry Palmer
Unnamed	36	9'	Cat	Keith Thomson
Unnamed	4	9'	Cat	Ches Rickard
Unnamed	15	9'	Cat	Lloyd H. Walker

**SABOTS**

Mellow Yellow	8'	Cat	J. Watts
Nini	8'	Cat	Niels Anthonson
Smartie Blue II	8'	Cat	W. A. Puckering
Tobias	8'	Cat	Mike Robinson
Toby	8'	Cat	S. Toy
Unnamed	8'	Cat	Kim Alfreds
Unnamed	8'	Cat	Harry Billingsley
Unnamed	8'	Cat	Greg Cline
Unnamed	8'	Cat	David Nairn
Unnamed	8'	Cat	J. Montague



Solings in English Bay — a Dale Lawrence photo



## R.V.Y.C. POWER BOATS

Boat	Owners	Boat	Owners
Aia Kai	George Treit & Bruce Mathew	Griffin III	Beldon Stafford
Alados	John & Beulah Swerdfeger	Halcyon	C. Effinger
Ala Wai	Hal & Mary Alice Johnson	Hatteras	B. Shepard
Alibi III	Roy & Marnie Summerfield	Heatherbel	Dick & Isabel Scott
Anchorite	Clarke & Dorothy Gibson	Henry VIII	Henry & Florence McLaren
Aquillon	A. O. Manson	Hermosillo	Al & Muriel Simpson
Arfrene	Arthur Monahan	Her Nibs	Cliff & Win Walker
Arrow II	Jack & Toni White	Hi Hopes	Pat & Mel Dahle
Ballygally	Clarke & Pat Simpkins	Hilary Elaine	George Percy
Banook	Ed & Lorraine Bowser	Ho Hum	William Rathie
Barbet	Howie & Ellenor Russell	Honey Bear	John & Naida Davidson
Bardonilla	Wilson & Jesslyn Mackin	Honu	Robert Howe
Beausoleil	Gerry & Hazel Thompson	Honu II	Jack & Betty Brown
Betsy Karen	Ray & Betsy Annatt	Hotel	Tom & Doris Douglas
Black Dolphin	Thornton & Bea Grenfell	Humming Bird	Andrew Bernard
Blink Bonnie	John & Evelyn Lock	Idolours I	Maurice Hunt
Bonanza	Jack & Daphne Taylor	Idolours II	Jack & Elsie Kovac
Breezin Thru	Gil & Joan Arnold	I'llaway	Spud & Jeanne Akhurst
Brenda	Stu & Helen Gilmour	Invader	W. Colquhoun
Brenhines IV	R. A. Osborne	Jasmine	F. O. Whipple
Cadenza	John Steede	John Antle II	Ralph & Olive Smith
Caminante	Alex & Dorothy Healey	Jucaro	Hugh & Margo Magee
Campana	Max Bell	Kalamalka	Syd & Blanche Bowman
Canadian Fifer	Dr. J. M. Graham Ritchie	Kanga	Dave & Sheila Rolfe
Cape D'Or	Russell & Larry Marshall	Kim	R. McCarthy
Capesterre	Sid & Muriel Rooney	Kittiwake	Bruce & Janet Allan
Caprice	Bert & Thelma Cruise	Kona Kai	Ken & Bernice McRae
Caramia	Sherman & Hedy Bardach	Kon-Tiki-Too	John & Mary Phillips
Carefree	Doug & Dorothy Welch	K'Shain	Dr. R. Hicks
Caribbean	John & Renate Morgan	Kyanna II	Bob & Audrey Pearson
Caroma	Bob McGregor	La Beverie	Jim & Beverley O'Toole
Carpe Diem	Dick & Eleanor Malkin	La Donna	Don Johnston
Casa Mar	Karl Springer	Latin Lady II	John & Joan Belyea
Cavalaire	Hugh & Nancy Mann	Lazee Gal	J. R. Wilkinson
Cazador	John Van Kleeck	Leilani II	Dick & Doris Smith
Cee Aer	Bob Hall	Leprechaun	Tom & Marjorie McClelland
Cha Cha III	Robert & Suzanne Brodie	Little Jean	C. H. Corkum
Chunky Too	S. H. Wallace	Loafer	A. M. McGavin
Cleodora	Stan & Isobel Morton	Lytescary	Dick & Bea Lewell
Con Dios	John & Peggy Roseborough	Mai Tai	Edith Hackett
Coral Seas	G. Loughheed	Makai	J. O'Brien
Corsair I	Ken & Frances Sulley	Malacandra	Howard & Shirley Bentall
Coryels	and Penn & Mary Lou Taylor	Malampus	B. Curran
Cover Girl	Harry & Vera Milne	Malecite	Bill & Mary Orr
Cox'n I	Tom & Phyllis Hethrington	Marillyce	Hew & Marian Brooke
Coya	T. E. Ladner	Mark III	Nick & Phillippa Carter
Crystal Sea	John & Cecyl Simpson	Marlyn IV	Lloyd Parker
Cul de Sac	Arthur & Helen Christopher	Martlet II	Stanley & Myrna Terry
Dalarna	L. B. Culter	Merri-Lee II	Bruce Harris
Dalkeith Doll	Harry & Pearl Gillespie	Midnight	J. Ouellette
Daphnia	Fred Edy	Minotaur	Charles & Ardy Schultz
De Anza III	J. G. Gould	Miss Emily	E. W. Disher
Deirdre II	Hubie Wallace	Miss Melody	Ken & Jean Davidson
Dione	Frank & Helen Emmons	Molly Brown	Ernie & Pat Anderson
Dolphin Gal	Loring & Robin Foster	Moon Winks II	Ted & Darlene Loftus
Donzi	R. L. DeProy	Mutineer	Alec & Kay Ellett
Dorado	Bill & Beth Wright	My Fair Lady II	Hugh & Rose Libby
Dorlen	J. M. Lecky	My Panacea	Alan & Florence Anthony
Dream Along	Len & Dorothy Sewell	Neo II	Kenneth Dinham
Elanat	Stanley & Ina Guile	Nightcap	George & Elizabeth Cumpston
Eldorado II	Vic & Joan MacLean	Nimba	Winslow & Betsy Bennett
Errant	Jack & Jean Overholt	Niska	Bud & Eileen Garrett
Escapada	Keith & Muriel Middleton	Noreanne	J. Erickson
Evoyn	Trevor & Margie Jordan-Knox	Norsal	Earson & Dorothy Gibson
Fifer	Ken & Barbara Small	Ocean Belle	Bob & Molly Day
Fleetwood	Col. Clarence Wallace	Ocean Oasis	E. E. Arnold
Flight	Bruce & Lois Buchanan	Owaissa	Bob & Grace Orr
Flying Spray II	Ced. & Pat Dill	Omea	Ed and Mildred Dueck
Four Bells	Jack & Stella Gillis	Pacer	A. J. H. MacDonald
Framac	Lyall & Kay Bell	Pamper II	Louis P. Starck
Free Enterprise	Tillie & Tucker Battle	Pamper III	Gunner & Pam Wilson
Friendship	C. H. Naphtali	Pappy San	C. Woodward
Fusilier	Finn & Osa Petersen	Paramount II	Ritchie & Evelyn Nelson
Gibson Gal	Fred & Lorna Clendenning	Peppi II	Stan & Peggy King
Gillcrest	Bob & Barbara Gibson	Pike's Pick	Bill & Ruth Hamilton
Gladson II	Jerry & Barbara Rendell	Plad a	Neil Thomson
Gogama	Paddy & Gladys Morris	Polanesia	Rick Hartnell
Go Go Girl	A. Wm. Everett	Prince	Andrew & Helen Robertson
Golden Hind II	Ronald & Gloria Young	Queen of the "C"	J. B. Costello
Graywing	Arthur & Sylvia Naylor	ReJoyce	Walter Walsh
Green Parrot	Gordon & Joan Wheatley	Rhinegold	Colin & Patricia Ferrie
	Hume & Jane McLennan	Rhodes	Hugh Rhodes & Paul Delaney

## R.V.Y.C. POWER BOATS

Boat	Owners	Boat	Owners
Rhonda L	David Jordan-Knox	Tahini	Wilfred & Ria Buttjes
Riot IV	Jean Runge	Takulli	Doan & Mary Hartnell
Rising Star	G. C. & Sue Murphy	Tangent	Brian McDermott
Robbie Burns	Jim & Isabelle Graham	T Boy Too	Don & Geraldine Cromie
Rockabye II	John & Liesel Maier	Teelee	Ham & Honey Smith
Roma	Fred & Ollie Stow	Tehani	Donald & Amy Baker
Rose Point	Fred & May Fearman	Tempest II	Bob & Adele Sanderson
Rus-Lor	Don & Lee Easton		and Brent & Pauline Brown
San-Dee-No	D. Hnatyszen	Thunderbird	Jack & Doreen Charles
Sandor II	Paul & Joan von Colditz	Tia Maria	Bob & Becky Fraser
Sandpiper V	Cliff & Patricia Billingsley	Tikh Hai	Gerald Hamilton
Sandra G. II	Jack & Nora Steede	Ti Mu	Ted & Betty Cruise
Saronia	Jack & Jean Halse	Tinker Toy	R. J. Cullen
Savory Seas	G. A. Christopher	Tiny Bubbles	W. Emerton
Saxony	Andrew & Joan Saxton	Tlee Ha	C. Elliott
Schatzi	J. Mawhinney	Tom's Folly	T. B. Read
Scimitar	Fred & Peggy Dalgarno	Tovarich	Jack & Elizabeth Gibbs
Sea Breeze	Bob & Dolly Day	Trimaran	L. A. Bates
Sea Home	Fred & Winnifred Warriner	Triton	Dexter & Joan Stockdill
Sea Lark	Doug & Bunty McPherson	Truant	Dana Delaplace
Sea Lure	Ron & Ann Proctor	Tsona	Jack & Shirley Williamson
Seamail	R. R. Maitland		and Dave & Nita Manning
Seaplay II	Robert & Christine Anderson	Tzinquaw	Bill & Joyce McLean
Seashaker	Ken Rooney	Ubique I	Claude & Sue Thicke
Sea Star	Harold & Margaret Gale	Ursa Minor	Emile & Ursula Badre
Seatex	W. H. Mitchell	Valiant V	Bob & Lyda Kerr
Sea Truck	John & Phyllis Dunn	Vandal	Les & Babe Simmers
Seaward	Ralph & Irene McGregor	Vitabella I	Len Boulthbee
Senioriva	Frank & Emily Griffiths	Vitabella IV	George & Hesper Glanville
Shaman	Tom & Marjorie Bridge	Wahkeena	Jack & Alice Harrison
Simoon	M. J. Lucas	Wainani	Bill & Edith Hunter
Sky Lark	T. Meagher	Wakala	Gladys & John Murray
Smitty	Tom & Freda Trapp	Wanderer	Douglas & Jean Maitland
Sonora	Bob & Margaret Thatcher	Wardhaven	Bruce & Rae Ward
Spindrift V	Clark & Phyllis Bentall	Water Dancer	Ross & Velma Whiteside
Starquest IV	George & Lillian Fawcett	Wee Chapy	Hugh & Pat Chapman
Summertime	Angus & Joan Kenning	Wild One	Ronald Russell
Sundance	Geoffrey & Elizabeth Tullidge	Yoko Chan	David Nunn & Arnold Nunn
Surprise	P. C. de Beixedon	13K32676	Owen & Jean Wright
Swi-Ve-Lus	Ray & Mary Whittick	13K35900	Glen & Marjorie Olds
Taconite	Mrs. W. E. (Bertha) Boeing		



General Quarters! — all ahead main engine. — a Dale Lawrence photo

## VESSELS, SAIL &amp; POWER



Yacht Name	Power Sail	Description	Year Book(s) Listing
Abductor	S	Ont. 32	1978 -
Abraxas	S		1979
Abraxas II	S	C&C 39	1980 -
Absentia	S		1974.
Adera	P		1973 - 81
Adgo	S	C&C 30	1982 -
Adios	S	Soling	1974 - 78
Admiral's Choice	P		1973 - 75
Advance	S	C&C 25' Redline	1977 - 84
Adventure	S	San Juan 24	1975 - 78
Adventure II	S	Ont 28	1979 - 83
Adventure III	S	Ont 32	1984 -
Adventuress II	P	47' Cruiser	1980 -
Adversary	S	SJ 30	1978 - 80
African Queen	P	36' Cruiser	1972 -
After Eight	P	45' Grenfell	1982 -
After Me	S	Sloop	1971.
After You	S		1974.
After You II	S	R 26	1975 - 77
Afternoon Delight	S	Cal 27	1979 - 80
Afternoon Delight	P		1978 - 80
Afternoon Delight	S	4.8 Bombadier	1983 -
Afternoon Delight	S	Fireball	1982 -
Afternoon Delight	P	27'	

Yacht Name	Power Sail	Description	Year Book(s) Listing
Agamemnon	P		1985-
Agammenon	S	Cooper 42	1980.
Agena	S	Niagara 31	1981-
Agena II	S	35' Jouet	
Agnete	S	Soling	1970 - 72
Agulhas	S	Fraser 41	1978 -
Ah So Too	P		1974 - 78
Ahmic	S	Cor. 34' sloop	1971 -
Aia-Kai	P		1970.
Aileen J.	P	31' Ennos	1983 - 84
Air Affair	S	Chsr 29	1976 - 77
Akela	S	Niagara 35	1981 -
Ala Wai	P		1965 - 75, 77.
Alados	P		1961 - 74
Alamora	P		1975 - 78
Alandra	P		1972 - 78
Alandra	P	43' Tolly	1983 -
Alberta Bound	S	Choate 44' custom	1981 -
Alcion	S		1974.
Alder	P		1979 - 80
Alegrias	S	West Sail 32	1975 -
Alexandria	P		1978.
Alfie	S	Cor 34	1976 - 79
Alfresco	S	Buc 305	1977 -
Algerias	S	Soling	1970 - 74
Ali-Ali O	P		1976 - 77
Aliante	P	16'	1978 -
Alibi III	P		1966 - 72
Alibi Wahoo	P		1973 - 78
Alimak	P	30' Bayliner	1984 -
Alimak	S	Cat 27	1980 - 81. 83 -
Ali Nui	S	22'	1970 - 72
Aliwan	P	41' Canoe Cove	1982 -
Alkaid	S	37' Cooper Seabird	1982 -
All Sun	S	Crown 34	1983 - 84
All West	P	25'	1980 -
All's Fair	P		1979 - 80
Allegro	S	23'	1973 -75
Allison M.	P	42' Grand Banks	1974 -
Allure	S	Ketch 54	1975 - 77
Alpha Wave	S	33' Yamaha	1985 -
Alphie	S	Swifts 24	1974 - 75
Alpine Mist	S	T-Bird	1981-
Alter Ego II	P		1977 - 78
Alter Ego III	P	45'	1979 -
Amara	S	Ketch 35	1973 - 75
Amatuana	S		1981 -
Ambiance	S	Hunter 31	1985 -



Yacht Name	Power Sail	Description	Year Book(s) Listing
Ameekiah	S	End 35	1979 -
Amphitrite	S		1967 - 71
Amphitrite II	S	Sloop 27	1972 - 75
Amphitrite III	S	Cal 2-34	1976 - 80
Amplidyne	S	T-Bird	1982 -
Anaham	S	Fly Jr.	1970 - 73
Anchorite	P		1971 - 72, 1974 - 82
Andante	S	51'	1970 - 72
Andante II	S	51 Spencer	1973 - 77
Andiamo	S	Soling	1970 - 82
Andorra LaVella	S		1977.
Andron	S	Toronado 20	1983 -
Angelglow	S	40'	1977 - 82
Angelsea	S	Ont. 28	1980 -
Anjoline	P		1985 -
Annabelle	P	Martin 32	1983.
Annie P	S	Martin 242	
Anon	S	Ericson 35	1981 -
Antidote	S	26'	1973.
Antigone	S	Dragon	1969 - 71
Antipolis	P	21' Reinell	1981 -
Anywhere	S	Force 5	1978 - 80
Aphrodite	S	Vik 33	1976 -
Apollo	P	21'	1983.
Applause	P		1975 - 81
Apple-Cheeks	S	31' Sloop	1971 - 80
Apple-Cheeks	S	Sceptre 36	1981 -
Appleseeds	S	C&C 35	1984 -
April	S	Star	1970 - 77
Aquarius	S	Sloop	1971.
Aquativity	P		1975 - 76
Aquavit	S	S.J. 24	1980 - 81
Aquestaer	S	ML 48	1976 -
Aquillon	P		1961 - 75
Aquillus	S	22'	1973 - 75
Aquilo	S	22 Col.	1976 -
Ardea	S	42' M.L.	1980 -
Arete	S	Sceptre 36	1982 - 83
Arfrene	P		1971 - 72
Argyle	S	41' Ericson	1978., 82 -
Ariel	S	29' Sloop	1959 -
Ariel V.	S	39' Sloop	1966 -
Aries	S	41'	1978
Arluk II	S	Peterson 35	1983 -
Armchair	S	S.J. 24	1978.
Arrow II	P		1951 - 71
Artemis	S	Cat 27	1977 - 78
Artemis II	S	Carter 33	1979 -

Yacht Name	Power Sail	Description	Year Book(s) Listing
Articus	P		1974.
Artu	S	Rawson 26	1970 - 77
Arundel	S	Dragon	1975 - 78
Arviragus	S	Dragon	1981 -
Asgard	S	Bayfield 35	1978.
Ashanti	S	Haida 25	1971 - 75
Assagai	S	Hotfoot 31'	
Astarte	S	Cat 27	1976., 1978 - 80
Asti	P	26' Lynnwood	1984 -
Astraea	S		1981 - 84
Astrolita	S	30'	1972.
Ataboy	P	25' M.V.	1982 -
Atari	S	Spencer 35'	
Atelier	S	Niagara 35	1979 -
Athansor	S	C & C 30'	
Atrain	S	Lightning	1963 - 73
Autumn Girl	S	Ont 32	1979 - 80
Avalon	S	Sloop 30	1971 - 75
Avanti 3	S	C&C 42' sloop	1981 -
Avenir	S	28' Bristol Channel	1980., 1983 -
Aviva	P	40' Cruiser	1973 -
Aweigh II	P		1976 - 77
Aweigh IV	P	42' Cruiser	1978 -
Baaz	S	Dragon	1969 - 72
Babe II	P		1985 -
Bacarra	S	34' Sloop	1972.
Bacchanal	P	28' North Wind	1984 -
Bacchus	P		1972 - 78
Bagheera	S	San Juan 24	1976 - 77
Bagheera	S	Yamaha 33	1979 - 80
Bagheera	S	Sceptre 36	1981 - 82
Bagheera	S	Alberg 37	1983.
Bagheera	S	Beneteau F38	1984 -
Bagheera II	S	Sun 27	1978 •
Bahadur	P	18' power	1982. 84 -
Baiune	P		1972 - 73
Balaena	P		1975 - 78
Bald Pate Too	S	37' Ketch	1979 - 80
Balderdash	S	22' Cuddy Cabin	1981 - 83
Balderdash	S		
Balimine	P	67' M.V.	1974 - 82
Ballygally	P		1964 - 72
Ballygally III	P		1973 - 74
Bally Gally IV	P	70' T.S.D.Y.	1975 -
Balthazar	P		1974 - 80
Bandit	P		1976 - 83
Banjo	S	33' Cal	1973 -
Banook	P	43' Monk/McQueen	1967 -

Yacht Name	Power Sail	Description	Year Book(s) Listing
Banter	S	29' Sloop	1965 - 81
Barbee II	P		
Barbet	P		1967 - 71
Bardick	P	68 Cruiser	1980 -
Bardonilla	P		1961 - 72
Barefoot Contessa	S	Contessa 26	1976 - 77
Barfleur	P		1977 - 79
Barfleur	P	30' Farrell	1981 -
Baron Rouge	S	Alberg 37	1969 - 75
Barrueco	S	Cheoy Lee Offshore 31	1981 - 83
Bartoni	P	41' Uniflite	1982 -
Beach Gold	P	21' Champion	1983 - 84
Beagle II	S	30'	1972 - 74, 76.
Beagle III	S	Alberg 30	1975.
Beaumaris	S	Niagara 35	1980 - 84
Beausoleil	P	32' Grenfell	1968 -
Bedlam II	S		1974 - 81
Beefeater	P	58' Chris Craft	1981 -
Bella Mia	P	40'	1981.
Belle III	S	M.L. 42	1980 -
Belly Dancer	S	Martin 24	1979 - 82
Beluga	S	25' Sloop	1970 - 72
Beluga	P		1978 - 80
Beluga	P	28' Uniflite	1982 -
Beluga II	P	36' Uniflite	1983 -
Bemuse	S	Niagara 35	1983 -
Benora II	S	36'	1962 - 74
Benora III	S	L 36	1975 - 78
Benora III	S	44.6' Sloop	1981 -
Bernard II	S	20'	1973 - 74
Bes	S	19' Whitehall	1983 -
Beta	S	Flying Dutchman	1966 - 74
Betelguese	S	Ganbare 35	1975 - 83
Betelguese	S	Peterson 35	1984 -
Betsy Karen	P		1969 - 71
Between the Sheets	S		1979 - 82
Betwix	S	30'	1977 - 78
B-Haven	S	26' Hourston	1980.
Big Bird	S	Disc. 42	1974 -
Billabong	P		1974, 1976 - 77
Billabong	P	46' Gulf Commander	1980 - 81
Billabong	S	Western 42' Ketch	1975, 1978 - 80
Billabong	P	42' Grand Banks	1985 -
Birgit	S		1982 -
Birkenhead	P		1976 - 77
B.J.	S	San Juan 24	1974 - 79
Black Chanter	S	36' Ketch	1975 - 81
Black Dolphin	P		1967 - 72

Yacht Name	Power Sail	Description	Year Book(s) Listing
Black Magic	S	Dragon	1984 -
Black Rain	S	Soling	1973 - 76
Black Raven II	P		1983.
Blackfish II	P	48' F.G. cruiser	1976 - 84
Blew	S	Misc. 505	1979 - 80
Blink Bonnie	P		1969 - 71
Blithe Spirit	P	50' Monk	1974 - 80., 83 -
Blue Belle	P		1972 - 74, 1976 - 79
Blue Bomber	S		1979 - 81
Blue Boy	S	Snipe	1962 - 69, 73
			1975 - 78
Blue Chip	S		1974 - 76
Blue Dolphin	P		1977 - 82
Blue Gallilee	P		1974.
Blue Heron	S	47' Sloop Martin 242	1954 - 72, 1974 -
Blue J	S	Lightning	1969 - 72
Blue Jay III	P		1975.
Blue Jay IV	P		1976 - 78
Blue Jeans	S		
Blue Macs.	P	24'	1978 - 84
Blue Magic	S	Cal 25	1978 - 80
Blue Max.	P	14'	1981 -
Blue Mist	S		1938 - 40, 1946 - 71
Blue Mist.	S	28' Windward	1983 -
Blue Spirit	P	33' Chris sedan cruiser	1980 - 84
Blue Spirit	P	40' Sport Fish	1985 -
Blue Wings	S	Geary	1938, 1958 - 63, 72 - 73
Bluebird	P		1979 -
Bluenose	P		1972.
Bluey	S	35' Sloop	1971 - 73
Bluey II	S	C&C 35	1975.
Bluey II	S	Spencer 1330	1977 -
Boadicea	S	C&C 36	1980 -
Boban	P	35' Sport Fish	1975 -
Bob-Kat	P	32' Trojan	1980 - 84
Bob-Kat	P	42' Uniflite	1985 -
Bob-O-Link	S		1970 - 71
Bogle	S	Trav. 32	1975 - 81
Bokia	S	Catalina 27	1980 - 82
Bonanza	P	24' Day cruiser	1962 - 73, 1975 - 83
Bondo Bandit	S	Star	1980.
Bonne Sante	S	C&C 30	1975.
Bonne Sante	P		1976 - 77
Booder Girl	P	36' Chris Craft Tri-cabin	1981 -
Born Free	P		1974.
Boru	S	Crn 34	1976 -
Boru II	S		1984.



Yacht Name	Power Sail	Description	Year Book(s) Listing
Bottoms Up	S	Force 5	1978 -
Bouja Baby	S	Thunderbird	1976 -77
Bounty	S	SJ 21	1976 -
Brachiation	S	24' Martin	1978 - 81., 85 -
Brandy	P		1975 - 80
Brandy Blazer	P		1974 - 75
Branta II	P	45' Monk/McQueen	1985 -
Breakaway	P		1972 - 73
Breakaway	P	34'	1983 -
Breezer	P		1972 -
Breezin	S	Star	1978 - 80
Breezin	S		1985 -
Breezin Thru	P		1940, 1961, 1974
Breezin Too	P		1975 - 78
Brenda	P		1967 - 72
Brenda-Mac	P		1978.
Brenhines IV	P		1969 - 74
Brigand II	P		1975 - 83
Bristol Fashion	S	Cal 28	1976 -
Bristol Rover	S	40'	1981.
Bristol Rover	P	45'	1981 - 82
Broker's Gal	P		1979 - 82
Bronco	S	Martin 32	1981 - 84
Brown Parrot	P	16'	1977 -
Bryal	P		
Brynne	S	Grampian 28	1981 -
Bucephalus	S	San Juan 24	1981 -
Bucky Lugger	S	Hda 26	1976 - 77
Bufflehead II	S	Crown 28	1974 - 78
Bulolo	P		1974 - 75
Bumble	S	Martin 242	1982 -
Burgundy	P	16' Severn	1982.
Buttercup	P		1974 - 79
Buzios	P	37' Alcan	1985 -
Byberlee	P	37'	1978 -
Bye Bye Blues	S	Mirage 26	1979 -
Caberne	S	23'	1972.
Cadenza	P		1971 - 75
Caia	S		1967 - 71
Caissa	S	GI 29'	1972 - 80
Caissa II	S	Cooper 353	1981 -
Calabash	S	Red 30' Sloop	1970 - 71, 73 - 80
Calabash	S	Redwing 30	1982 -
Calculation	S	Star	1979.
Calico Jack	S	25' Sail	1980.
Calico Jack	S	U.S. 25	1982 -
Callaloo	S	32' Centurion	1973 -
Calliope	S	C&C 40	1981 -

Yacht Name	Power Sail	Description	Year Book(s) Listing
Callisto	S	37' Irwin	1977 -
Cal-Tiki	S	20' Sloop	1963 - 67, 69 - 72
Cam	S	Dragon	1980 - 81., 83 -
Camaja	S	Sceptre 36	1983 - 84
Camaline	P		1977 -78
Camaraderie	P	36' Uniflite	1983 -
Camas	S	27' Sloop	1982.
Cambria	S	Custom 30	1949, 1951 - 71 1977 - 79
Camelot	P	40' Supercraft	1979 -
Caminate	P		1971 - 78
Campana	P		1957 - 72
Canadian Fifer	S	M.S. ketch 33'	1971 - 72. 1974 -
Canina	P	37' Gulf Star	1978 -
Cantamar II	S	Martin 29	1974 - 78
Canyon Runner	P	26'	1981 - 82
Canyon Runner	P		1984 -
Cape Beale	P	61' Converted Fish Packer	1982 -
Cape d'Or	P		1968 - 74
Capesterre	P	60' Monk/McQueen	1970 -
Capri	S		1977 - 78
Caprice	P		1938, 40, 51, 1952 - 61, 1979
Capricho	S	C & C 35'	
Capstan Kid	P	34'	1983 -
Caralyn	P		
Caramia	P		1966 -82
Caramia	S	Maple Leaf 42	1983 -
Cardinal	S	C&C 35	1976 -
Carefree	P	60'	1969 -
Caribbean	P		1970 - 71
Caribbee	P		1972., 75 - 76
Caribbee	P	36' Canoe Cove Diesel	1982 -
Caribbee II	P	34' Trawler	1980.
Cari-Lo	P	38' Trawler	1976 -
Carita	P	31' Uniflite	1980.
Carmonelto	P		1973 - 78
Caroline	S	41'	1972 - 73
Caroma	P		1960 - 71
Carousel	P		1976.
Carousel III	P		1977 - 82
Carpe Diem	S	San Juan 24	1976.
Carpe Diem	P	35' Chris Craft	1971 -
Carrera	S	Catalina 27	1976 -80
Carrera II	S	35 C&C Mark II	1981 - 83
Carrera II	S	C&C 30	1984 -
Carronade	S	Tartan 41	1982 -
Casablanca	P	41' Canoe Cove	1972 -

Yacht Name	Power Sail	Description	Year Book(s) Listing
Casa Mar	P		1971.
Cascade	S	S.J. 7.7	1980 -84
Casey Too	S	Flying Junior	1971.
Castaway	P		1978 - 79
Castaway	P		1984 -1985
Catalina	S		1976.
Catamaran	S	Windsurfer	1982.
Catchup	S	Geary	1967 - 71
Cathay	S	42' Ketch	1975 - 76, 1980 - 82
Cato	S	26' Cat Boat	1982 -
Cato	S	26' Nonsuch	
Cat's Paw	S	Ont. 32	1980 -
Ca-Va	S	6 metre	1953 - 63 1967 -
Cavalaire	P		1964 - 81
Cavalier	S	30' Sloop	1957 - 72, 1975.
Caviar	S	Soling	1977 -
Cayenne	S	Cal 25	1974 - 76
Caylee	P	27' Sea Ray	1981 -
Cayuse	S	PY 26	1975 - 78
Cazador	P		1971 - 76
C-Chan	P		1981 - 82
Cee Aer	P	65'	1970 - 77, 1980 - 81
Celerite	S	Hotfoot 27	1983 -
Celeste	S	55' Sloop	1971.
Centaur	S	26' Sloop	1971 - 73
Cephei	S	Star	1971.
Cephei II	S	Cal 22	1972 - 75
Cerce	S		1970 - 71
Ceres	S		1969 - 71
Cha Cha III	P		1968 - 72
Chaika	S	45' Sloop	1973 - 80
Challenge	S	Star	1983 -
Championship	P	26' Cruiser	1982 - 83
Championship	P	32' Grand Banks	1984.
Chance	S	Soling	1970 - 71, 1974.
Chantecleer	P	50' Monk	1981 - 82
Chantecleer	P	36' Grand Mariner	1983 -
Charlie	S	Ericson 35	1972 - 77
Charmer	P		1972 - 73, 1975 - 79
Charmer	P	55' Grenfell	1982 -
Chasseur	P	25' Bertram	1985 -
Checkmate II	S	Crown 28	1975 - 77
Checkmate II	S	Crown 28	1980 -
Chee Chako	S	Catalina 27	1974 - 77
Cheng Ho	S	Contessa 33	1976.
Chequers	P	40' Richardson	1982 -
Cherokee Miss	P	41' Trawler	1979 -
Cher Sea	S	26' Sloop	1980 - 81

Yacht Name	Power Sail	Description	Year Book(s) Listing
Cherian III	S	C&C 30	1974 - 77
Chica	S	38' Yawl	1975.
Chicanery	S	Soling	1970 - 78
Chicanery	S	Soling	1983 -
Chicgalia	S	Crown 23	1981 -
Chico Viento	S	32' Sloop	1969 - 74
Chilkat	P	Coaster 23	1985 -
Chilon	P		1978.
Chimera	S	Cal 30	1974 -
Chimo	S	35' Sloop	1974 - 75
Chimo II	S	C&C 27	1974 - 75
Chimo II	S	36'	1977 - 83
Chimo II	S		
Chimo III	S	C&C 27'	1972 - 73
Chimo IV	S		1974.
Chimo V	S	C&C 35	1975.
Chimo V	S	C&C 35	1980 -
Chinook	S	30'	1972 - 74
Chip	S	O.K. Dinghy	1964 - 71
Chiquita	S	Martin 29	1974, 1976 - 78
Chirma	S	Catalina 27	1980.
Choco	P	25' Custom	1977 -
Choco Mica	P	36' Trawler	1980.
Choco Pop	P		1981.
Choiseul	S	Swan 38'	1979 -
Choqua	P		1976 -80
Chrisaula	P	50'	1973 - 84
Christabel	P	70' Monk/McQueen	1974 -
Christerli	P		1976 -80
Christina	S	36' Sceptre	1981 - 83
Chunky Too	P		1971.
Cimerron	P		1984 -
Cinnamon	S	Star	1978., 80 -
Cirrus	S	34' Ketch	1961 - 77
Cirrus	P		1977 - 78
Cirrus	S	C&C 25	1984 -
Citation	S	Peterson 44	1981 -
Clahani IV	P		1974.
Claire d'Lune	S	45'	1970 - 73
Clair d'Lune	S	36'	1976, 82.
Clair Norm	S	25' Riviera	1972 - 77
Clockwork Rocketship	S	Mull ¾ Ton	1978, 80, 1982.
Cloud I	S	24'	1972.
Cloud I	P		1973 -74
Cloud Nine	S	C&C 27	1981 -
Cloudrace	S	35' Ericson	1968 - 80
Cloudrace	S	35' Peterson	1983 -
Clyde	P		1976.



Yacht Name	Power Sail	Description	Year Book(s) Listing
Coelacanth Sea Dreamer	S	San Juan 24	1976 - 77
Cognac	S	25' Cal	1973 - 74
Coho	S	51' Sloop	1967 - 73
Coho	S	Spencer 54	1975 - 76
Coho	S	Spencer 34 3/4 Ton	1980 -
Coho II	S	Spencer 44	1977 - 78
Coleship	P		1975 - 77
Comedy	S	Chan 32	1976.
Coming Attraction	S	Star	1981.
Compadre	P	25'	
Compadre	P	30' Tollycraft	1982 -
Compass Point	P	37' Sportfish	1983 -
Complicity	S	24' sail	1983 -
Compt-Yare	P		1979 - 80
Comrade Cherry Loinfruit of Yaunt	S	Soling	1975, 1977 - 79
Comtessa	S		1957 - 71
Con Brio	S	Cor 34	1975 - 78, 1980.
Con Dios	P		1968 - 72
Contagious	S	C&C 30	1980 -82
Cool Change	S	Irwin 28	1981 -
Copacetic	P	36' Sedan	1979 -
Copepod	S		1963 - 71
Coprinus	S	CT 41	1976., 78 -
Coracle	S	20'	1972 - 73
Coral Seas	P		1971 - 73
Coranto	S	Coron, 27	1972 - 78
Corrie-D	P	20' Cruiser	1980 -
Corsair I	P	36' Cruiser	1938 - 40, 1946 -
Corubi Cruiser	S	C&C 36	1982 -
Coryels	P		1947 - 74
Cossack	S	Islander 36	1982 -
Countess II	P		1975.
Countess III	S	Nwpt 41	1976 - 83
Countess III	S	C&C 40	1984 -
Court of Appeal	S	36' Ketch	1972 - 77
Cove Lady	P		1972 - 75, 1978.
Cove Lady	P	53' Canoe Cove	1980 -
Cove Quest	P	41' Canoe Cove tri-cabin	1980 -
Cove Spirit	P	41' Canoe Cove	1978 - 82
Cover Girl	P		1947, 1962 - 73
Cox'n	P		1970 - 76
Coxs'n I	P	25' Cruiser	1979 -
Coya	P		1963 - 74
Crackerjack	S	Crown 34	1980 -
Cresset	S	40' Cutter	1938 - 40, 1946 - 80
Critical Path	S	T-Bird	1985 -
Crusader	S	51' Sloop	1967, - 72

Yacht Name	Power Sail	Description	Year Book(s) Listing
Crystal C.	P		1969 - 79
Cuckoo's Nest	S	53' Sloop	1981 -
Cul-De-Sac	P		1971 - 74
Curare	S	36' Boman	1981 -
Curious	S	C&C 27	1983 -
Curlew	S	Ericson 29	1976 - 78
Custard Pie	S	San Juan 24	1974 - 75
Custard Pie II	S	San Juan 30	1976 - 78
Daffy-Down-Dilly	P		1972.
Dalarna	P		1965 - 75
Dalkeith Doll	P		1969 - 75
Dalliance	P		1985 -
Dalu	S	29' Sail	1985 -
Dandelion	S		1982 - 84
Danish Maid	S	37' Ketch	1972, 1975 - 77. 79 - 81
Danish Pastry	S	C&C 35	1976 - 83
Danish Pastry	S	C&C 40	1984 -
Daphnia	P		1971.
Darben	S	25'	1973.
Dark Star	S	26' L 16	1979.
Dartel	P	34 Sedan	1974 -
Daru	S	San Juan 28	1982 -
Darvista	P	37' Uniflite	1981 -
Dawn Star	S	42' Motor Sailor	1971 - 72, 1976.
Dawn Star	S	Spencer 42	1978 - 81
Dawn Treader V	S	Niagara 35	1983 -
De Nada	P		1976.
Deacon Samuel	S	39' Fast Passage	1981 -
DeAnza III	P		1959 - 72
DeAnza III	P	65 M.Y.	1982 -
Deb	S	Dragon	1979 - 81
Deborah Ann	S	42' Ketch	1978 - 79
Dee Ann	P		1974.
Defiant One	P	60'	1982 -
Deirdre II	P		1951 - 56, 1958 - 72, 1974 - 82
Deja-Vu	P	26' Express Cruiser	1981 - 83
Delft	S	20'	1972 - 73
Deliverance	S		1985 -
Delta Lady	S	L 19	1978 - 80
Demian	S		1977 - 79
Deora	P	49' M/McQueen	1984 -
Deseree	S	30'	1978 - 80
Diablo	S	Laser	1980 - 81
Diane	P		1977.
Dingo	P	36' Trojan	1980 - 83
Dingo	P	45' Sport Fisher	1984 -
Diomedea	S	36' Sloop	1970 - 79

Yacht Name	Power Sail	Description	Year Book(s) Listing
Diomedia	S	Lapworth 36	1981 -
Dione	P	72' Monk/McQueen	1975 -
Directed Energy	S	30' Irwin Custom ½ Ton	1985 -
Discovery	S	48'	1977 - 80
Dispute	S	Spencer	1976 - 83
Dispute	S	San Juan 24	1984 -
Diver	P	34' Tollycraft	1981 - 82.
Diver	P	34' Sedan	1984 -
Dixie	P		1975 - 82
Django	P	25' Albin	1978 -
Doca	P	36' Grand Mariner Trawler	1982 -
Dolphin Gal	P		1970 - 73
Domani	S	C&C 30	1979 -
Don't	P	21' Olympic	1974 -
Donzi	P		1968 - 71
Donzi	P	17' Donzi	1985 -
Dorado	P		1968 - 75
Dorado	P	50' Cruiser	1981 -
Doran II	S	37'	1969 - 71
Dorlen	P		1961 - 71, 1973 - 74.
Double Entry	S	C&C 33	1976 - 78
Dove	S		1982 -
Doxy	S	Spidsgatte 26	1982 -
Dragon of Cherwell	S	Rasmus 35	1977 -
Dream Along	P		1971.
Dream Machine	S	Jones 44. 2 Ton	1980 -
Dream Weaver	S		1977 -81
Dreamer	P		1972 - 74
Driftwinds	S	38' Sloop	1970 - 72
Driver	S	62' Sloop	1968 - 77
Druid	S		1982.
Drums and Wires	S	Martin 242	
Duet	S	Hughes 30	
Dulcinea II	P	53'	1974 -
Dumptruck	S	Martin 24	1983 -
Dynasty	P	36' Grand Mariner	1982 - 83
Dyn-Ornite-Too	P		1977.
Eagle	S	Dragon	1983 -
Eagle II	P		1976 - 78
Ealasaid	S	32' Sloop	1946 - 75
Early Bird	S	27' Sunbridge	1982 - 84
Earth-Curve	S	26' Cal	1973 - 79
Eclipse	S	Dragon	1980 - 81
Ecliptic	S	Enterprise 13' Dinghy	1969 - 80
Ecliptic	S		1982 -
Edelweiss	S	Spencer 42	1975 - 77
Edelweiss I	S		1974.
Edelweiss II	S	48' M.L.	1978 -

Yacht Name	Power Sail	Description	Year Book(s) Listing
Edge	S	Laser	1977., 1979 - 81., 83 -
Edna	S	27' Catlina	
Egress	S	28'	1978.
Egress	S	Westward 42	1983 - 84
Egress II	S	Disc 42	1985 -
Eiliah Mor	S	24' Sloop	1971 - 72
Elakha	S	44' Spencer 1330	1977 -
Elan	S	Catalina 27	1983.
Elanat	P		1958 - 74
Eldorado II	P		1966 - 78
Eleanor	P	28'	1979 -
Electra	S	Ericson 32	1981 -
Elena "D"	P	36' Uniflight	1981 - 84
Ellesmere Park	P	47'	1974 - 84
Elle Va	S	Soling	1972 - 74
Elsinore	S	30' Hunter	1969 -
Elskede	S	C&C 27	1975 - 77
Elusive	S	34' Sloop	1971 - 74
Elysian	S	C&C 36 Sloop	1981 -
Elysium	S	24' Buccaneer Sloop	1975 - 78., 80 -
Emma	S	Spencer 42	1981., 83 - 84
Empress	S	33' Yamaha	1983 -
Enchanted Owl	S	Martin 242	1985 -
Enchantress	S	29' Sloop	1972 - 76
Endeavour	S	Roberts 40	1980 -
Endless Summer	S	Maple Leaf 48	1970 - 81
Endless Summer	S	12 Metre	1983 -
Endless Winter	S	9' Cat.	1972.
Energizer	S	Sceptre 36	1982 -
Enetai	S	Alajuela 38	1980., 82 -
Enshallah	S	San Juan 24	1976 - 77
Enshallah II	S	SJ 30	1978 -
Epicure	S	36' CS	1981 -
Equinox	P		
Eressea	S	Ontario 32	1977 - 80
Errant	P		1961 - 72
Errant	S	28' WWD 850	1981 -
Escalante	P	48' Monk	1972 -
Escapada	P		1970 - 72
Escape	S	30'	1972 - 74
Euphoria	S	Hullmaster 27	1980 - 84
Evergreen	S	30' Ketch	1980.
Evita	P	Zeta 24'	1980 - 81
Evohn	P		1967 - 71
Ewyn-Y-Mor	S	Alberg 30	1979 - 80
Ewyn-Y-Mor II	S	Meteor M-8	1981.
Excalibur	S	Ericson 32	1979 - 81
Excalibur II	S	Cooper 416	1982 -



Yacht Name	Power Sail	Description	Year Book(s) Listing
Expectations	S	Cal 28'	
Expediter	P	29' Bayliner	1978 -
Faem	S	36' Sloop	1962 - 80
Faem	S	C&C 35 MKI	1982 -
Fairtide	P		1972 - 76
Fairwinds	S	38'	1972.
Family Affair	P		1985 -
Fancy	S	Soling	1975 - 78
Fancy	S	Star	1979 - 83
Fandango	S	Sun 838	1984 -
Fantasie II	S	34' Sloop	1957 - 73
Fantastic	P	28'	1980.
Fantasy's Child	S	28' Bristol	1979 - 83
Far Far Away	P		1974.
Farlee	P	33' Chriscraft	
Fast Track	S	35' Sloop	1983 -
Fastnet	S	Form 31	1975 - 78
Fastnet	P		1979.
Fastnet	S	31' Sloop	1980 -
Faszination	S	Flying Dutchman	1971 - 73
Fat Cat	S	Catalina 27	1976 - 81
Fat Sam	P		1975, 1977 - 78
Fejan	S	S35	1976 - 80
Feliz	P	62'	1980 - 82
Fenix	S	Fenix 28 Sloop	1985 -
Festival	S	Sceptre 36	1982 - 84
Fifer	P		1975 - 80
Final Stage	S	Laser	1978 - 81
Finale	S	Westward 42	1976 - 82
Fines' Kind	S	28' 7" sloop	1980 -
Finisterre	S	Niagara 35	1980 - 83
Finnesterre	S	Alberg 30	1972 - 77
Fire Dragon	S	Catalina 27	1982 -
Fire Truck	S	Martin 24	1981 -
Firewind	P		1976 - 77., 79 - 80
First Edition	S	28' WWD 850	1979 -
First Edition	P	47'	
First Luff	S	San Juan 23	1983 -
Fisherman	P	52'	1980 - 82
Fixer	P	28.6 Sportsfisherman	1981 -
Flame	S	48' Sloop	1970 - 73
Flashpoint	S	Hotfoot 27'	1984 -
Flat Trade	S	Laser	1983 -
Flattery	S	Peterson 2 Ton	1983 -
Fleet Fairy	S	33'	1953 - 71
Fleetwing	S	23' Pac.	1973 - 76
Fleetwood	P		1967 - 72
Flew	S	Martin 29	1977 - 80

Yacht Name	Power Sail	Description	Year Book(s) Listing
Flight	P		1960 - 72, 1974.
Flobabe	P	28'	1984.
Flower Maiden Heaven	S	San Juan 21	1976.
Flying Camel	S	27' O'Day	1983 -
Flying Lady	P	41' Tollycraft Tri-cabin	1981 -
Flying Spray II	P		1964 - 80
Flying Walrus	S	26'	1952 - 55, 1957 - 71
Foil	P		1973.
Folly	P		1973 - 80
Folly	S	42' Ketch	1980 - 82
Foo	S	Catalina 27	1974 - 76
Foo Too	S	Soling	1973 - 76
Force X	S	24'	1977 - 78
Force X	S	Laser	1982.
Foreign Exchange	P	38' Uniflite	1983 -
Fortuna	P		1979.
Four Bells	P	52' Monk/McQueen	1971 -
Four Seasons	P		1958 - 72
Foxy Lady	P		1978 - 80
Fraces "E"	P	36' Grand Banks	1985 -
Framac	P		1952 - 74, 1975., 1978
Frantic	S	Crown 28	1975 - 78
Fran-T-Sea	P	35'	1978 -
Frecal	S	Columbia 26	1974 - 77
Fred Again	S	¼ Ton 26 Kirby	1976 -
Fred II	S	26' Sloop	1975.
Free Enterprise	P		1967 - 72
Free Spirit	P		1973 - 76
Free Style II	P	41' Canoe Cove	1985 -
Free Trade	P	Uniflite	1983 -
Freya	S	36'	1972 - 80
Friendship	P		1966, 1969 - 74
Fubbs	S	Star	1985 -
Fulmar	S	8 Metre	1955 - 74 1976 - 80
Furiant	S	40' Yawl	1966 - 80
Fusilier	P	48' Cabin Cruiser	1938, 40, 49 - 72., 74 -
Fu II	S	Soling	1977 - 80
Gabrielle II	S	48' Sloop	1972 - 75
Gabrielle III	S	53' Sloop	1968 -
Gabrielle III	P		1974.
Gaelic Mist	S	Ericson 35	1981 -
Galatea III	P		1974 - 81
Galatea IV	S	47' Sloop	1975 - 79
Galavant	P	30' Trojan	1974 -
Galliarde	S	24' San Juan	1985 -
Galway	P		1973., 1975 - 80

Yacht Name	Power Sail	Description	Year Book(s) Listing
Gardina	P	55' Motor Yacht	1980.
Garza Blanca	P		1976 - 79
Gaviota	P	48'	1979, 1981 - 84
Gay 90's	P		1976.
Gazelle II	S	29' Cal.	1972 - 73.
Geisha Girl	S	Yamaha 30	1982.
Gemini	P		1982.
Gemini	P	22'	1985 -
Gemini	S	C&C 35 MK II	1982 -
Gemini	S	41' Morgan	1984 -
Generatin	S	C.S. 36	1981 -
Genesis	P	42' Trawler	1985 -
Genever	S	35' Sloop	1972 - 75
Genevieve	S		1977 - 78
Geodesy	P	50'	1979 -
Geojulis	S	41' Whitby	1985 -
George Kitamike	S	Seaborn 38	1963 - 75
Georgia Girl	P		1975 - 77
Georgie Belle	P	22'	1977 -
Get Serious	S	Fireball	1977 - 80
Gibson Gal	P	51'	1966 - 73
Gibson Gal	P	53'	1974 - 80
Gibson Gal	P	75' Monk/McQueen	1981 -
Gidget	S	Finn	1982.
Gigolette	S	IS 36	1976 - 82
Gil Eannes	S	25'	1972.
Gillcrest	P		1964 - 79
Gillian	S	C&C 27	1973 - 78
Gini II	S	Seafair 32	1963 - 75
Gjoa	S	Ca. 25	1974 - 81
Gladson II	P		1963 - 79., 81 -
Glass Slipper	S	32' Disc.	1973 -
Gloaming	S	M/S	1975 - 76
Gloaming	S	Maple Leaf 42	1977 - 79
Glomerulus	S	Disc. 32	1971 -
Gnome	S	Star	1982 -
Gogama	S		1975 -
Gogama	S	Dragon	1982 -
Gogama	P		1971 - 74
Gogama	P		
Godenwind	S	Douglas 32	1976 - 78, 1981 - 83
Go Go Girl	P		1971 - 73
Golden Eagle	P	48'	1979 -
Golden Hind II	P	34' Cabin Cruiser	1957 -
Gometra	S	43' Sloop	1946 - 75
Gone Bananas	S	32'	1982 - 84
Gooder	P	28' Fiberform	1983 -
Goodship	P	45' Grenfell	1974 -

Yacht Name	Power Sail	Description	Year Book(s) Listing
Gossip	P	48' Canoe Cove	1972 -
Goudies	S	Laser	1977.
Gracious	S	Ontario 32	1982 - 84
Grandes Esperanzas	S	Martin 242	1983 -
Granny	S	Rge. 28	1978 - 81
Gray Dawn	P		1979 - 80
Gray Dawn II	P	45' Grenfell	1981 -
Gray Lady	S	Fireball	1982.
Graybeard	S	73' Ketch	1970 - 80., 82 -
Graywing	P		1971 - 81
Great Granny	S	C&C 36'	1982 -
Grebe	S	Crown 28	1974 - 75
Greenling	S	Spencer 31	1974 - 77. 1979 -
Green Parrot	P		1967 - 72, 1975 - 76
Grenadier	S	28'	1972.
Grenadier	S	Cooper 41.6.	1981 -
Gretel	S	Cal 25	1973.
Grew	P		1976 - 82
Grey Owl	S	C&C 30	1981 - 82
Grey Owl II	S	C&C 30	1983 - 84
Grey Owl	S		
Griffin	S	Grampian 28	1977 -
Griffin III	P		1967 - 72., 75 - 79
Groovy III	P	28'	1978 -
Guava	S	Rawson 26	1975.
Gusto	S	Tasar	1980.
Gusto	S	San Juan 7.7.	1981 -
Gumper I.	P		1979 -
G-Whiz	S	C&C 25	1983 -
Gypsy	S	Star	1965 - 78
Haddington Island	P		1975 - 79
Haereticus	S	Custom 32	1983 -
Haggis	S	Grpn 26	1976 -
Haida	S	Fly Jr.	1970 - 71
Haida Princess	P		1982 -
Haida Raven	S		1969 - 71
Haida Raven	S	Spencer 31	1974 -
Halcyon	P		1971.
Halcyon II	S	35' Cutter	1972 - 81
Hale Makai II	P	42' Grand Banks	1985 -
Halia	S	47'	1972 - 74
Hannah III	S	Pace 32	1975.
Happy Hour	S	24' Mirage	1984 -
Happy 'Ours	P	32' Command Bridge	1979 - 80., 82 - 84
Happy Our's	P	36' Uniflite	1985 -
Harwar	S	J 36	1985 -
Hatteras	P		1971.
Havoc	S	Fly Jr.	1965, 1967 - 71



Yacht Name	Power Sail	Description	Year Book(s) Listing
Hawaiian Time	S	28'	1973.
Hawk	S	48' Bird	1946 - 72, 1974 1977 -
Hawk	S	Lightning	1970 - 71
Hawkline Monster	S	Laser	1978.
Haxan	S	29'	1973 - 74
Heatherbel	P	38' Tri Cabin	1967 - 81
Heatherbel	P	48' Canoe Cove	1982 -
Heathcliff	S	24'	1978 - 80
Hebron	S	Pearson 36	1984 -
Hegira II	P	50' Gulf Commander	1979 -
Heiress	P	36' Trawler	1979 -
Henry VIII	P		1971 - 81
Her Nibs	P		1961 - 75
Hernando High	P	20'	1981 -
Hermosillo	P		1951 - 57, 1963 - 78
Hilarity	S	Peterson 44	1980 -
Hilary Elaine	P	46' Grenfell	1971 -
Hinemoa	P	52' Monk/Thames	1972 -
Ho Hum	P		1969 -
Holoholo	P	36' Canoe Cove	1980 -
Honey Bear	P	38' Cruiser	1981 -
Honu II	P	40'	1982 - 84
Hood Point	P	32' Grand Banks	1981 -
Horizon V	P	72' Monk/McQueen	1977 -
Hortense	S	Chaser 29	1978 - 85
Hortense	S		
Hotei II	P	80' Monk/McQueen	1981 -
Hotspur	S	C&C 35	1976 -
Humber Arm	S	Niag, 26	1980 - 84
Humber Arm	P	30'	
Hunakai	P	36' Grand Banks	1978 -
Hussar	S	West 32	1974 -
Hyperion of Hamble	S	36' Halbergier Ketch	1973 -
Iambe	P	34'	1983 -
Icicle	S		1975.
Idle Hours	S	Cal 28	1975.
Idolours	P		1951 - 74
Idolours II	P		1969 - 72
If	P		1975 - 82
Ikaros	S	SJ 24	1977 -
Ilala	S	36'	1975 - 76
I'llaway II	P		1959 - 73, 1976 - 80
Ilsa	S	Fireball	1982 -
I'm Alone	S	Alberg 30	1975 -
Immigrant	P	36' Island Gypsy Trawler	1981 - 82
Imp	S	Dragon	
Impatience	S	Raw 26	1975 - 77

Yacht Name	Power Sail	Description	Year Book(s) Listing
Imperial	P	36' Uniflite	1980 - 82
Imperial	P	38' Uniflite	1983 -
Impulse	S	Peterson 35	1983., 85 -
Impulse	S	Peterson 30	1984.
Impunity	S	35'	1982 -
Impunity	S	Flying Junior	1965 - 71, 73, 78.
In Debt	P	30'	1984 -
In Flight	P	33' Bayliner	1981 -
Inalla	S	Islander 30	1979 - 80
Inalla	S	30' Newport	1983 -
Incantation	S	Santa Cruz 50	1982 -
Indomitable	S	S&S 47 Custom Sloop	1980 -82
Innovation	P	38'	1982.
Innovation	P	40'	1983 -
Insatiable	P	27' Chris Craft	1983 -
Insolvent	S	Laser	1983 -
Integrity	S	San Juan 24	1978.
Integrity	S	65'	1981 - 82
Interlude	S	37' O'Day	1981 -
Interlude	P	21'	1980.
Interlude	S	30' Catalina	1982 -
Intrigue	S	Dragon	1983 -
Inuit	P		1973 - 76
Ippocampos	P	34' Cruiser	1972 -
Invader	P		1938 - 41., 1946 - 71.
Invicta Duo	S	26'	1972 - 75
Ipo Kai	P		1974 - 76
I.R.A.	S	Flying Dutchman	1971.
Irish Coffee	S	J-24'	
Irish Cream	S	25' O'Day	1983 -
Irish Mist	S	Yamaha 30	1981 - 83
Irish Mist	S	CS 36	1984 -
Irish Spring	P	31' Uniflight	1975 - 80
Irish Spring	S	Maple Leaf 42	1981.
Iroquois II	P		1972 - 75
Isa Lei	P		1979 - 82
Isabella	S	Niagara 35	1979 -
Ishtar	S	Stoltz 25	1979 - 80
Isis	P	42' Grand Banks	1974 -
Island Drifter	S	Irwin 33	1976. 1979 -
Ivor Heath	S		1976.
Ivory Trader	P	28' Bertram	1980 -
Jade Stone	P		1976 - 80
Jade Winds	S	Maple Leaf 48	1974 - 78
Jadestone	S		1974 - 75
Jai Alai	S	J24	1982 - 83
Jamaica Chicken	S	Thunderbird	1977.
Jammin	S	505	1982.

Yacht Name	Power Sail	Description	Year Book(s) Listing
Janie	S	40' Sloop	1972.
Jasmine	P		1971 - 75
Jay Bird	S	32' Sloop	1979 - 84
Jay-Dee	S	Cor. 27	1972 - 75
Jay-Dee	S	Cal 29	1978 -
Jay-Dee II	S	Rbts. 32	1976.
Jayn K.	P	34' Sport Fish	1976 - 84
Jazzy	P	56.6 Trawler	1979 -
Jelly Beans	P	27'	1983 - 84
Jenetta	S	71' Ketch	1954 - 73
Jester	S	L36	1962 - 71, 1973 - 78
Jeleanne "M"	S	Sloop	1976 - 77
Jeunesse	S	35' Sloop	1965 - 73
Jeunesse II	S	Hughes 48 Yawl	1974 -
Jimray	P	51' Gulf Commander	1979 -
Jingo	S	J 24	1981 - 82
Jinx	S	Dragon	1982.
Jivaro	S		1970 - 72
Job	S	505	1979.
Joe Ceremony was very Short	S	Windsurfer	1981.
John Antle II	P		1968 - 78
John B.	S	Flying Junior	1971 - 73
John Poll Jones	P	41' Chris Craft	1977 - 84
Joint Venture	P	31'	1980.
Jo-Jo II	P		1985 -
Joker	S	Lightning	1970 - 71
Jolly Olly	S	28' Sloop	1957 - 73
Jolly Olly III			1974.
Jolly Olly IV	S	Ganbare 35	1975 -
Jolly-Dragon	S	31' Cheoy Lee	1973 - 75
Jo-Mar II	P	57' Christ Craft	1981 -
Jonathan Livingston Seagull	S	Dragon	1973.
Jonathan Livingston III	S	Dragon	1974.
Jordalleen	P		1979 - 80
Jordi-Gal	P		1973 - 74
Josamy	P	41' Canoe Cove	1979 -
Josephine IV	P	53'	1983 -
Joss	S	Thunderbird	1980 - 83
Juana	S	Dragon	1979 - 80
Juanita	S	San Juan 28	1981 -
Jucaro	P		1969 - 73
Jumala	S	Dragon	1983 -
Jumell	P	47' Chris Craft	1983 - 84
Junaca	S	Dufour 31'	
K & C	P		1976.
Kaa-Sum	S	Dragon	1976 - 77

Yacht Name	Power Sail	Description	Year Book(s) Listing
Kacheena	S	Spencer 1330	1980.
Kaien	S	C&C 30	1981 -
Kai Nui	S		1974 - 75
Kainui	S	25'	1961 - 71
Kaila	P		1979 - 80
Kalamalka	P		1970 - 72
Kalani	P		1976 - 78
Kalewa	S	Northward 29	1973 -
Kalitan	S	Discovery 32	1974 - 79
Kalliste	S	28'	1954 - 71
Kamare	S	26'	1972 - 75
Kamora	P	27' Cornet	1979 -
Kana-O	S	Haida 26	1970 - 81
Kandah	S		1970 - 71
Kanga	P		1971 - 75
Kantaki	S	32' Cutter	1964 - 72, 1974 - 75
Karalan Five	S	Cal 29	1981 -
Karen	P	37' Cruiser	1979 -
Karion	S	Col. 26	1978 - 80
Karma	S	41'	1972 - 75
Karma	S	Northwest 30	1978 -
Katsuro	S	C&C 27	1978 - 84
Kaupeepee	S	Rgr. 26	1975 - 76
Kavna	P		1979 - 80
Kaya II	P	66' LRC	1981 -
Kayaka	S	Windsurfer	1982.
Kay Dee II	P	Classic Yacht 36'	1980 -
Kayoko	S	37' Ketch	1978 - 80
Kayus II	P		1976 - 78
Keewaydin II	S	41' Sloop	1971 - 72
Keewaydin II	S	37' Alberg	1973 -
Kehloke	S	Martin 29	1977 - 78., 82 -
Keiki	S	Catalina 27	1984 -
Kelea	S	Spen. 34	1979 - 83
Kelea	S	Contessa 39	1984 -
Kelly	S	Geary	1967 - 73, 1975.
Ken-San	P	25'	1978 - 79., 1982 -
Keo Keo III	P		1976 - 82
Kermit	S	Lightning	1980.
Kermit	S		1982.
Kersco	P		1976 - 77
Keshena	P		1975.
Keshena III	P		1976 - 80
Kestrel	S	Alberg 30	1973 - 74, 1976 - 80
Kestrel II	S	Martin 29	1974 - 79
Kestrel II	P		1973 - 77
Kestrel III	S	Martin 32	1980 -
Kestrel III	P	34' CHB	1978 -



Yacht Name	Power Sail	Description	Year Book(s) Listing
Khaki Moon	P	41' President	1977 -
Khamsin	P		1977 - 78
Khamsin	P	26'	1982.
Kilipi	S	Seafair 32	1977 - 78
Kim	P		1970 - 74
Kimchow	S	40' Sloop	1971 - 83
Kimje	S	Spencer 1330	1966 -
Kimlis	P	45'	1983 - 84
Kin Jan	P	32' Island Gypsy	
King Neptune	P	45' Grenfell	1976 - 83
Kinjan	S	C&C 38	1984 -
Kini-Popo	S	21' Sloop	1983 -
Kinship	S	38' Brewer	1981 - 84
Kismet	S	Columbia 36	1977 - 83
Kittiwake	P		1967 - 74
Kiunga	S	26'	1972.
Kiunga II	S	31' Ketch	1972 - 73
Kiunga II	S	40' Ketch	1974 - 76
Kiwa	S	Thunderbird	1974 - 77
Klahanie IV	P	41' Tri Cabin	1974 -
Klee Wyck	P		1977 - 80
Knockout	S	30' Custom	1983 -
Kokanee II	P		1975 - 79
Kokopai	S	45' Ketch	1974 -
Kona Kai	P		1959 - 72
Kona Kai	P	25' Lyman	1974 -
Kon-Tiki-Too	P		1958 - 73
Koru	S	28' Sloop	1975 - 77
Koru	S	Crown 34	1978 - 80
Koru	S	Whitby 42	1981 -
Kotare	S	20' Sloop	1966 - 72
Kristamar	P		
K'Shain	P		1970 - 80
'Ksan	S	Disc 42	1977 -
Kulakula	S	C&C 27	1974 -
Kumulani	P		1972 - 74
Kwaie Tek	S	Spencer 51	1973 - 74
Kwaie'tek	S	Spencer 53	1976.
Kwinkins	S	Ranger 26	1978 - 80
Kyanna II	P		1964 - 74
Kyhita	P	32' Chris Craft	1981 -
La Beverie	P		1970 - 73
La Contessa II	P	60' Offshore cruiser	1981 -
La Donna	P	32' Chris Craft	1959 -
La Feline	P	85' Fast Cruiser	1981 -
La Mouette III	S	29' Cove	1971 - 75
La Parvenue	S	28' Sunstar	1983 -
Lady Emma	S	San Juan 24	1977 - 79

Yacht Name	Power Sail	Description	Year Book(s) Listing
Lady Jay II	P		1975 - 79
Lady Mary	P	50' Gulf Commander	1981 -
Lady Meg	S	44' Spen. 1330	1980 -
Lady Meg II	S	Soling	1970 - 74
Lady T	S	Ganbare 35	1974 - 75
Lady T	S	Spencer 1330	1985 -
Lady Theresa	P	32'	1983 -
Lady Vit	S	Thunderbird	1975.
Lady Vit	S	C&C 35	1979 - 82
Lady Vit III	S	Ericson 29	1973 - 78
Lady Waites	S	Niagara 35	1982 -
Lamna	S	Shark 24	1973.
Lampoon	S	Peterson 30	1985 -
Lanikai	P	58.6'	1974 -
Lantzville Laughter	S	Laser	1983 -
Lara	S	Ericson 32	1967 - 81
Laramie	P	35' Trawler	1982.
Laredo	P		1973 - 78
Larus	S	Spencer 31	1969 - 75
Laurus - 2	S	Ont 32	1976 -
Lascar	S		1975.
Later	S	Star	1976 - 77
Latin Lady II	P		1968 - 83
Lazee Gal	P	63'	1953 -
Le Bateau	S	Swift. 24	1979 -
Lee Sea	S	Crown 28	1978 -
Leda	P	41' Canoe Cove	1981 -
Lee Way	P		
Leeward	P		1978.
Legend II	P		
Legoli	P		1973 - 74
Leilani II	P	25'	1957 -
Leisure World	S		1974.
Lemming	P	25' Carver	1983 -
Leomara	P		1976 - 78
Leprechaun	P		1968 - 72
Lequime	P		1975 - 82
Let-It-Be	S	Lightning	1971 - 74
Let's Go	P	25' Cabin Cruiser	1981 -
Level Crossing	S	Pet. 35	1978 - 79
Liat	P	36' Trojan	1981 -
Liat II	P		1979.
Liberator	P		1979 - 80
Liberator	S	Spd. 26	1979 - 80
Liberty Bell	P	27' Chris Craft	1983 - 84
Lickity Split	P	38' Magnum	1983 -
Lido	S	25' Sloop	1980 -
Linus II	S	Fireball	1977 - 80

Yacht Name	Power Sail	Description	Year Book(s) Listing
Linus II	S	Flying Junior	1970 - 71, 80, 82
Lisa II	P		1972, 1974 - 81
Little Allure	S	25' Sloop	1973, 74.
Little Eagle	P	17'	1983 - 84
Little Jean	P		1966 - 71
Little John	S	Geary	1967 - 71
Little Liza	P	24' Zeta	1982.
Little-Liza	S		1983 -85
Little Liza	P	24' Zeta	
Livy III	P		1972 - 75
Livy IV	P		1976.
Loafer	P		1967 - 72
Loafer III	P		1973 - 74, 1977 - 78
Lofer Fire	P	25'	1979 - 82
Loch Sloy	P	40'	1979 -
Lollipop	S	30'	1966 - 71
Lollipop	S	30' cutter	1981 -
Long Gone	S	42' Sloop	1970 - 72, 1974.
Loon	S	34' Sloop	1970 -71
Loon	S	CS 27	1981 -
Lorelei	S	Cal 28	1976 - 79
Lorelei	S	Dragon	
Lori	S	25'	1978 - 80
Lorna Jean	S	33' M/S	1974 -
Lou Anne	P		1979 - 80
Louenda	S	28' Sloop	1978 - 80
Loup de Mer	S	Cal 27	1978 - 79
Luana	P		1975 - 78
Lucky Ducks II	P		1979 - 80
Lucky Ducks II	S	Alberg 37	1976 -
Lucky Seven	S	San Juan 77	1979.
Luna-Sea	S		1974.
Lutra	S	30' Hunter	1971 - 75
Lytescary	P	41' Canoe Cove	1971 - 72, 1974 -
Ma Coeur	S	28' Sloop	1971 - 73
Ma Petite	P	31' Command Bridge	1982 -
Machete I	S	40'	1983 -
Machete II	S	57'	1983 -
MacWester	S	C&C 25	1981 -
Mad Dash	S	Dash 34	1983 -
Madhatter	S	30' Hunter	1972 -
Madness	S	505	1980.
Maestro	S	41' Newport	1985 -
Magic	S	Citation 34	1981 -
Magic	S	Cal 20	1982.
Magic Clam	S	Cal 29	1977 - 78
Magic Cloud	S	Isl 36	1976 -
Magician	S	C&C 37	1984 -

Yacht Name	Power Sail	Description	Year Book(s) Listing
Magnum	S	C&C 33	1979 -
Mahri	S	C&C 27	1976 - 77
Mahri II	S	C&C 35	1978 - 82
Mai Tai	S	Annapolis 44	1964 - 72, 74 -
Magister Ludi	S	Finn	1977 - 80
Maid Silva	S	40' Ketch	1969 - 74
Maka Ina	S	28'	1977 -
Makai	P		1969 - 72
Makai	P	32' Uniflite Sport Sedan	1980 -
Makai II	P		1973.
Makunui	P		1972 - 74
Maku Nui	P	42' Chris Craft	1980 -
Malacandra	P	45' Grenfell	1971 -
Malecite	P		1958 - 73
Maliseet	P	31'	1979 -
Mamateek	S	C&C 35	1972 - 75
Mamateek	S	Valiant 40	1978 -
Mamitch	P	24'	1974 -
Mana	S	25'	1973.
Mana	P		1973 - 78
Mana II	P	40'	1979 - 84
Manitu	P		1979 - 80, 82.
Man-O-War	P		1979 - 80
Manu-Kai	S	Ericson 27	1977 - 78
Many A Green Isle Needs Must Be	S	Laser	1980 - 81
Marada	P	36' Trawler Grand Banks	1981 - 84
Marada	P	48' Motor Yacht	1985 -
Maralex	P		1972 - 74
Marauder	P	24' speedboat	1981 - 83
Marauder	P	30' Bayliner	1984 -
Marbrisa	P	40' Trawler	1981 -
Marcelle II	S	32' Sloop	1964 - 72
Marecka	S	Cat 30	1980 - 83
Margarita	S	46' Custom	1985 -
Marhenurh	S	SJ 24	1978 -
Maria XI	S	CS 36	1982 - 83
Marigold	S	24' Riviera	1973 - 78
Marigold	S	C&C 34	1983 -
Marillyce	P		1957 - 73
Mariposa	P		1979 - 81
Marita	S	Ranger 33	1981 - 84
Mark III	P		1963 - 71
Mark Burr	S	Flying Dutchman	1973.
Markel	S	Alberg 37	1973 -
Marlak	P	Bayliner 25	1985 -
Marla-Keran	S	Ericson 32	1978, 1980 - 81
Marlyn IV	P	52' Monk/McQueen	1970 -



Yacht Name	Power Sail	Description	Year Book(s) Listing
Marmara	P		1972 - 78
Marnie	S	36' Col.	1972 - 76
Marguerite	S	Cal 27	1973 - 75
Marquis II	P		1973 - 74
Martini	S	Lightning	1971.
Martlet II	P		1971 - 72
Maruss	P	19' Sea Ray	1974 -
Marvin K. Mooney	S		1975.
Marvin K. Mooney	S	29' Ericson	1977 -
Marwend II	P		1976 - 78
Marwend III	P	76' McQueen	1980 -
Mary Anne	P	40' Chris Craft	1983 -
Mary Bower	S		1956 - 71
Mary Hester	S	Cal 20	1964 - 73, 75 - 77
Mary J	P	52' Grenfell	1973 - 76
Mary J	P	76' Monk/McQueen	1977 -
Matador	S	Columbia 26	1972 - 75
Matoosk	S	29' Sloop	1972 - 74
Maud	P	22'	1972 -
Maui Lu	P		1974 - 77
Mauri	P	Formula 26'	
Mauri IV	P	30' Sea Ray	1983 - 84
Maus	S	32' Island Gypsy	1983 - 84
Maus	S	36' Sea Ranger	1985 -
Maverick III	S	32' Sloop	1969 - 74
Maxwell	S	T-Bird	1983 -
Maya	S	Trintella 44	1974 -
MBG III	P		1979 - 80
MBG III	P	25' Bertram	1983 -
Medina	S	Martin 29 Sloop	1975 - 80
Medosa I	P		1975.
Medosa II	P		1978 - 80
Melampus	P	36' Cruiser	1971 -
Melawahna	S	C&C 27	1978 -
Mele Kai	P		1974 - 75
Mello Yello	S	27' Mirage	1983 -
Mello	S	San Juan 24	
Mellow Yellow	S	Sabot	1971 - 73
Meltemi	S	San Juan 24	1978 - 82
Memory I	P	24'	1983 -
Meridian	S	Cutter 37	1976 -
Meridian Passage	S	C&C 35	1975, 1979 - 81
Meridian Pasage	S	Spencer 44	1976 - 77
Meridian Passage	P	36' Albin Trawler	1982 - 84
Meridian Passage II	S	Spencer 1330	1979 - 81
Meridian Passage III	S	Reliance 37	1982 - 84
Merlin	S	Nicholson 32	1976 -
Merri-Lee II	P		1969 - 73

Yacht Name	Power Sail	Description	Year Book(s) Listing
Merriment	S	Ont 32	1976 -
Merry Maid	S		1975.
Merrymaid	S	29 Paceship	1976 -
Merry Muses	S	½ ton 30	1978.
Miburro III	P		1978 - 80
Microwave	S	25' Yamaha	1982 -
Midnight	P		1971 - 72
Midnight II	P		1973.
Midnight III	P	48'	1976 - 81
Midnight Gambler	P		1979 - 80
Midnight Special	S	Hughes 38	1976 - 77
Migration	S	33' Yamaha	1982 - 84
Mijo	P		1978 - 80
Millbanke	S	Peterson 33	1983 - 84
Milltown	S	Custom 41'	1979 - 84
Minnie W	P	24' Champion	1981.
Minotaur	P	25' Bertram	1970 -
Minstrel	S	Thunderbird	1971.
Mintaka	S	30' Sloop	1971.
Mintaka II	S	San Juan 24	1976 - 79
Mir	S	76' Ketch	1967 - 73
Mirage	S	25' O'Day	1977 - 81
Mirajo	P		1975.
Miranda II	S	33' Yamaha	1985 -
Mishwa	S	28' Sloop	1972 - 75
Miss Emily	P		1968 - 69, 70 - 73
Miss Melody	P		1968 - 71
Miss Peach	S	Fly Jr.	1965 - 71
Mr. Destroyer	S	Fireball	1979 - 80
Mistral	S	Dragon	1973 -
Misty	S	Col 26	1977-
Mistylan IV	S	Cal 2-46 Ketch	1976 - 80
Mistylan V	P	44' Gulf Star	1980.
Mithril	S	Martin 29	1974 - 78
Mithril	S	Fraser 41	1981 -
Mixed Emotions	P	Shephard 47'	
Mokum	S	Cal 25	1974 - 75
Mokum	S	33'	1978.
Mollie Brown	P		1967 - 79
Molly Brown	S	23' Sloop	1985 -
Molly Hogan II	S	30' Sloop	1971 - 73
Moment's Notice	P		1975.
Momentum	S	30'	1979 - 80
Momentum II	S	39 Fast Passage	1981 -
Montagnais	P	72' Cruiser	1979 -
Moody Lady	P	41' Cruiser	1975 -
Moomba	S	32' Sloop	1970 - 72
Moomba	S	Disc 32	1974 -

Yacht Name	Power Sail	Description	Year Book(s) Listing
Moonbird	S	Disc 37	1979 -
Moonraker	P	35' Chris Craft	1981 - 83
Moonraker 4	P	27' Searay	1985 -
Moonshadow	S	Ontario 32	1983 -
Moon Song	S	Alberg 30	1976 - 81
Moonspinner V	S	Alberg 30	1974 - 82
Moonwind	S	Newport 28	1976 - 78
Moonwinks	P	45'	1967 - 80
Moonwinks	P	64' Monk McQueen	1979 - 83
Moppet	S	39' Ketch	1973 -
Morag	S	Morgan 27	1974 -
Mor-Dreams	P	38' Chris Craft	1983 -
Morning Light	S	Coronado 34	1978 - 81
Motivation II	S	C&C 38	1985 -
M.R. Cliff	P		1975 - 77
Mukluks	S	36' Contessa 1 Ton	1981 -
Muldoon	P	38'	1983 -
Mumbles II	S	27' Sun	1982 -
Murphy Gal	P		1976 - 81
Murrelet	S	San Juan 24	1981.
Mustique	P	27' Bayliner	1983 -
Mutineer	P		1963 - 75
Mutineer III	S	Columbia 36	1976 - 81
My Fair Lady II	P		1964 - 77
My Fair Lady II	P	35' Diesel	1980 -
My-Joy II	P	31' Uniflite	1982 -
My Panacea	P		1971 - 72
My Pleasure	S	T-Bird	1981 -
My Reverie	S	38' N.S.T.	1973 - 75
My Toy	P		1978 - 79
Mystere	P		1985 -
Mystique	S	Columbia 22	1973 - 74
Mystique	S	33' CS	1985 -
Nahanni	S	T-Bird	1974 -
Nahanni	P		1976.
Nahanni II	P		1974.
Nahanni III	P		1972 - 73, 75., 77 - 80
Nakina	P		1972 - 79
Naknek	S	Spencer 53	1973 -
Namba	S	C&C 39	1974 -
Nan	S	D12	1964 - 71
Nanika	P		1985 -
Nantuk	S		1966 - 71
Natannis	S	Cal 29	1975 - 77
Natica	S	Maple Leaf 30	1981 - 82
Natomah	S	38' Sloop	1972 - 80
Natomah II	S	37' Cutter	1981 -
Natural High	S	C&C 30	1980 -

Yacht Name	Power Sail	Description	Year Book(s) Listing
Nauti Gal III	P		1973 - 74
Nautilus . . .	S	NS 30	1974 - 78
Nebo	S	33' Sloop	1972.
Nebo	S	Ranger 33	1974 -
Neechiemose	S	47' Ketch	1970 - 71
Neechiemose	S	50'	1975 - 79
Neepawa	P	50' Gulf Commander	
Nemiskam	S	34' Sloop	1980 -
Neo II	P		1968 - 72
Neo III	S		1974.
Neo III	P		1975 - 80
Nephele	S	Swift 24	1974 - 83
Nephele	S	Cooper 353	1984 -
Neptune	S	28' Cutter	1961 - 72
Neptune	S	Normandy 28	1974 -
Neptune	S	Columbia 22	1974 - 78
Nereid	P	30'	1979 -
Nerissa	S	Alberg 30	1973 - 78
Nerissa II	S	C&C 30	1981 -
Never	S	San Juan 24	1976.
New Spirit	S	Isl 37	1976 -
New Wave	P	32' Bayliner	1985 -
Niantilik	P	39' Trawler	1983 -
Niatross	S	48' C&C Landfall	1985 -
Nickles & Dimes	P		1977.
Nighean Aluinn	S	M.L. 30	1971 -
Nighthawk	S	C&C 35	1982 -
Night Moves	S	Martin 24	1981 - 83
Nightcap	P		1963 - 72
Nijinsky	S	J-24	1981.
Nimba	P		1969 - 74
Nimbus . .	S	Crown 34	1980 - 83
Nimbus	S	Spencer 1330	1984 -
Nina	S	28' Crown	1985 -
Nini	S	Sabot	1971.
Niska	P		1971 - 72, 75 - 79
Nitecap	P	44' Trojan	1981 -
No Name	P	Lynnwood 24'	
Noelani	P	42' Cruiser	1973 -
No-Ka-Oi	P		1977 - 78
Nona	S	25' Sloop	1968 - 72
Nona	S	C&C 30	1974 -
No-No	P		1975.
Noreanne	P		1948, 1951 - 74
Norell	P	42' Tri-Cabin Trawler	1982 -
Norfinn	S	C&C 38	
Nor-Jak	S	Columbia 26	1972 - 77
Nor-Jak	S	Cor 30	1978 - 84

Yacht Name	Power Sail	Description	Year Book(s) Listing
Norsal	P		1938, 40, 46 - 49, 1951 - 73
Norseman III	S	8 Metre Sloop	1981 - 82
Nortada	S	49' Ketch	1976 - 81
Nortada	S	50' Ketch	1983 -
Northern Dancer	S	43' Ketch	1982 -
Not Ours	S	Laser	1983 -
Nova Spirit	P		1974 - 81
Nova Springs	P	77' Wood Yacht	1983.
Nova Springs	P	85' Monk/McQueen	1984 -
Nu-Vee	P	42' Trawler Type	1982.
Nymphe	S	Star	1984 -
Nyon III	S	54' Ketch	1978 .
Nyon III	S	60' Ketch	1979 -
Obsession	S	Dragon	1981 -
Ocean Belle	P	60' Cruiser	1967 - 71, 80 - 81
Ocean Oasis	P		1970 - 71, 73 - 80
Ocean Oasis	P	32' Ennas	1982 -
Odalisque II	S	Misc.	1978 - 80
Oden	S	Disc. 32	1977 -
Oenone	S	C&C 30	1980 -
Offshore Breeze	S	Cal 2-29	1980 -
Ohe	S		
Oho	S	39'	1972.
O'Jala	P		1973 - 80
Old Bird	S	T-Bird	1985 -
Old Blue	S	Ontario 32	1979.
Ole II	S	Spencer 35	1970 - 72, 74 - 81
Olympus	S	30'	1967 - 71
Omea	P		1971 - 72
On Call	S	C&C 32'	
Onaway	S	C&C 27	1973 - 84
Ondalasie	P		1973.
One Trick Pony	S	J 24	1983 -
00	S	C&C 27	1983 -
Oona	S	34'	1972 - 76
Opus #1	S	Soling	1973-74
Opus	S	Soling	1975 - 78
Oracle	S	Catalina 27	1981 - 83
Oracle	S	C&C 30	1984 -
Orange Blossom Special	S	Catalina 27	1973 - 74
Orange Bloss. Spec. II	S	Cal 29	1976 - 79
Orange Bloss. Spec. III	S	38' Hughes MK III	1980 -
Orango-Tang	S	C&C 35	1979.
Orca	S	C&C 25	1976 -83
Orca	S	C&C 34	1984.
Organizer	P		1985 -
Orielle	S	T-Bird	1965 - 71



Yacht Name	Power Sail	Description	Year Book(s) Listing
Oship	P		1975 - 80
Oship II	P		1982.
Osprey	S	30 sq. Metre	1973 - 76
Osprey	P	24' Sport Fish.	1981.
Ouija	S	Columbia 26 Sloop	1971 - 75
Our Pigeon	S	NS 26	1978 - 80
Outrageous	P	28' Bertram	1980 - 81
Overdraft Too	S	38' C&C	1978 -
Overeasy	S	C&C 30	1979 -
Owaissa	P	58' Cohoe Class	1966 -
Owls Nest	P		1977 - 78
Pabet	S	C&C 35	1975 - 77
Pabet	P		1978 - 80
Pabet	S	Maple Leaf 42	1981., 83 -
Pacemaker	S	Dragon	1978 - 81
Pacer	P		1967 - 71
Pachena	S	Pet 2 Ton	1978 - 83
Pachena	S	51'	1984 -
Pacific Charger	P	36' Uniflite	1983 -
Pacific Crown	P		1977, 79 - 80
Pacific Dream	P	36' Cruiser	1978 -
Pacific High	P		1974, 76.
Pacific High	S		1975.
Pacific High	S	Coronado 32	1980.
Pacific Knight	P	26'	1980 -
Pacific Pup	P	23'	1983 -
Pacific Rose	S	37' Beneteau	1985 -
Pacifier	S	Dragon	1977 - 81., 83 -
Paddington	S	C&C 27	1980 -
Paegan	P		1977 - 78
Pailolo	P	34' Trawler	1980 -
Pam	S	Fly Jr.	1968 - 71
Pamper II	P	34'	1960 - 67, 69 -
Pamper III	P	46' F.D. Cruiser	1968 - 84
Pampero	S	Landfall C&C 42	1980 -
Panacea	P	36' Uniflite, sport sedan	1981 - 84
Pandemonium	S	Santana 20	1982 -
Pandora of Rhu	S	48'	1955 - 79
Paniolo	S	L36	1966 -
Papillon	S	26 Paceship	1977 -
Paramount	P		1974 - 75
Paramount II	P		1952 - 72
Parkaway	P	22' Glas Ply	1975 - 84
Parkaway	P	28' Bayliner	1985 -
Park Royal	P		1973 - 76
Partita	S	30'	1973 - 76
Passat	S		1974.
Patrician II	P	42' Trawler	1975 -

Yacht Name	Power Sail	Description	Year Book(s) Listing
Paul-Sea	P	Lynnwood 24'	
Pax	S	Martin 29	1972 - 78
Peachy	S	23' Clipper	1978 - 83
Pecadillo	S	24' Yamaha.	1985 -
Pegasos	S	Laser	1983 -
Pegasus	S	Fly Jr.	1970 - 71
Pela-Costa	P	72' Monk/McQueen	1982 -
Pelekan	S	26' Sloop	1970 - 73, 75.
Pelican Punch	S	Ranger 30	1981.
Pen Dragon	S	San Juan 30	1979 -
Penelakut	S	46' Sloop	1964 -
Penny	S	Fly Jr.	1964, 66 - 71
Penny	P	36' Uniflite	1979 -
Penucha	P		1973 - 74
Penucha II	S	NS 40	1975 - 78
Penucha II	S	40' Ketch North Star	1980 -
Pepper	S	Cal 27	1976 - 79
Pepper II	P	24' Cruiser	1980 - 81
Peppermint Patti	S	Laser	1976 - 79
Peppi II	P		1965 - 75
Peppy San	P	65' Cruiser	1971 -
Perfect Recipe	S	Swan 40	1979 -
Perfectionist	P	24' Robalo	1983 -
Persephone	S	34' Sloop	1972 - 74
Peter J.	S	Catalina 27	1979.
Petrushka	S	Peterson 35	1982.
Phaedra	S	End 35	1976 -
Phaedrus	S	Ericson 27	1984 -
Phantom	P		1983 -
Phoenix	P	32' Fairline	1985 -
Pilgrim IV	S	40' Trintella	1978 -
Pimpernel	S	Dragon	1984 -
(See Scarlet Pimpernel)			
Pike's Pick	P	30'	1965 - 78, 80 - 82
Pink Cloud	S	MS NP 40	1963 - 72, 75, 80.
Piquero	S	Ont. 32	
Pisces	P		1977 - 79
Pisces	S	Force 5	1978.
Pladda	P		1961 - 72
Playwright	S	Rawson 30	1974 - 83
Playwright	S	40' Sloop	1984 -
Pleiades	S	40' Swan	1985 -
Plum	S	Seahawk 25	1978 -
Plunder	P		1974 - 79
Po Chai	S	27' Sloop	1972 - 73
Pobble	S		1975 - 76
Point Hope	P		1972, 74 -
Polanesia	P		1970 - 74

Yacht Name	Power Sail	Description	Year Book(s) Listing
Ponape	P		1982 -
Poof	S	22' Sloop	1971 - 76
Pookie II	P		1976.
Porpoise III	S	Disc. 47	1969 -
Portage	S	25'	1982 - 83
Portage	S	7.5 Metre	1984 -
Poseidon II	P	24' Zeta	1982 -
Possum II	S	20' Cal	1984 -85
Possum III	S	25'	
Powder Snow	S	C&C 35	1975 -
Praxis	S	C&C 35	1982 -
Prelude	P		1974, 76, 78 -
Preying Manta	P		1976 - 80
Prime Plus	P	34'	1980 -
Prime Time	P	37' Canoe Cove	1983 -
Prince	P		1965 - 71
Princess Tian	S	Sloop 37	1976 -
Private Dancer	S		
Prolyon	S		1985 -
Promise	S	San Juan 24	1985 -
Prophecy	S	35 Peterson	1977 -
Providence	S	40' Ketch	1972.
Prudence	S	Star	1971 - 73
Puck	P	27' Bayliner	1985 -
Puff	S	Dragon	1965 - 78
Puff N'Stuff	P	50'	1978 - 84
Puffin II	S	L 36	1970 -
Pursuit	P	20' Tiara	1982 -
Pursuit	P	25' Sport Fish.	1983 -
Pupcole	S	22' O'Day	1983 -
Puppeteer	S	Cooper 416	1982 - 84
Puss n' Pat	P	26'	1980 - 83
Qualicum	S	Cal 34	1974 -
Queen Bee	P		1976 - 79
Queen of Gossip	P		1973 - 75
Queen of the "C"	P		1970 - 79
Querida	S	Catalina 27	1979 - 80
Quest III	S	HR 28	1969 -
Question Mark	P		1979 - 80
Quicksilver	S	CS 27	1981 - 84
Qui Echappe	S	Flying Dutchman	1971 - 74
Quiet Tune	S	Spencer 1330	1978 - 79
Rabbit	S	Contessa 30	1976 - 78
Radagast	S	Laser	1980 - 81
Radiant	S	Yamaha 36	1982.
Radiant II	P		1985 -
Rae-Jon	P		1972 - 75
Ragtime	S	33 Sloop	1984 -
Raider	P	Bertram 28	

Yacht Name	Power Sail	Description	Year Book(s) Listing
Rainbird	S	26'	1972.
Rainbow	S	Soling	1970 - 72
Rainbow Chaser	S	52' Nauticat	1985 -
Rainbow's End	S	North Sea 34	1982 -
Ramada	S		1974 - 76
Ramada	P	53'	1983 -
Ramble	S	C&C 35	1977 -
Rampage	P		1976 - 77
Rampant	S	Wylie 31	1980 -
Rana	S	C&C 35	1985 -
Rana	P		
Random	P	22'	1983 - 84
Random Spirit	P	41' Tri Cabin	1982 -
Rao	P	54' Cruiser	1975 -
Rapid	S	Buchan 37	1970 -
Rascal	S	27' CS	1982 -
Ratsy III	P		1977 - 79
Ratsy IV	S	M.L. 42	1980 -
Raven	S	C&C 27	1985 -
Resucitation	S	C&C 40	1985 -
Red Baron	P		1976 -
Reflections	S	42' U.S.	1983 - 84
Reiko	S	30' Alberg	1975 -
Renegade	P	28' Bertram	1982 -
Replay	P	41' Tri Cabin	1982 -
Result	P	33'	1974 -
Rhinegold	P	35'	1911 - 81
Rhonda L	P		1970 - 71
Rhubarb	S	30' Maple Leaf	1971 - 77
Rhumara	S	30'	1977 - 78
Rhumara	S	M.L. 30	1980 -
Rhumba	S		1976.
Rhumbrunner	S	Newport 28	1977 - 79
Ribbit	S	Coronado 27	1977 -
Rikki Tikki Tavi	S	Ericson 35	1973 - 79
Rim-Jim	S	C&C 35	1976 -
Riot IV	P	36' Grenfell	1963 -
Ripple Point	P	37' Tri Cabin	1983 -
Rising Star	P		1960 - 72
Rival	S	Sceptre 36	1981 -
Rival IV	S	Cal 2-46	1979 - 81
Road Runner	S		1975.
Robbie Burns	P		1969 - 72
Robendam	P		1978 - 79
Robi	P		1977 - 78
Robi II	P		1972 - 75
Robi III	P		1976 - 80
Robi IV	P	40'	1982.
Rockabye II	P	38' Monk/McQueen	1958 -

Yacht Name	Power Sail	Description	Year Book(s) Listing
Rock 'N Roll	S	Fireball	1979.
Rocket	S	Windsurfer	1981.
Roeinante	S	40'	
Roma	P		1951 - 64, 66 - 74
Ronlis	S	26' Hughes	1983 -
Rose Point	P	40 B.D.	1967 -
Roset	P		1972 - 74
Roving Eye	S	Cal 28	1977 -
Royal Rose	S		1985 -
Rum Go	S	Laser	1980.
Runaway	P		1975 -
Running Shoe	S	30' Sloop	1970 - 72
Running Shoe	S	35' Sloop	1974 - 76
Running Tide	P	32'	1974 -
Running Tide II	P	36' Grenfell Sedan Cruiser	1980 - 81, 83 - 84
Running Tide III	P		1979 - 81
Rural Route	P		1976 - 77
Rusalka	S		1985 -
Rusholme	P	43' Grenfell	1983 -
Rus-Lor	P		1958, 62 - 73
S Maug	S	Enterprise	1980.
Sabbatical	P	30' Sedan Cruiser	1980 - 82
Sabbatical	P	30' Grenfell	1985 -
Sabbatical II	S	27' Catalina	1978 - 79
Sabot	P		1979.
Sabre II	S	37' Sloop	1971.
Saeta	S	36' Islander	1976 - 81
Saeter	S	30' Alberg	1970 -83
Saeter	S	Islander 36	1984 -
Saga	S	C&C 35'	1972 -
Sagitta V	P	45' Trawler	1981 -
Sahsim	P	27' Bayliner	
St. Mar	P		1985 -
Sally Fourth	P		1977 -80
Salt Shaker	P		1974 - 77
Salt Shaker	P	28'	1983 - 84
Salt Whistle	S	30' Beneteau	1985 -
Saltair II	P		1974 - 80
Salto	P		1977 - 80
Saltpeter	S	C&C 30	1980 -
Saltpeter	P	28' Bertram	1983 - 84
Saltpeter	P	24' Zeta	1985 -
Salty Cat	S		1974 - 75
Sam Goosly	S	Tasar	1980.
Sam I Am	S	28 Ranger	1976 -
Sambal	S	San Juan 7.7	1982 -
Sambuca	P	33' Chris Craft	1980 - 82
Sampan	P		1972 - 75



Yacht Name	Power Sail	Description	Year Book(s) Listing
Sanaq	S	Ont. 32	1979 -
San Juan	S		1975 - 76
San-Dee-No	P		1971.
Sanda-Lisa	P		1973.
Sanderling	S	36' Sloop	1964 - 71
Sanderling	S	Albert 37	1973 - 77
Sandhopper	S		1975 - 79
Sandlewood	S	C&C 30	1973 - 74
Sandor II	P		1970 - 71, 78.
Sandpiper	S	Misc. 14'	1971, 74.
Sandpiper	P	26' Express Cruiser	1978 - 84
Sandpiper V	P	31' Cruiser	1971 -
Sandpiper VII	P	58' Yachtfisher	1981 -
Sandra G II	P		1963 - 77
Sandy Belle	S	30' Sloop	1981.
Sanfire	S	C&C 43-2	1981 -
Santa Clara	S	30' Sloop	1971 - 82
Santrina	P	20' Sabre	1977 -
Saracen	S	Martin 32	1981 -
Sarita	S	Fraser 30	1974 -
Saronia	P	32' Cabin cruiser	1938 - 40, 47, 48, 49, 53 - 72, 74 -
Saumure	S	30' Sloop	1971 - 76
Savory Seas	P		1970 - 74
Savrola	S	C&C 48 Landfall	1983 - 84
Saxony	P	68'	1969 -
"SC"	S	Laser	1981 - 82
Scampi	S	30'	1976 -
Scampie	S	29' Dragon	1971 -
Scarab	S	Buccaneer 26	1975.
Scarab	S	Cat 27	1976.
Scarlet Pimpernel	S	Dragon	1983.
(See Pimpernel)			
Sceptre	P		1972 - 78
Schatzi	P		1971 - 73
Scherzo	S	Thunderbird	1971 - 73
Schjol	S	NS 34	1978 -
Schock Wave	S	Santana 20	1978 - 79
Scimitar	P		1964 - 74
Scimitar	S	29' Sloop	1972 - 75
Scnchara	P		1975, 77 - 80
Scoma	S	25'	1972 - 73, 75.
Scorpio II	P		1982.
Scott B	S	Flying Junior	1972 - 73, 82.
Scotty-O	P	24'	1982 -
Scruples	P	26' Champion	1981.
Sea Bear	P	45' Monk Tri-Cabin	1981 - 82
Sea Breeze	P		1965 - 71

Yacht Name	Power Sail	Description	Year Book(s) Listing
Sea Cup	P		1979 - 81
Sea Dream	S	32'	1982 -
Sea Dreams	S	34'	1973 - 74
Sea Dreams	S	MS	1976.
Sea Ducer	P		1976.
Sea Eagle III	P	38' Hatteras	
Sea Eye	P	24' Zeta	1981 -
Sea Fern	S	Spencer 51	1975 - 79
Sea Gulf	S	10' Dinghy	1980.
Sea Gull	P		1976 - 80
Sea Gull	P	10'	1982 -
Sea Hawk	P		1974, 78 - 80
Sea Hawk	P	Bertram 33	
Sea Jet	S		1975 - 76
Sea Lark	P		1970 - 72
Sea Loon	S	Ranger 29	1982.
Sea Lure	P		1960 - 72
Sea Lure	P	34'	1975 - 83
Sea Lure II	S	40' Ketch	1983 -
Sea Pacer III	P	20'	1980.
Sea Pea I	P	32' Chris Craft	1975 -
Sea Pic	P		1976 - 78
Sea Q	P	82' Monk/McQueen	1981 -
Sea Q	P	71' Twin Diesel	1972 - 80
Sea Raider	P		1975, 77 - 82
Sea Ray I	P		1979 - 80
Sea Runner	P		1974 - 78
Sea Serfer	S	Flying Junior	1970 - 73
Sea Shanty	P		1973 - 78
Sea Singer	S	Crown 28'	
Sea Star	P		1966 - 77, 79.
Sea Sure	P	41' Cruiser	1985 -
Sea Three	P		1978 - 79
Sea Truck	P		1971 - 75
Sea Urchin	P	34' Trawler Cruiser	1980 -
Sea Wind	P	24'	1981 - 82
Sea Wizard	S	12'	1967 - 71
Seabird	S	Whitehall 18	1979 - 83
Seafarer	P		1974.
Sea-Fern	S	Spencer 51	1981 -
Seagal	P	32'	1981 -
Seagul	S		1975.
Seahome	P	37' Alcan	1970 -
Seal	P		1973 - 82
Seal	P	26'	1983 -
Sealander	P		1976 - 80
Seamait	P		1969 - 79
Seaplay	P		1974.

Yacht Name	Power Sail	Description	Year Book(s) Listing
Seaplay II	P		1960 - 73
Sea-Ray	S		1974,
Seasong	P		1973 - 76
Seasong II	P		1975 - 76
Seashaker	P		1970 - 72, 75 - 76
Seata	S	26' Sloop	1971 - 75
Seatex	P	52'	1967 - 81
Seatex	P		1983 -
Sea-Thief	P		1979 - 80
Seatiger	S	33' Viking	1977 - 79
Seaward II	P	73' Cruiser	1977 -
Seawyf	S	35' Sloop	1970 - 73
Second Chance	S	27'	1970 - 73
Second Wind	S	20' Sloop	1972 - 75
Second Wind	P	28' Uniflite	1982 -
Secret Dreamer	P	24'	1983 -
Secret Rover	P	36' Trojan	1979 -
Sedna	S	28' Sloop	1982,
Sedna	S		1985 -
Selah	S	Tanzer 10.5	1985 -
Selene	S	29' Ranger	1983 -
Senang	S	27' Cal T 2	1981 -
Senator II	P		1972,
Senga	S	Thunderbird	1974 - 75
Sengelene	S	Yamaha 30	1980 -
Senioriva	P		1971,
September Song	S	34' Aloha	
Sequel	P	67'	1974 -
Seranade	S	Maple Leaf 48	1980,
Serapis	S	L. 36' Sloop	1963 - 74, 77 - 79
Seren	S	30' Sloop	1971 - 81
Serendipity	S	28' Sloop	1962 - 72
Serendipity	S		1976,
Seva	P		1974 - 78
Seven	S	C&C 35	1978 - 83
Seven	S	J 36	1984 -
Sextent II	S	Coronado 35	1979 - 82
Shadow	S	29'	1973 - 74
Shadows	S	Crown 34	1979 -
Shadow Fox	S	J-24	1981 - 82
Shadow Sax	P	24' Grew	
Shadowfax	P	24' Grew.	1980 - 81
Shalana	P	54' Monk/McQueen	1974 - 84
Shamal	S		1975,
Shaman	P		1969 - 71
Shaman II	P	45'	1974 -
Shanghai IV	P	41' Canoe Cove	1980,
Shannon II	P		1985 -

Yacht Name	Power Sail	Description	Year Book(s) Listing
Sharay	P	51' Monk/McQueen	1976 -
Sharel	P	22' Cuddy Searay	1982 -
Shark	P		1977 - 82
Sharp Rock	P		1979 - 80
Sharp Rock	P	22' Searay	1982 -
Shatzi	P		1974.
Shazam	P		1975 - 79
Shaynoo	P	31'	1981 - 84
Shellani	P	53' Hatteras	1985 -
Shel-Lor	P	41' Canoe Cove	1981 -
Shenandoah II	P		1973 - 74
Shillelagh	S	21'	1973.
Shimna	S	C&C 30	1973 - 76
Shinz	S	Star	1975.
Shirl-E II	P		1976.
Show Boat	S	Martin 32	1981 -
Show Girl	P		1972.
Shrike	S	Peterson 35	1980.
Shumba	S	Lancer 30	1978 -
Shut-Out	P	86' Express	1980.
Siberani	S	75' Ketch	1978 - 81
Signo riva	P	1979.	
Sidewinder	S	Aquacat	1969 - 71
Signo Riva	P		1979.
Signoriva	P		1974 - 76
Silver Bullet	S	Martin 242	1985 -
Silver Cloud	P		1977., 79 -
Silver Cloud II	P	77'	1978.
Silver Spirit	P	63'	1983 -
Silver Spray V	S	Columbia 30	1975 - 80
Silverline	P		1983 -
Simba	S	30' Sloop	1982 -
Simoon	P		1979.
Simoon II	P		1969 - 77
Sinbad II	P		1979 - 81
Sinbad II	P	26'	1983 -
Sine	S	Soling	1971 - 77
Sir Dukes	P	32' Trojan	1978 -
Sirrocco III	P	32' Sport Fish	1981 -
Siteach Mhara	S	24'	1973 - 76
Sitka	S	33' Peterson ¾ Ton	1981.
Siv Chi	S	Sloop S	1985 -
Skana	P		1976 - 78
Skana	S	Thunderbird	1979 - 80
Skana	S	Spencer 31	1969 - 82
Skedaddle	P	36' Uniflite	
Skedans	S	48' Trintella V	1977 - 81., 83 -
Ski-Daddle	P		1973.

Yacht Name	Power Sail	Description	Year Book(s) Listing
Skimmer	S	Alb. 30	1976 - 82
Skipper	S	Crown 34	1980 - 81
Skipper II	P	35' Northern	1981 - 83
Skookum	S	Thunderbird	1977 - 78
Skookum Tum Tum	S	Flying Dutchman	1972 - 74
Skua	S	Lightning	1964 - 80
Skunk	S	Dinghy	1982.
Sky Lark	P		1970 - 72
Sky One Hundred	S	Fraser 42	1982 -
Sky Wave	S	Yamaha 25	1981.
Skye	S	38 Hughes	1977 -
Slick Silver	S	Viking 34'	1985 -
Slim	S	Martin 32	1981 -
Slingshot	S	Dragon	1982 -
Slippery Seal	S	27'	1980 - 83
Slipstream	S	CS 36	1984 -
Slythy Tove	S	Ericson 35	1978 - 82
Small Slam	S	21' Snap Dragon	1985 -
Smats II	P	16'	1975 -
Smee	S		1982.
Smelzbad	P		1974.
Smilee	S	48'	1971 - 72
Smilee	S	Ericson 35	1979 - 80
Smiles	S	Maple Leaf 48	1975 - 76
Smitty	P	48' Cruiser	1958 -
Smuggler	P	Cruiser	1985 -
Snap Biscuits	P	17' Ski-Boat	1977 - 80., 82 -
Snark	S	Flying Junior	1971 - 73
Sneaker	S	Gulf 42	1974 - 81
Sneaker	P	43' Tollycraft	1982 -
Snow Goose	S	Cal 25 Sloop	1971 - 77
Sockeye	S	Chance 32/28	1977 - 78
Sojac	S	Maple Leaf 42	1975 - 80
Sojourn	P	26' Cruiser	1980.
Sol	S		1974 - 75
Solan	S	Soling	1971 - 75
Solar Driftwood	S	Viking 26	1976 - 83
Solar Driftwood II	S	26' Viking Yawl	1983.
Solar Driftwood II	S	37'	1984 -
Solitaire	P		1979 - 81
Solstice	S	U.S. 25'	1982 - 84
Solveien	S	36' Cheoy Lee	
Solveien	S	36' Cheoy Lee	1985 -
Sonora	P		1963 - 73
Sooner	S	37' Rafiki	1981 -
Soubresaut II	S	30'	
Sousa E	P		1972.
Southern Cross II	S		1976.



Yacht Name	Power Sail	Description	Year Book(s) Listing
Spanish Bankruptcy	S	Star	1983 -
Spanish Banks	S	Star	1982.
Spanish Flyer	S	San Juan 30	1978 - 80
Spartacus	P	60' Monk/McQueen	1985 -
Special	S		1977.
Spectra	S	40' Sloop	1979 - 80
Spectra	S	40' Sloop	1982 -
Spectra	S	Dragon	1977 -
Sphinx	S	Star	1976 -
Spinalong	P		1978 - 80
Spindrift	S	San Juan 24	1975., 77 - 81
Spindrift V	P		1971 - 74
Spirit	S	Dragon	1977 - 83
Spoonbill	S	Yamaha 25	1980 - 82
Spree	S	Eric 32	1979 - 84
Sprinta	S	23' Sprinta Sport	1981.
SS Dandelion	S	12' Dinghy	1977 - 80
SS 206 Gnew	P		1979 - 80
Staghound	S	40' Ketch	1958 - 72
Standfast	S	Spenn 31	1970 -
Starchaser	S	CS 36	1982 -
Starduster	S	CT 54	1977 - 79, 81 - 82
Starquest IV	P	34' Sport Fish	1969 -
Starship	P	39' Grand Mariner	
Stella G	S	Geary	1970 - 73
Stenella	S	San Juan 24	1977 - 78
Sterling Shamrock	S	Jol 30	1978 - 79
Stinger	S	Irwin 38	1980.
Stinger	P		1985 -
Stoli	S	Cooper 37	1984 -
Stone Ribs	P		1975.
Stoneribs	P		1977.
Storasen	S	Spencer 42	1981 -
Stornoway	S	C&C 27	1981 - 84
Storrada	P	48' Monk/McQueen	1984 -
Stovepipe	S	C&C 30	1981 -
Strait Up	S	Martin 242	1984 -
Streaker	S	Fireball	1975 - 77
Strike II	P	40' Pelagic	1980 - 82., 84 -
Striker	S	32' Ericson	1985 -
Strong Spirit	P	36'	1977 - 83
Struan	P	41' Canoe Cove	1972 -
Suara Laut	S	M/S 33	1976 - 78
Sucia-York	P		1977 - 79
Sujancy	S	Cal 2-27	1975 -
Suleemar	P		1976.
Su-Mar	P		1977 - 78
Su-Mar IV	P	43' Grenfell	1979 -

Yacht Name	Power Sail	Description	Year Book(s) Listing
Sum Fun	P		1972.
Summer Salt	P	55' Alaskan	1973 -
Summer Wine	P	28'	1982 -
Summersplit	P		1973 - 84
Summertan II	P		1973.
Summertime	P		1970 - 71
Summerwinds	S	48'	1969 - 72
Sun Dog	P	26' Tollycraft	1984 -
Sun Drifter	S	Catalina 30	1981 -
Sun Star	P		1975 - 84
Sunbird	S	42' Sloop	1971 - 73
Sunbird	S	SL 56	1977 -
Sundance	P		1969 - 80
Sundance	S		1977 - 78
Sundance	S	C&C 35 MK I	1982 -
Sundance Kid	S	30' Sloop	1971 - 74
Sundown	P	68'	1974 -
Sundowner	P		1972 - 77
Sunfish	S	Laser	1982.
Sunny Seas	P		1972 - 75
Sunny Seas	P	43'	1977 -
Sunshine	S	C&C 33	1982 -
Supercarrot	S	13'	1970 - 71
Surf Scoter	P	24'	1975 -
Surfer	S	Alberg 30	1966 -
Surfrider	P	32'	1983 -
Surfrider	S		1982.
Surfrider II	P		1973 - 81
Surprise	P		1970 - 71
Sushi Bar	S	36' Macgregor	
Sweet City Woman	S	Finn	1973 - 75
Sweet Pea	S	Shark 24' Sloop	1971 - 75
Sweet Thing	S	Maple Leaf 42	1981 -
Sweetie	P	17' Ariha	
Swhalee	S	26' T-Bird	1973 - 75, 77.
Swi-Ve-Lus	P		1961 - 75
Sylvia	S	Columbia 29	1969 -
Sylvia	S	Spencer 35	1981 -
Syrene I	P	75' Cruiser	1978 -
Tabasco	S	Alberg 30	1970 - 76
Taconite	P		1938, 40, 46, 48, 49, 1964 - 72, 74 - 77
Taeping	S	39'	1970 - 77
Tahini	P	42' Grand Banks	1971 -
Tahiya	S	C&C 35 MK II	1982 - 84
Tahiya	S	Peterson 35 MK II	1985 -
Tahn	S	26' Sloop	1969 - 73
Tahuna	S	33' Cutter	1970 - 84

Yacht Name	Power Sail	Description	Year Book(s) Listing
Tai-Fu	S	M.L. 48	1980 - 84
Taipan	S	28' Sloop	1974 - 76
Tajow	S	37' Ketch	1973, 78 - 82
Take 5	S	C&C 30	1978.
Takulli	P	60' Cruiser	1963 -
Taliesin	S	33' Fjord	1972 - 80
Talisman	S	Col 26	1974 - 76., 78.
Tally Ho	P	40' Tollycraft Tri Cabin	1982 -
Tamar C.	S	44' Ketch	1974 -
Tamar C.	P		1974.
Tamar II	S	33' Sloop	1969 - 73
Tamarisk	P	38 Chris Craft	1979 -
Tamarkand	P	36' Canoe Cove	1983 -
Tamika	P		1975 - 76
Tamora	P	34' Mainship	1978 - 79, 81 - 83
Tan Tsin	S	Pel 30' Sloop	1972 - 75
Tanda	P	46' Coho	1974 -
Tangaroa	P	50' Trawler	1980 - 83
Tangent	P		1971 - 72
Tangle Fleet	P		1974.
Tangerine	S	40' Sloop	1978 -
Tanqueray	P		1978 - 79
Tanqueray	P	20'	1982.
Tantalisa	S	Dragon	
Tantramar	S	28' Crown	1973 - 81
Tantramar	S	39' Hughes - Columbia	1983 -
Ta-Ria	S	D12	1964 - 71
Tara	P	34' Trawler	1984 -
Taranga	S	NP 28	1974 - 79
Taranga	S	Fast Passage 39	1980 -
Targogan	P	72' Monk/McQueen	1974 - 81
Targogan	P	85' Monk/McQueen	1982 -
Targona	S	Cal 29	1985 -
Tarka	S	Cat 27	1976 - 83
Tarka	S	Paceship 32	1984 -
Tarun	S	Conway Crosling 36	1978 -
Taseko II	S	Cooper 416	1981.
Taseko II	S	42' Sloop	1983 -
Taseko III	S	Custom	1982 -
Tatsu	S	Dragon	1972., 78 -
Tatusa	S	30' Catalina	
Taurus	S	26' Yamaha	
Tazi	P	25' Sport Fish.	1979 - 82
T B A	P		1977 - 78
T Boy Too	P		1968 - 72
TBN	S	35' Sloop	1975.
Te Amo	P		
Te Amo II	P		1975 - 79

Yacht Name	Power Sail	Description	Year Book(s) Listing
Teelee	P		1958, 60 - 63, 1965 - 72
Teesa	S	Mart. 24	1979 - 84
Tego	P	28' Crown	1977 -
Tehani	P		1962 - 74
Teika	S	North Sea 34	1982 -
Tekilome	S	47' Ketch	1969 - 71
Tekilome	S	37' Ketch	1971 - 82
Tekilome	S	38' Atkin Ketch	1984 -
Temeka	P		1977 - 78
Temeraire IV	P	42' Grand Banks	1985 -
Tempest II	P		1947 - 71
Temptation	S	Ericson 29	1974 - 78, 80.
Temptation	S	San Juan 28	1980 - 82
Tenakee	P	36' Grand Banks	1975 -
Tern	S		1975.
Tern III	P		1975 - 82
Terna	S	C&C 35	1978 -
Terna III	S	C&C 39	1983 -
Terrestrial New World Cuckoo Two	S	Soling	1972 - 81, 83 -
Tesoro	P	40'	1981 -
The Breakaway	P	34' Silverton	1982.
The Collector	P	32'	1978 -
The Communicator	P		1985 -
The Cottage	P		1973 - 82
The Eagle II	P		1975., 77.
The Enchanted Owl	S	Martin 32	1980.
The Enchanted Owl	S	Martin 242	1983 -
The Fonz	P		1977 - 79
The Godfather	P	24' Chris Craft	1981 - 82
The Golden Lamb	S		1984 -
The Hermitage	P	37' Canoe Cove	1975 - 82
The Hermitage	S	Maple Leaf 42	1983 -
The Horizon Job	S	505	1979.
The Loafer III	P		1975 - 76
The Lotus Eater	S	Dragon	1975 - 77
The Lotus Eater	S	San Juan 24	1978 - 79
The Manor	P		1976 - 77
The Organizer	P	26' Hourston	1981 -
The Pearce Arrow	S	Ganbare 35	1975 -
The Puss	P		1975 - 78
The Puss Too	P		1979.
The Quest	S	12 Metre Sloop	1981 - 82
The Quick Brown Fox	S	Kirby 30	1981 -
The Raed Leopard	S	Martin 24	1978 - 79, 82.
The Red Baron	S	Laser	1982.
The Right Stuff	S	Martin 24'	1985 -

Yacht Name	Power Sail	Description	Year Book(s) Listing
The Roving Eye	S	Cal 28	1969 - 76
See Roving Eye			
The Royal Wm.	P		1980 - 81
The Seacliff	P	18' Hourston	
The Snow Goose	S	66' Sceptre	1981 - 83
The Snow Goose	S	36' Sceptre	1984.
The Spirit	S	Cat 27	1976 - 78
Think Snow	S	Force 5	1977 - 80
This Summer	P		1983 -
Thistle	S	Gramp. 26	1980 -
Thoreen	S	T-Bird	1981 -
Three Seasons	S		1985 -
Three Seasons	P		
Thunder	P	52' Cruiser	1985 -
Thunder	S		1983 -
Thunderbird	P		1959 - 75
Thunderbird	P	43' Cruiser	1985 -
Thunderbird IV	P		1972 - 73
Thunder Chicken	S	Thunderbird	1976, 78, 79 - 82
Thundermug	S	T-Bird	1981 -
Tichuk	P		1973 - 75
Tide N' Knots	P		1976 - 77
Tiddy Dol	S	25'	1983 -
Tif & Jay	P	2550 Sunbridge	1983 -
Tikh Hai	P		1969 - 72
Tiki III	S	T-Bird	1964 - 71
Tillicum	P	30' Tollycraft	1982 - 84
Tillicum	P	40' Tollycraft	1985 -
Ti-Mu	P		1969 - 71
Timalu	P	33' Shepard Cabin Cruiser	1980 -
Timani Lu	P	52' Grenfell	1973 -
Time Out	S	C&C 30	1979 - 83
Time Out	S	Niagara 35	1984 -
Tin Lizzy	P	37' Alwest	1981.
Tina	P		1972 - 73
Tine	S	Snipe	1967 - 71
Tinker Toy	P		1970 - 75
Tinker Toy	S	Star	1979 -
Tinker Toy II	P		1976 - 81
Tiny Bubbles	S	T-Bird	1969 - 71
Tiny Bubbles	P		1971 - 73
Tiny Bubbles	S	Ericson 32	1975 - 78
Tiny Bubbles II	P		1974.
Tir Na Nog	S	30' Yamaha	1982 -
Ti-Sie II	P		1978 - 80
Titanic	S	505	1973 - 75
Tjep	S	Dragon	1956 - 72, 74.
Tjepat	S	Fireball	1983 -



Yacht Name	Power Sail	Description	Year Book(s) Listing
Tlee Ha	P		1971 - 78
Tlee-Haw	P		1981.
Tobias	S	Sabot	1967 - 71
Toby	S	Sabot	1971 - 73
Toleia	P	36' Trojan	1982 - 84
Tolowa	S	T-Bird	1970 - 74
Tom Boy	S	34' Sloop	1975.
Tom Jones	S	Geary	1970 - 71
Tomatoe	S	Misc.	1977, 79 - 80
Tomboy	S	34' Sloop	1948 - 72
Tom's Folly	P		1970 - 73
Tondelayo	S	Crown 28	1980 -
Tonkawa	P	24' Sea Ray	1972 -
Too and Fro	P	25'	1982.
Top Flight	P	24'	1976 -
Top Hat	P	28' Western Commander	1981 - 82
Tora-Tora	S	Thunderbird	1975 - 80
Toroa	S	Cat. 27	1977 -
Tortuga	S	Cal 29	1975 - 78
Totem	S	Star	1964 - 75
Totem II	P		1972 - 79
Totem Chief	P	40' Tollycraft	1978 - 81
Totem Chief	P	45' Chris Craft	1982 -
Totem Too	P	24'	1983 -
Touche	P	30' Express cruiser	1981 - 83
Touche	P	32' Cruiser	1984 -
Touche II	S	Fly, Dutche	1966 - 71
Tovarich	P	37' Alcan	1964 -
Tradewinds III	P	36'	1975 -
Tranquility	S	Crown 34	1981 -
Traph	P		1978 - 80
Tremalka Jay	S	38' Cutter	1980.
Tremari	P		1975 - 78
Tremari III	P		1979 - 80
Trevada	P		1980.
Treveda	S	Roedde 34	1952 - 84
Tri Max	P		1974.
Triad	S	Cal 34	1979 - 83
Tribute	S	Ericson 35	1980.
Tribute	P	35' Trawler	1983 -
Tricia	S	36' Sloop	1958 - 73
Tricia	S	Maple Leaf 42	1974 -
Trim	S	6 Metre	1964 - 66
Trimaran	P		1970 - 74
Trincomali	S	27' C&C	1985 -
Tringa	S	30' Sloop	1979 -
Trinity III	S	36' CS	1985 -
Trinket	P	31' Uniflite cabin Cruiser	1981 -
Trinket II	P	41' Canoe Cove	

Yacht Name	Power Sail	Description	Year Book(s) Listing
Trinorca	S	Islander 30	1978 - 80
Tristeza	S	41' Ketch	1979.
Tristram	S	Cor 30	1977 -
Triton	P		1969 - 74
Triton	P	28' Fiberform	1976 - 85
Triton's Nymph	P	24' Sea Ray	1978 -
Trofast	S	42'	1977 - 80
Trofast	S	65' Ketch	1981 -
Trombones	S	Soling	1975 - 76
Tropic Bird	S	42' Sloop	1983 -
Tru Luv	P		
Truant	P		1958 -
Trucilla	P		1979 - 80
Trucilla	P		1984 -
Trumpeter of Jericho	S	Swan 38	1975 - 78
Tryste II	S	40 Tri	1975.
T-Sin	P		1972.
Tsona	P		1967 - 74
Tsoona	S	Cal 20	1976.
Tsunami	S	Cal 2-27	1978 -
Tsunami	S	Cooper 35'	
Tuaq	P	31' Uniflite	1982.
Tuaq	S	SJ 24	1979 - 84
Tuffin	S	27' Catalina	1981.
Tui	S	Newport 28	1976 - 78
Tumanos	P		1979 - 82
Tungar	P	48' Gulf Commander	1983 -
Turkey Farm	S	Soling	1978.
Tweety	S	T-Bird	1981 -
Two Rivers Too	P		1974 - 80
Tyche	S	Swift 24	1974 -
Tyke	P		1979.
Tyke	P	20'	1981 -
Tzinquaw	P	30' Monk	1968 -
Ubique I	P		1938 - 40, 46 - 72, 1974, 81.
Ultimatum	S	Vik 34	1976 -
Unicorn	S	25'	1972.
Unicorn	S	Martin 29	1973.
Unicorn II	S	Martin 29	1974 - 77
Unicorn IV	P	27' Concorde	1981.
Unicorn V	P	36' Grand Banks	1982.
Uni-Corn	P	31' Uniflite	1981 - 82
Urchin	P	18' Donzi	1976 -
Ursa Minor	P		1968 - 71
Vagary	S	Vega 27	1972 - 77
Vagrant	S	37' Pilot House Sloop	1982 -
Valeda	S	Spencer 35	1975 - 77

Yacht Name	Power Sail	Description	Year Book(s) Listing
Valhalla II	S	29' Cove Sloop	1972 - 75
Valiant V	P		1968 - 72
Valioso	P	30'	1976 -
Valkyrie II	S	Cal 28	1975.
Valkyrie IV	S	Ontario 32	1976 - 83., 85 -
Vanamed	S		1974.
Vanara	S		1983 -
Vandal	P		1967 - 71
Vandal	P	59	1978 -
Vandal Too	P		1972 - 74
Vaneco	P		1972.
Vanora	S	32'	1977 - 81
Vanora	S	Disc. 32'	
Vantage	S	Peterson 1-Ton 35'	1982 -
Vaya	P	26'	1980.
Vendredi	P	42' Grand Banks	1981 -
Venture	P	27.5' Bayliner	1982 - 84
Verano	S	C&C 27'	1978 - 80
Verano	S	Niagara 31	1982 -
Veri Best I	P	24'	1975 -
Vestri	P	34' CHB	1978 -
Via Mar	P	53' M.Y.	1980.
Vigilant	S	Dragon	1983 -
Virginia Marie	P	60' Cruiser	1973 -
Virtue Rewarded	S	Rawson 36	1982.
Vita Bella	P		1955 - 58, 70 - 71
Vita Bella I	P		1972, 74 - 75
Vita Bella II	P		1959 - 69
Vita Bella III	P		1970, 79 -
Vita Bella IV	P		1971 - 78
Vitamen Sea	S	Cal 29	1977 - 80
Vivacious	S	San Juan 24	1977 - 80
Vivara	S	Cal 20	1977 - 80
Vivo	S	Lightning	1982 -
Vogad	S	34' Spencer	1971 -
Volantis	P	23' Uniflite	1981 - 82
Volantis	S	42' M.L.	1983 -
Voyageur	P	25' Bayliner Express	1981 - 83
Wahkeena	P		1968 - 79
Wainani	P		1968 - 74
Wainani	P	35' Chris Craft	1977 -
Wakala	P		1969 - 78
Walhachin	S	47' Olympic Ketch	1977 - 80, 83 -
Walronda	P	60'	
Wanderer	P	62'	1963 - 72, 74 -
Wardhaven	P	45' Monk	1966 - 67, 69 - 84
Wasp	S	D12	1972 - 73
Wasp	S	San Juan 24	1976 - 80

Yacht Name	Power Sail	Description	Year Book(s) Listing
Water Dancer	P	36' Cruiser	1966 -
Watership One	S	Ericson 27	1980.
Watersmeet	S	Islander 36	1979 - 81., 83 -
Wave Skimmer	P		1977.
Wavelength	S	Laser	1979 - 82
Waymark	P		1978 - 82
Weatherly	P	66'	1983 - 84
Wee II	S	Flying Junior	1970 - 73
Wee Chapy	P		1964 - 78
Wee Chapy	P	19' Runabout	1980 -
Weezy II	P		1976 - 77
Wencaria	S	22'	1972 - 75
West Wind II	S	H 28	1973 - 75
Westbury	P	26'	1981 -
Westerly Twenty Five	S	25'	1967 - 71
Westward Trader	P	36' Grand Mariner	1983 - 84
Wey Side	S	San Juan 24	1975 -
Whannalhaya	P		1977 - 78
Whereaway	S	37' Sloop	1958 - 72, 74.
Whiffin	S	Martin 242	1983 -
Whimsy II	S	40' Northstar	1976. 1979 -
Whirlwind	S	Haida 26	1972 - 78
Whiskey-Jack	S	Cal 20	1975, 78 - 79
Whistling Swan	S	C&C 35'	1985 -
Whisper	S	19'	1968 - 73
Whisper	S		1974 - 75
Whisper	S	San Juan 21	1977 - 78
White Cloud	S	46' Ketch	1978 - 80., 83 -
White Hall	S	Lightning	1982.
White Label	P		1976 - 81
White Lightning	S		1982.
White Tiger	P	40' Trawler	1982 -
White Whale	S	30'	1973 - 77
White Wings	P		1972 - 76
Whitebird	S	Crown 34	1979 - 84
Why Not	S		1977 - 78
Wickaninnish	S	30' Sloop	1971 - 74
Wight Hawk	P	41' President	1984 -
Wild is the Wind	S	Fireball	1979 - 80
Wild Fire	S	C&C 37	1983 -
Wild One	P		1966 - 72
Wild One	P	17'	1981 -
Willie	P		1975.
Wimbrel	P		1975 - 76
Wimbrel	S	Crown 28	1977 - 81
Wimbrel II	S	Viking 33	1982 - 84
Wind Song	S	27 Catalina	1981 -
Wild Dance	S	32' Sloop	1972 - 78

Yacht Name	Power Sail	Description	Year Book(s) Listing
Wind Fever	S		1982.
Wind Lass	S	48'	1972 - 73
Wind Rush	S	30' Ketch	1973 - 76
Wind Toy	S	C&C 38	1978 - 80 -
Windbird	S	42' Cutter	1983 -
Wind-Blossom	S	Rawson 30' Sloop	1972 -
Windborne	S	30' Sloop	1969 - 72
Windfall Profit	S	Star	1983 -
Windflight	S	Reliance 37	1982 -
Windjammer	S	Laser	1979 - 80., 83 -
Windor	S	Star	1938 - 40, 46 - 49, 1951 - 53, 61 - 73
Windpiper	S	Crown 28	1981 -
Windrose	S	35'	1977.
Windrose	S	Nicholson 35	1980 -
Windrush III	S	Whitby 42	1982.
Windshadow	S	Faar 38	1982 -
Windshadow	S	Catalina 27	1983 -
Windsong VI	S		1974.
Windsong VI	S	Alberg 30	1982 - 84
Windsurfer II	S	Cat 27	1977 - 80
Windwalker	S	Cal 2-29	
Windy Wendy	S	Ranger 29	1977 - 78
Windy Wendy II	S		1982.
Wine Glass	P		1972.
Wine Glass	P	26'	1979 -
Wingaway	S	41' Sloop	1972 - 76
Wingaway	P	38' Wilbur	1979 - 80
Wingaway II	S	Redline 41	1981 - 82
Wingding	S	Flying Junior	1971 - 73
Wings	S	35' Sloop	1983 -
Wingsong	S	Sloop 30'	1970 - 73
Wingsong VI	S	Alberg 30'	1975 -
Winkin V	S	Ketch 41'	1974 - 78
Winsome III	S	L 36	1959 - 71
Winsome IV	S	Disc. 37	1969 - 77
Winsome X	S	Spencer 1330	1978 -
Winsome Gold	S	Dubois 42	1984 -
Winter Harbour	P	42' Trawler	1983 -
Wishbone	S	25'	1973 - 76
Witch Hazel	S	Cat 27'	1974 - 75
Wolf Dancer	S	27' Sloop	1981.
Woodstock	S	28'	1980.
Woodstock	P	34'	1981.
Woodstock	P	32' Grand Banks	1975 -
Wrangle	S	43' Sloop	1972 - 78
Wun Wey	S	CT 41	1978 -
Wynsonaire	S	34'	1970 - 71



Yacht Name	Power Sail	Description	Year Book(s) Listing
Yaada Too	P		1977 - 80
Yellow Bee	S	Wwd 850	1979 - 84
Yellow Bee Too	P	37' Tolly	1985 -
Yoko-Chan	P		1967 - 80
Yola	S	Cal 2-30	1970 - 80
Yola II	S	Eric 35	1974 - 75
Yowi-Sta	S	Grampian 28	1978 - 79
Yuena Kulayu	S	26' T-Bird	1977 -
Yum Yum	S	Ont. 32	1980., 82 -
Yuonga	S	Snipe	1972 - 73
Zadee II	P		1975 - 80
Zephyr	S	Cooper 35	1982 -
Zest	S	Star	1978 - 83
Zest III	S	34' Sloop	1973 - 78
Zeta	P		1979.
Zeus	S	C&C 38	1976 - 83
Zeus	S	26' Nonsuch	1985 -
Zuna II	S	37'	1969 - 71
52 - Go	S	Hughes 38	1982 - 84
13K 14921	P		1981 -
13K 43598	P		1983 -
13K 64555	P		1981 -
13K 71378	P		1983 -
13K 79636	P		1983 -
13K 90608	P		1983 -



*Bob & Grace Orr's "Owaissa"*

## *Classic (Vintage) Boats*

There appears to be more than one definition for a Classic or Vintage Boat. Listed here are only boats constructed of wood and built before 1938. The following is a partial list of some of the better known vessels that have been listed in the Year Books of the R.V.Y.C. from 1971-1985.

ALIBI WAHOO: Built 1928, L. 58'. Launched as a fast runabout and first registered at Vancouver 1944 as Malibu Wahoo. In 1972 she was bought by Roy Summerfield. She is now out of the Club.

BARDICK: Built 1928, L. 67.5', for A.W. McLimont. She was first christened DEERLEAP and then in succession the names QUENCA, FIFER, GRAMPIAN I, KITTEN F, BARBARA O'H, and finally in 1972, her present name BARDICK. She is now owned by Barry and Dick Hume. Since her launching she has undergone some major structural changes and today is a beautiful and well kept vessel.

BLUE HERON: L.O.A. 47', built 1929. Owned and sailed by Dr. S.L. Williams 1953-1982.

CAPE BEALE: Launched 1925, L. 65', for Edgar Arnet and used as a halibut boat until World War II. In the 1940's it was part of the Royal Canadian Navy. Cape Beale was purchased in 1980 by Gordon Gibson who spent a year and a half converting her into a comfortable pleasure boat. Gordon frequently uses Cape Beale for harbour tours carrying handicapped people or personnel of charitable organizations.

CORSAIR I: Built 1928-29, L. 36' for W.K.E. Sulley and now owned by E. Penn Taylor who keeps her in top condition.

CRESSET: L.O.A. 40', L.W.L. 31', B. 10.3', D. 6.5', Disp. 24,000#, built in 1929. Cresset is an all wood cutter in which Australian Gum Wood, Oak, Yellow Cedar and Teak have been used in appropriate places. She was originally gaff rigged and without an engine. In 1938 or 1939 the rigging was changed to a marconi cutter and after several engine installations now has a Volvo diesel. Cresset has a long history of rac-

ing with many wins and is currently undergoing extensive renovations. See p 47 Annals 1903-1970.

**DOXY:** 26' sloop, built 1937. Doxy is one of the smallest-oldest vintage boats in the Club. She has raced in a number of Little Swiftsures, cruised to Alaska and circum-navigated Vancouver Is. She is owned by John Howard-Gibbon.

**ELEANOR:** Built 1927, 28' runabout. She is constructed of Honduras mahogany and upholstered in leather. Eleanor has been placed in the Victoria Classic Boat show and the 1985 Heritage Boat Festival, winning many awards. She is owned by Robert & Valerie Scott.

**FULMAR:** 8 metre sloop, built 1930. Has been very active and successful in racing from 1954-1980. Owned successively by C. Bayne, Dr. Jack Balmer and Steven & Stephanie Vagvolayi.

**FUSILIER:** Built 1929, L. 46'. Launched as the Jeaneva M. for Philip White she has had only one name change in spite of a succession of owners - Philip White, Col. K.A. McLennan, F.H. Clennedenning, William Crawford, E.F. Riddell, R.J. Dawson, Dr. R.G. Large and the present owner F.S. Clennedenning who keeps her in immaculate condition.

**GALWAY:** Built 1915, L. 50', B. 13'. Original name was Otter Point, later EARLMAR II and finally GALWAY. Club owners have been William Abbott and Dodd Clippingdale. She is now out of the Club.

**GOMETRA:** L.O.A. 43', L.W.L. 28', B. 9.25', D. 6.08'. Gometra was "The Gold Ship" (see p 215, 245, Annals 1903-1970.)

**HAIDA PRINCESS:** ex CEDOLL, built 1925, L. 30' for E.D. Judson. Now owned by Robert K. McLean.

**HAWK:** L.O.A. 47', Bird class sloop built 1929. Owned by Jim McPherson, 1954-1956, Ralph & Bettie Farris, 1956-1971, and Allan Girdler, 1972-1974.

**INVADER:** Built 1935 for James Hoffer. L. 76', B. 12.2'. Later owned by Harry Reifel, then Fred Brown and next by Ronald Graham. Now out of the Club.

**KAY DEE II:** Built by Quent Williams in 1922, L. 36'. This Classic power cruiser was acquired by Jay-Jay Rogers in 1979. She has completely restored this mahogany boat to her original condition. An unusual feature is a forward cockpit - possibly the only one in these waters.

**NORSAL:** Launched 1921 for Norman Lang. Name changed to Maui Lu in 1973 by Gordon Gibson but later reverted to NORSAL. Now out of the Club. (see p 95, Annals 1903-1970)



**RHINEGOLD:** is well described on p. 95 Annals 1903-1970. Built in 1911, L. 35-36', B. 8.6', D. 4.6'. Rhinegold is one of the oldest privately owned power boats in the Pacific Northwest that still survives with both hull and superstructure essentially intact and unchanged. Since 1911 she has been a constant member of the club's flotilla until 1981 when she was bought by Graydon Gibson of Victoria following the death of Col. Colin Ferrie. This long to be remembered boat was in the Club for 70 years - 58 continuous years with one owner, Col. Colin Ferrie.

**SAXONY:** Launched in 1911, L. 68', B. 17' and is now (1985) the oldest boat in the R.V.Y.C. She has had several facelifts but like many people, does not appear to get older, just better. Saxony has been owned by Mr. Benning of Victoria, F.L. Buckley, L.S. Holme, S.L. Howe, W.C. Shelley, Mrs. K.A. Eaton, The Hon. Clarence Wallace, Les Simmers, and currently Andrew Saxton. She has been known successively as Sewickley, Epauline, Walithy and Saxony. She has been in the Club for 72-73 years and today is still a "thing of beauty and a joy to behold."

**SYRENE I:** Built 1921, L. 74'. Brought out from Great Britain by the Rev. John Antle and named JOHN ANTLE. She served as a Columbia Coast Mission Vessel from 1933-1936. Renamed SYRENE I and owned by C.H. Kennedy 1936-1938, W.C. Mainwaring 1938-1942, Dept. of Lands & Forests B.C. 1942-1977. From 1977 she has been owned by Jerry & Barbara Rendell.

**TACONITE:** Built 1930, L. 125', B. 24', D. 10', for W.E. Boeing. Was in the Club for 48 years with the same name and same owner.

**TRUANT:** L. 30', B. 8', D. 3.3'. See p 96 Annals 1903-1970.

**UBIQUE I:** See p 97 Annals 1903-1970.

**WALRONDA:** Built 1912, L. 60', B. 13.08', D. 4.75', for C.R. Gordon. Original name was WALRONDO but was apparently changed by mistake when the registration was transferred from J.B. Woods to C.R. Gordon. The boat was out of the Club for many years but is now back and owned by James & Judith McDonald. See p 86 Annals 1903-1970 for Walronda's role in an act of piracy.

**WANDERER:** ex CORA MAY, built in 1926 from reclaimed wood of the Empress of Japan which was built in 1887. Her first owner was T.E. Leigh. In 1943 she became Army property and in 1947 was bought by Ernie Riddle. Subsequent owners have been Temple H. Wright, J.D. Maitland and currently David Manning. This boat has been R.V.Y.C.'s Flagship on two occasions - 1961 as CORA MAY and 1975 as WANDERER. Under Dave Manning, Wanderer has been prominent

in many predicted log contests and is now frequently seen cruising the waters of British Columbia.

WINDOR: Built in 1931 was one of our better known Star Class boats. It was owned and successfully raced by such members as Harry Wylie, George Parsons, Ken Watt and Bill West.