



**2019 Wednesday Evening Series
May-September, 2019
Royal Vancouver Yacht Club
Vancouver, BC**

**Handicap Divisions
SAILING INSTRUCTIONS**

1 RULES

The regatta will be governed by the rules as defined in *The Racing Rules of Sailing*.

2 NOTICES TO COMPETITORS

Notices to competitors will be posted on the Online Official Notice Board located online at www.royalvan.com/wes.

3 CHANGES TO SAILING INSTRUCTIONS

Any change to the sailing instructions will be posted before 0900 on the day it will take effect, except that any change to the schedule of races will be posted by 2000 on the day before it will take effect.

4 SIGNALS MADE ASHORE

4.1 Signals made ashore will be displayed at RVYC Jericho clubhouse flag mast.

4.2 When flag AP is displayed ashore, '1 minute' is replaced with 'not less than 30 minutes' in the race signal AP.



5 SCHEDULE OF RACES

5.1 Dates of Racing:

May Series No.1	May 1	August Series No.1	July 24
May Series No.2	May 8	August Series No.2	July 31
May Series No.3	May 15	August Series No.3	August 7
May Series No.4	May 22	August Series No.4	August 14
June Series No.1	May 29	September Series No.1	August 21
June Series No.2	June 5	September Series No.2	August 28
June Series No.3	June 12	September Series No.3	September 4
June Series No.4	June 19	September Series No.4	September 11
July Series No.1	June 26		
July Series No.2	July 3		
July Series No.3	July 10		
July Series No.4	July 17		

5.2 The first scheduled warning signal on each day of racing will be made at 1800hrs.

6 CLASS FLAGS

6.1 Class flags will be:

ORC Division 1 – ORC GPH < 640.1	Numeral Pennant 1
PHRF Division 2 – PHRF 100-130	Numeral Pennant 2
PHRF Division 3 – PHRF 131-215	Numeral Pennant 3

6.2 Boats must display a numeral pennant corresponding to their starting pennant conspicuously from the backstay or pushpit.

7 RACING AREAS

Racing will take place in the Southern portion of English Bay in the vicinity of RVYC Jericho.

8 THE COURSES

8.1 The diagrams in Attachment 1 show the courses, including the approximate angles between legs, the order in which marks are to be passed, and the side on which each mark is to be left.

9 MARKS

For Division 1, Mark 1 will be an orange inflatable; for Division 2, Mark 1 will be a yellow inflatable; for Division 3, Mark 1 will be a pink inflatable. Mark S and F will be an orange inflatable.



10 AREAS THAT ARE OBSTRUCTIONS

A line beginning at the northwest corner of the RVYC Jericho breakwater, through a series of orange and white can buoys ending with the north end of the most westerly pier at Jericho Sailing Centre, delimits an obstruction. Boats may not pass south of this line.

11 THE START

11.1 The starting line will be between Mark S and a staff displaying an orange flag on the Race Committee Signal Boat.

11.2 Boats whose warning signal has not been made shall avoid the starting area during the starting sequence for other races.

11.3 A boat starting later than 4 minutes after her starting signal will be scored Did Not Start without a hearing. This changes rules A4 and A5.

11.4 If any part of a boat's hull, crew or equipment is on the course side of the starting line at any time during the two minutes before her starting signal and she is identified, the race committee may attempt to broadcast her sail number on VHF channel 67. Failure to make a broadcast or to time it accurately will not be grounds for a request for redress. This changes rule 62.1(a).

12 CHANGE OF THE WEATHER MARK AFTER THE START

To change the next leg of the course, the race committee will move the original mark (or finishing line) to a new position.

13 THE FINISH

The finishing line will be between Mark F and staff displaying an orange flag on the Race Committee Signal Boat.

14 TIME LIMITS

The time limit shall be 2030 hours or 40 minutes after the first finisher in the division, whichever is earlier.

15 PENALTY SYSTEM

15.1 A boat that may have broken a rule of Part 2, or rule 31 may, after finishing the race, notify the race committee that she accepts a Scoring Penalty calculated as specified in rule 44.3(c). This penalty is not available to a boat that caused injury or serious damage, or gained a significant advantage by her breach: in these circumstances, her penalty is to retire.

15.2 When a Scoring Penalty is accepted, neither the boat nor the protest committee may revoke or remove the penalty. The boat shall not be penalized further in a protest hearing when the protest committee decides that it was appropriate to the facts found and to the applicable rules.

15.3 The boat shall notify the Race Committee that she is accepting a Scoring Penalty by either completing a form available at the RVYC Jericho front desk or completing an online notice by following directions in the Sailing Instructions. The notification of acceptance shall be made before 1400 hrs on the Thursday following the race.



- 15.4 Boats considering accepting the Scoring Penalty may consult the protests that have been filed for the race concerned by going to the 'All classes protest area' located at www.royalvan.com/wes.

16 ARBITRATION

- 16.1 RRS Appendix T will apply.
- 16.2 Any arbitration meetings will take place at the first reasonable time after the incident and prior to the scheduled protest hearing at the RVYC Jericho Clubhouse. Arbitration meeting times will be posted on the online notice board.

17 PROTESTS AND REQUESTS FOR REDRESS

- 17.1 Protests and requests for redress or reopening can be filed online by submitting an online protest form via the link provided at www.royalvan.com/wes.
- 17.3 For all classes, the protest time limit is 2359 hrs on the Wednesday evening of the race.
- 17.4 A Hearing Schedule will be posted no later than 1700 hrs on the Friday following the race to inform competitors of hearings in which they are parties or named as witnesses. Hearings will be held at the RVYC Jericho clubhouse in a designated room at the posted time on the Tuesday following the race. The Hearing Schedule link is available in the 'All classes protest area' located at www.royalvan.com/wes.

18 SCORING

- 18.1 One race is required to be completed to constitute a series.
- 18.2 When four or more races in a series have been completed, a PHRF boat's series score will be the total of her race scores excluding her worst score.
- 18.3 Scoring for each of the five series will be as set out above. Scoring for the overall results of the series will be done similarly. Each series will be scored as one race and the yacht's worst series will be discarded.

19 RACE MANAGEMENT ASSISTANCE

- 19.1 All RVYC registered boats shall provide a crew member to assist in race management activities for one or more race evenings. A sign-up sheet / schedule will be posted online (www.royalvan.com/wes) detailing the date a particular boat is to supply a volunteer. The crew member's responsibilities shall include but are not limited to; performance of Race Committee duties such as timing, recording, signalling; mark setting duties such as positioning marks, and use of a VHF radio for communication. Boats failing to comply with this sailing instruction shall be scored Do Not Exclude ("DNE") for any races held on the



evening they are scheduled to provide a crew member, without a hearing, and being scored DNE will not be grounds for redress.

19.2 RVYC boats failing to schedule a volunteer time shall be fined \$95 (billed to account) per season.

19.3 A boat may apply to the Sailing Director for relief from this requirement for very exceptional reasons.

20 SAFETY REGULATIONS

20.1 A boat that retires from a race shall notify the race committee as soon as possible.

20.2 A boat that sails between a tug and its tow or impedes commercial traffic may be disqualified without a hearing from the race, the series, or the regatta series.

20.3 All crew participating in race management assistance duties according to SI 18 shall wear adequate personal buoyancy at all times while on the water.

21 EQUIPMENT AND MEASUREMENT CHECKS

A boat or equipment may be inspected at any time for compliance with the class rules and sailing instructions. On the water, a boat can be instructed by a race committee equipment inspector or measurer to proceed immediately to a designated area for inspection.

22 TRASH DISPOSAL

Boats shall not put trash in the water.

23 RADIO COMMUNICATION

Except in an emergency, a boat shall neither make radio transmissions while racing nor receive radio communications not available to all boats. This restriction also applies to mobile telephones.

24 PRIZES

24.1 Prizes will be given as follows:

Nightly prizes will be awarded according to the following schedule:

- 1st place will be awarded only if 3 or more boats race.
- 2nd place will be awarded only if 5 or more boats race.
- 3rd place will be awarded only if 7 or more boats race.

Overall series prizes will be awarded according to the following schedule:

- 1st place will be awarded only if 5 or more boats register.
- 2nd place will be awarded only if 7 or more boats register.
- 3rd place will be awarded only if 9 or more boats register.

24.2 Prizes for race winners will be awarded at the end of each race night in the RVYC Star & Dragon lounge on the lower level of the Clubhouse following racing.

24.3 Series awards will be presented at the RVYC Prize giving will be held in November.



25 DISCLAIMER OF LIABILITY

Competitors participate in the regatta entirely at their own risk. See rule 4, Decision to Race. The organizing authority will not accept any liability for material damage or personal injury or death sustained in conjunction with or prior to, during, or after the regatta.

26 INSURANCE

Each participating boat shall be insured with valid third-party liability insurance with a minimum cover of \$1 million per event or the equivalent.

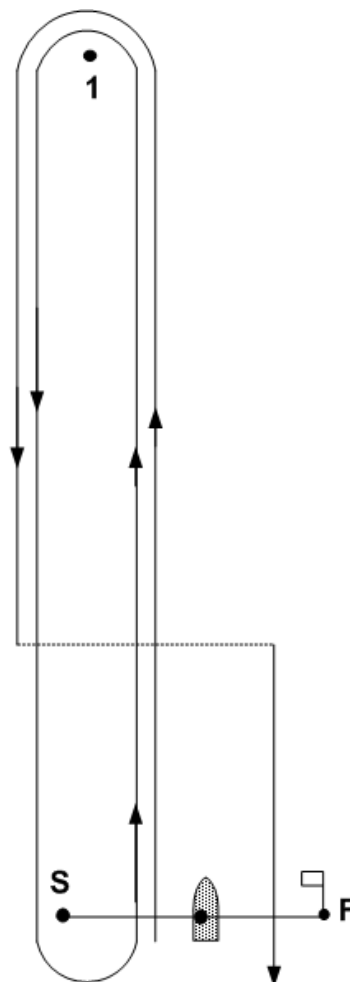
27 MEDIA RIGHTS

By participating in the event competitors automatically grant to the organizing authority and its sponsors the right in perpetuity to make, use and show, from time to time at their discretion, any still or motion pictures and live, taped or filmed television and other reproductions of the athlete during the period of the competition without compensation.



ATTACHMENT 1

COURSE DIAGRAMS



Course: Start – 1 – S – 1 – Finish

If flag R is displayed, the course is:
Start – 1 – S – 1 – S – 1 – Finish



**WHISTLER
BREWING CO.**