

WELCOME TO THE WEBINAR

Thank you for joining us.
We will begin at 3:00 p.m.



ROYAL VANCOUVER YACHT CLUB

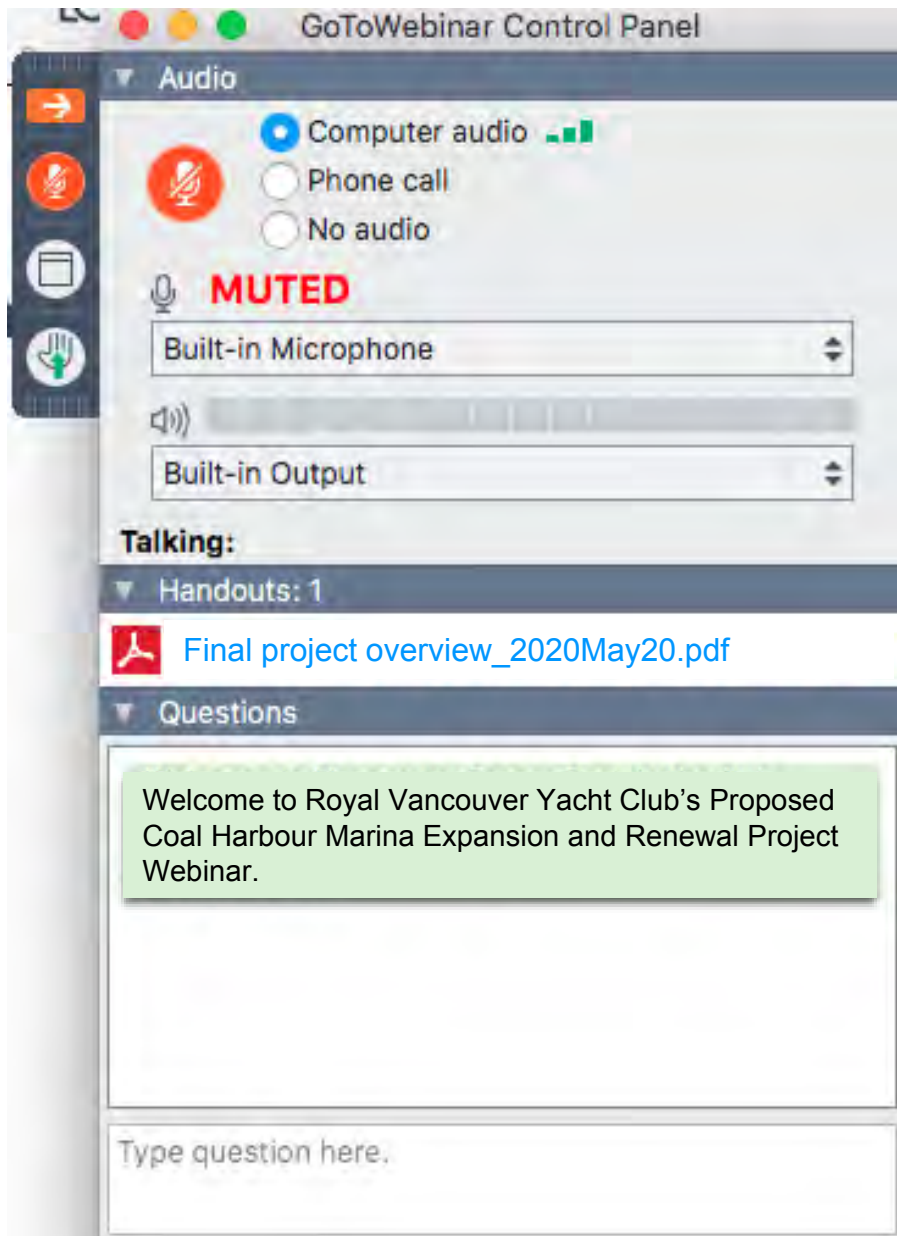
Proposed Coal Harbour Marina Expansion and Renewal Project Webinar

Presented as part of the Vancouver Fraser Port Authority
Project and Environmental Review (Per) Process

Your input is important.

Find out how to participate:
royalvan.com/CHExpansionProject





AGENDA

- Opening remarks & agenda
- Introductions
- PER process and how to participate
- Project overview
- Construction overview
- Technical studies overview
- Questions
- Closing remarks



INTRODUCTIONS

- **Ron Jupp** Royal Vancouver Yacht Club
- **Norm Allyn** CMO Consultants
- **Craig McKeen** Rear Commodore Coal Harbour, Royal Vancouver Yacht Club
- **Russ Tyson** Typlan Planning and Management
- **Chris Barnett** Marine Assets Manager, Royal Vancouver Yacht Club
- **Chris Bishop** Manager, Planning and Development, Vancouver Fraser Port Authority
- **Kate Grossman** Public Engagement Advisor, Vancouver Fraser Port Authority
- **Regan Elley** Planning and Development, Vancouver Fraser Port Authority
- **Pam Ryan** Lucent Quay Consulting



PER PROCESS AND HOW TO PARTICIPATE

- The Royal Vancouver Yacht Club submitted an application to the Vancouver Fraser Port Authority as part of the Project and Environmental Review process
- Public comment period from 2 June to 7 July 2020
- Visit ***royalvan.com/CHExpansionProject*** to:
 - Complete an online feedback form
 - Read the application documents, technical studies and plans
 - Register for a webinar session – 16 June and 24 June
 - Find contact information to provide feedback by email or phone



EXPANSION AND RENEWAL PROJECT

- Royal Vancouver Yacht Club is a non-profit organization
- Operating in Coal Harbour Marina since 1903
- 10 years of planning and technical studies
- This project, in the southern portion of the marina, will:
 - Enhance environmental protection
 - Improve boater safety
 - Address demand for moorage and improve services
 - Help meet goal of highest ranking within Clean Marine BC Program



EXPANSION AND RENEWAL PROJECT



- 47 new moorage slips
- 37 older boat sheds replaced
- Existing 52 boat sheds relocated
- 85 creosote treated wooden piles removed and replaced
- Install new concrete floats and reposition existing floats and fingers
- Upgrade float utilities and safety features

EXPANSION AND RENEWAL PROJECT

Project Timeline

- | | |
|--------|---------------------------------------------|
| 2012 | RVYC Coal Harbour Master Plan |
| 2018 | Meeting with Coal Harbour Marine Users |
| 2018 | PER application submitted |
| 2020 | Amended PER application documents submitted |
| ➔ 2020 | Public Engagement - <i>we are here</i> |
| 2021 | Construction starts |
| 2023 | Construction completed |



MARINA DESIGN



MARINA DESIGN



MARINA DESIGN



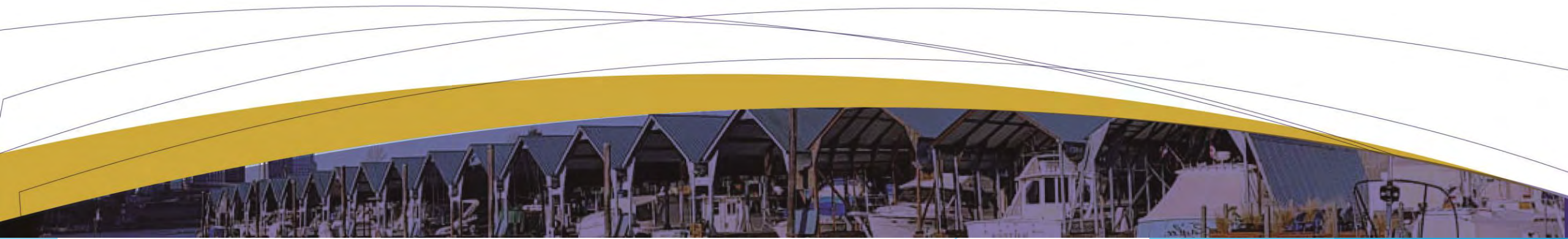
SAFETY

- Project eliminates the need for boats to reverse out of the marina
- Install navigation lights and mirrors on new float
- Develop an education and awareness program for our members
- Installed courtesy signs advising RVYC boaters that rowers maybe in the area
- Advocating for a Coal Harbour multi-use strategy

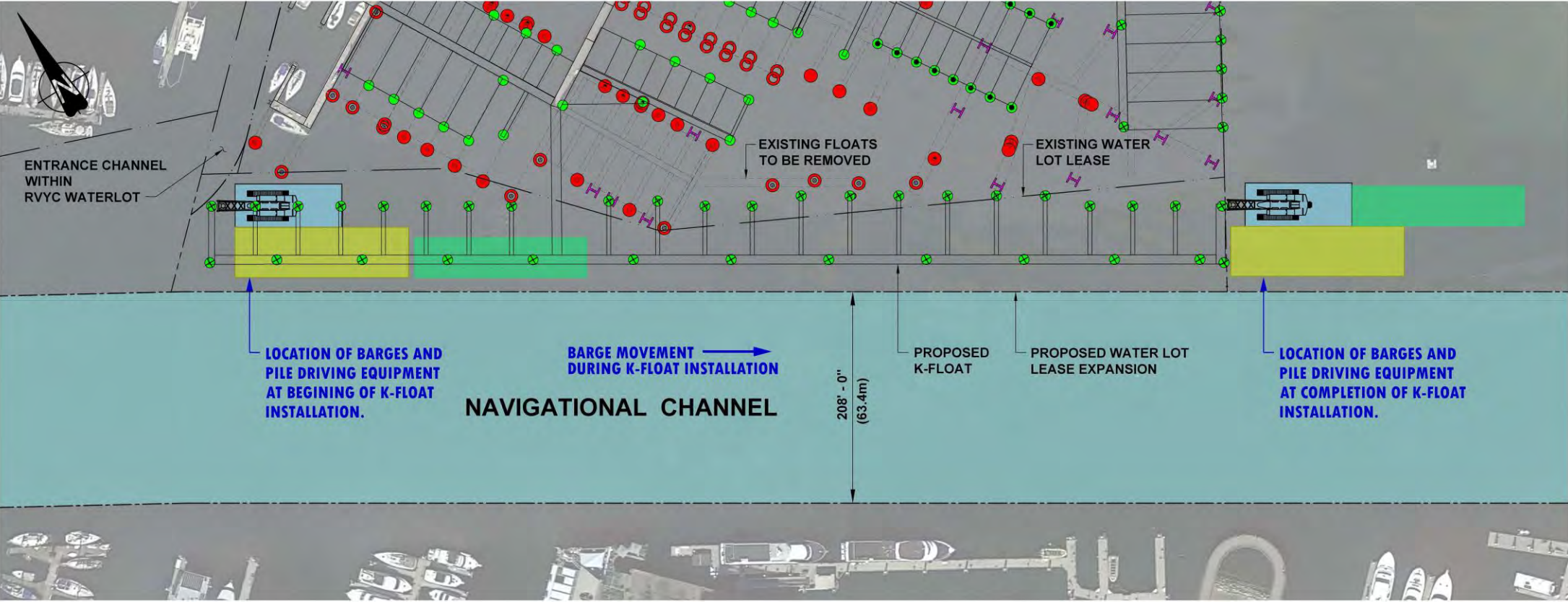


CONSTRUCTION

- Phased approach over a two-year period:
 - **Early 2021** Off-site construction of boat sheds and floats
 - **2021 to 2022 Phases 1 – 4** Construction of K float in proximity to but not with the navigation channel *may have some minor effects on marine users*
 - **2022 to 2023 Phases 5 – 8** Internal marina configuration *will have few effects on marine users*
- Equipment and materials will be transported over water and construction activities will be confined to the marina
- In water works will be conducted in least risk windows for fish and fish habitat
- Work including pile driving will happen Monday to Friday 9:00 a.m. to 5:00 p.m.

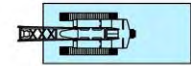


CONSTRUCTION



LEGEND:

- PROPOSED 16"Ø STEEL PIPE PILE LOCATION
- PROPOSED 12.75"Ø STEEL PIPE PILE LOCATION
- PROPOSED 10.75"Ø STEEL PIPE PILE LOCATION
- CREOSOTE TIMBER PILES TO BE REMOVED
- STEEL PIPE PILES TO BE REMOVED
- STEEL H-PILES TO BE REMOVED



42'x105' (13mx32m)
PILE DRIVING BARGE



49'x170' (15mx52m)
STORAGE BARGE



40'x170' (12mx52m)
STORAGE BARGE

K Float Installation

CONSTRUCTION

Pile Replacement and Removal Plan



TECHNICAL STUDIES AND PLANS

PROPOSED COAL HARBOUR MARINA EXPANSION PROJECT

Technical Studies

- [Appendix A - Coal Harbour Marina Expansion Master Plan \(PDF - 4.3 MB\)](#)
- [Appendix B - Coal Harbour Navigation Channel Design \(PDF - 4 MB\)](#)
- [Appendix C - HMCS Discovery Letter of Support \(PDF - 227 KB\)](#)
- [Appendix D - Parks Board Letter re: Boathouse Design \(2011\) \(PDF - 202 KB\)](#)
- [Appendix E - Marina Design \(PDF - 314 KB\)](#)
- [Appendix F - Marine Seismic Refraction Bathymetry and Sub Bottom Acoustic Profiling Report \(PDF - 3.6 MB\)](#)
- [Appendix G - Detailed Construction Staging Memo \(PDF - 4 MB\)](#)
- [Appendix H - Rowing Technical Memo \(PDF - 2.9 MB\)](#)
- [Appendix I - Dock and Float Design \(PDF - 717 KB\)](#)
- [Appendix J - Boat Shed Design \(PDF - 920 KB\)](#)
- [Appendix K - View and Shade Technical Memo \(PDF - 1.9 MB\)](#)
- [Appendix L - Coal Harbour Emergency Response Plan \(PDF - 7 MB\)](#)
- [Appendix M - Fire and Life Safety Plan \(PDF - 150 KB\)](#)
- [Appendix N - Water Supply and Fire Protection Drawings \(PDF - 2.5 MB\)](#)
- [Appendix O - Electrical Distribution Layout Drawings \(PDF - 4.5 MB\)](#)
- [Appendix P - Lighting Plan \(PDF - 237 KB\)](#)
- [Appendix Q - Biophysical Survey of Subtidal Habitat \(PDF 5.5 MB\)](#)
- [Appendix R - CEMP \(Construction Environment Management Plan\) \(PDF - 4.4 MB\)](#)
- [Appendix S - Noise Impact Assessment \(PDF - 888 KB\)](#)

VIEW AND SHADE STUDY

- No increase in the number of boat sheds, no expansion of sheds into new water lease
- Boat sheds consistent with existing sheds in size, height and colour
- Potential view and shade effects assessed
- No effects identified

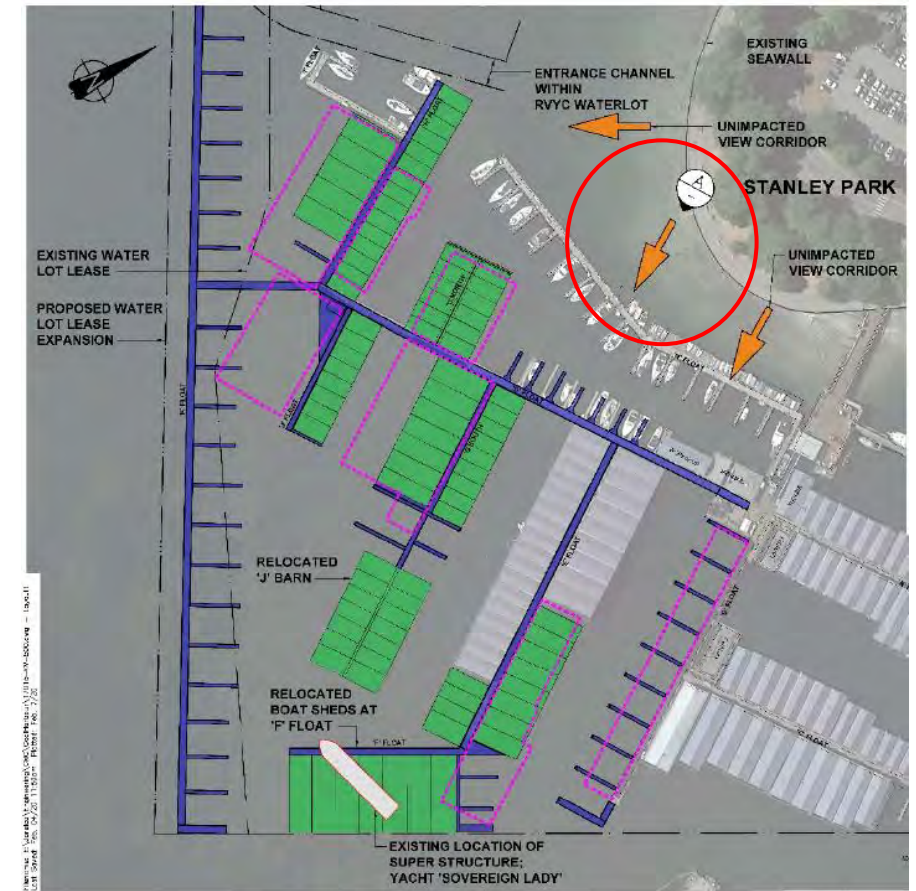
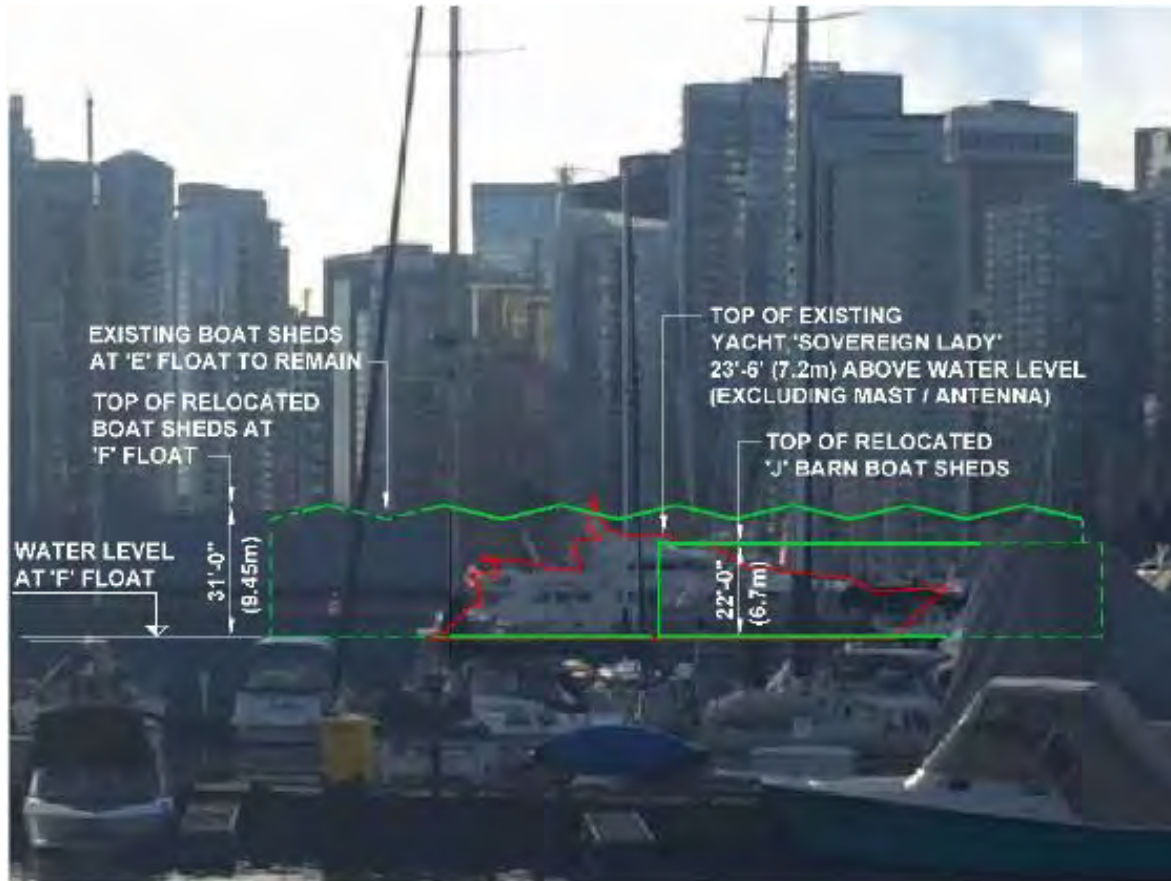


OLD BOAT SHEDS



NEW BOAT SHEDS

VIEW AND SHADE STUDY



VIEW AND SHADE STUDY



VIEW A
501 LOOKING NORTH/EAST
FROM WESTIN BAYSHORE AT THE LIFT RESTAURANT
NOTE: PROPOSED 'K' FLOAT AND BOATS NOT SHOWN

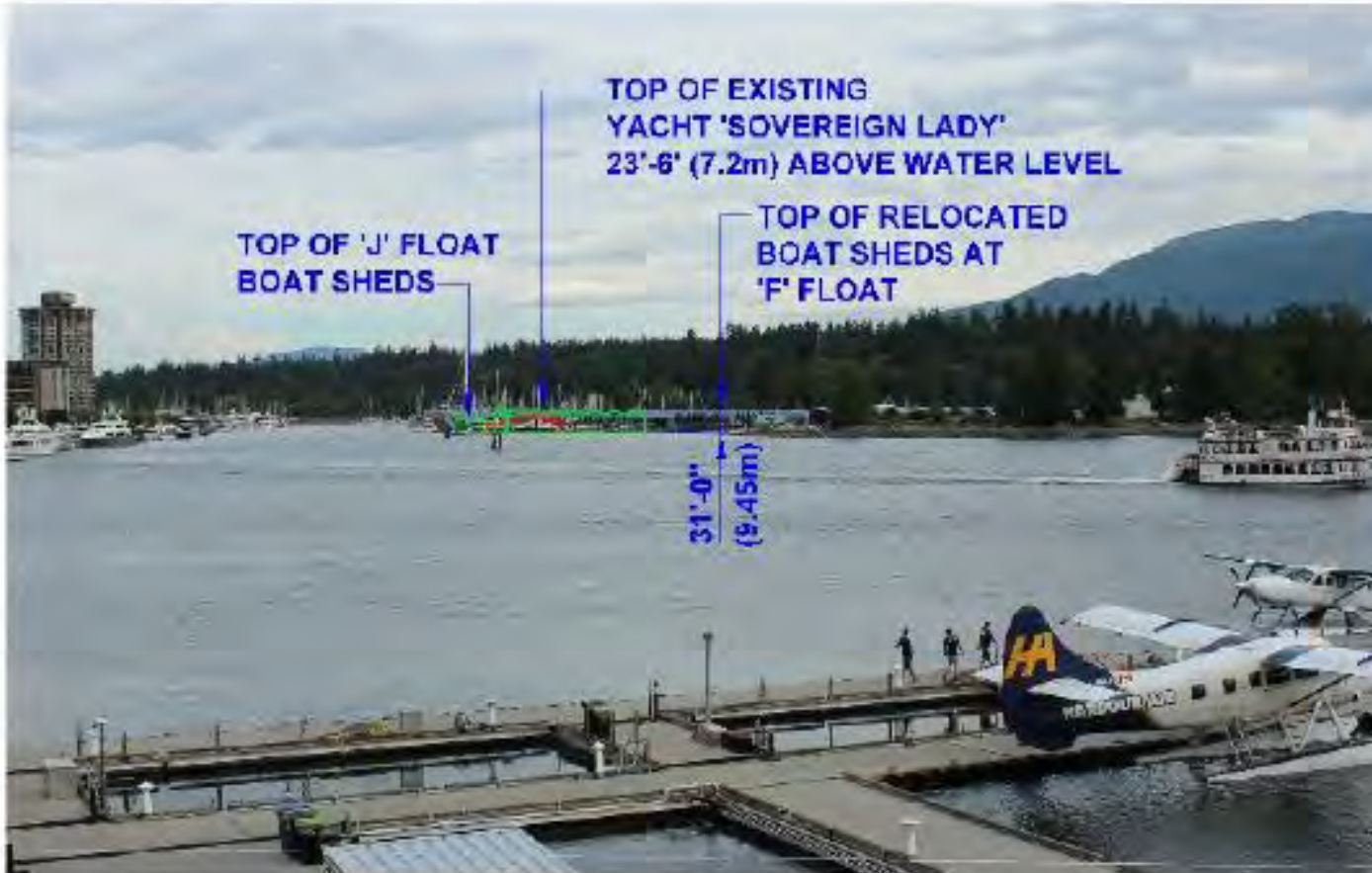
VIEW AND SHADE STUDY



VIEW B 501 LOOKING NORTH/WEST
FROM LIGHTSHED SCULPTURE



VIEW AND SHADE STUDY



VIEW C LOOKING NORTH/WEST
501 FROM SEAWALL AT VANCOUVER HARBOUR WATER AIRPORT



NOISE ASSESSMENT

- Assessment was conducted according to Vancouver Fraser Port Authority requirements
- Noise levels for day to day operations at the project site, after completion, are expected to be consistent with current levels
- Results of assessment confirmed a weighted score of 25.2 so detailed assessment was not required
- Total weighted score of over 30 for activities and processes expected to generate noise would require a detailed noise assessment

LIGHTING PLAN

- Reduces unwanted light spill and other potential effects on adjacent properties and communities
- Conserves electrical energy and reduces unnecessary use of electrical power
- Promotes safety



BIOPHYSICAL SURVEY AND SUBTIDAL HABITAT

- Surveyed for the presence of significant biological resources, including sensitive and rare species or habitats
- Assessed the potential for project to affect aquatic species
- No provincially or federally listed endangered species were observed in the survey area or are expected to occur in the project area
- No sensitive habitat was present within the project site.





THANK YOU!

- > Complete the online survey: surveymonkey.com/r/CHExpansionProject.
You can also download and print a Feedback Form at royalvan.com/CHExpansionProject.
- > Submit your questions, comments or request a follow-up from the project team by phone or email:
Email: CHExpansion@royalvan.com
Telephone: 604.224.4400
- > Please provide your feedback before **Tuesday, July 7, 2020**.
- > Your input is important. Find out how to participate in the consultation process at royalvan.com/CHExpansionProject.
- > For questions regarding the port authority's Project and Environmental Review process, please contact Regan Elley:
Email: regan.elley@portvancouver.com
Telephone: 604.665.9594