

Learn more about safe boating practices in the Port of Vancouver
Port Information Guide at
portvancouver.com/safeboating

Key Contacts

24/7 PORT OPERATIONS CENTRE
Phone: 604.665.9086

VICTORIA TRAFFIC
Phone: 250.363.6611 / Cell: *16 / VHF: 12

MARINE EMERGENCIES
Cell: *16 / VHF: 16 / Phone: 911

03/2018

Where do I?

Anchor

Anchorage in Burrard inlet are for deep-sea vessels only unless in an emergency and then only with port authority permission. Recreational anchorages are available in False Creek and Port Moody.

Safe boating practices

LOOK

Watch out for larger vessels.

Large, deep-sea vessels have limited visibility – don't assume they can see you.

Never cross between a tugboat and its tow.

Tow cables are often submerged and not visible.

LISTEN

Listen for aircraft.

Float planes landing or taking off need plenty of space.

Attend to signals from other vessels.

Five or more short and rapid blasts of a ship's whistle means "danger – stay clear". Monitor VHF 16 and 12.

ACT

Be prepared to move out of the way

Large, deep-sea vessels can't move quickly, especially in narrow channels. Even if you have the right-of-way, you must yield to them.

Report incidents

Contact our Port Operations Centre at 604.665.9086. In an emergency, call 911.

Safe Boating Guide

Burrard Inlet

Waterways don't have traffic signals

Here at Canada's busiest port, there are marine traffic rules to follow and hazards to watch out for. Know the rules of the road for Canada's waterways to keep yourself and others safe.

Know the rules and ensure you comply

Keep your vessel in safe working order – life jackets, radios and navigation lights are required. Drinking alcohol and boating is prohibited. Harbour patrol officers, together with agency partners, conduct routine vessel inspections. Vessels not in compliance may be ticketed or removed at the owners' expense. Learn more about safe boating requirements at www.tc.gc.ca/boatingsafety

Barnet Marine Park

Fishing restrictions

No crabbing or fishing within the deep-sea transit route. Do not impede deep-sea vessels.

Port Moody

Recreational anchorages

Anchor in designated recreational anchorage area. Contact the City of Port Moody for more information or visit portmoody.ca/harbour



VANCOUVER FRASER PORT AUTHORITY

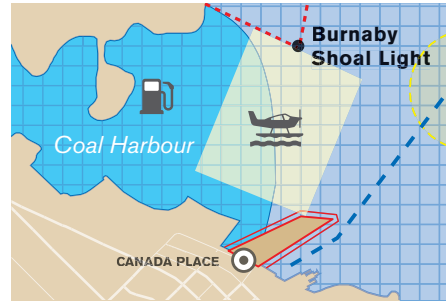
100 The Pointe, 999 Canada Place
Vancouver, B.C. Canada V6C 3T4
T: 604.665.9000
F: 1.866.284.4271
E: info@portvancouver.com
W: portvancouver.com

Safe boating within Burrard Inlet

Not for navigational purposes. Always follow safe boating practices.

First Narrows
Narrow channel, strong currents
Be extremely cautious when transiting through the narrows. Stay to the right of the channel.
Fishing restrictions
No crabbing or fishing within the narrows.
Do not impede the deep-sea transit route.

Coal Harbour
5 knot speed limit
No wake when passing moored seaplanes
Float plane landing area
Keep clear of aircraft landing area
Cruise terminal security zone
Keep clear of Canada Place, at least 50 metres



LEGEND
 Busy port area
No anchoring, crabbing, fishing, sailing, rowing, paddling, jet skiing or towed water sports
 Seabus ferry route
 Canada Place Security zone
Keep clear, at least 50 metres
 Deep-sea transit route
Stay to the right of the channel, do not cross channel in front of deep sea vessels
 5 knot speed zone
 Aircraft operations zone
Keep clear
 Commercial anchorages
Not for recreational use
 Recreational anchorage area
 Marine fuel station
 Boat launch
 Deep-sea terminal
Keep clear
 Narrows boundary area
Be extremely cautious when transiting through the First and Second Narrows

Where do I?

Anchor
Anchor in designated recreational anchorage areas, available in False Creek and Port Moody. Commercial anchorages in Burrard Inlet are for deep-sea vessels only, unless in an emergency and then only with port authority permission.

Discharge
Use pump stations or disposal services for grey and black water. No discharging within 3 nautical miles of shore.

False Creek
Recreational anchorages
Anchor in designated recreational anchorage areas, contact the City of Vancouver for more information or visit vancouver.ca/anchoring

Second Narrows
Narrow channel, strong currents
Be extremely cautious when transiting through the narrows. Stay to the right of the channel.
Fishing restrictions
No crabbing or fishing within the narrows.
Do not impede the deep-sea transit route.